



# POTTLES COTTAGE HENFIELD ROAD COWFOLD

£550,000  
FREEHOLD

- ATTRACTIVE THREE BEDROOM SEMI-DETACHED HOUSE
- MODERN FITTED KITCHEN/DINER WITH DOORS OPENING TO REAR GARDEN
- DOWNSTAIRS SHOWER ROOM
- MODERN FITTED BATHROOM WITH SEPARATE SHOWER
- DRIVEWAY FOR THREE CARS AND SINGLE GARAGE
- SPACIOUS LOUNGE WITH WORKING LOG BURNER FEATURE
- SEPARATE PANTRY/UTILITY ROOM
- MASTER BEDROOM WITH FITTED WARDROBES
- GOOD SIZE REAR GARDEN WITH PATIO AND DECKING AREAS



\*\*Eltons estate agents Ltd have created this floor plan for illustrative purposes only and cannot be held responsible for any discrepancies or errors within. Windows, doors and room dimensions may not be to scale however every care has been taken to provide accurate measurements in writing.\*\*



## Pottles Cottage, Cowfold

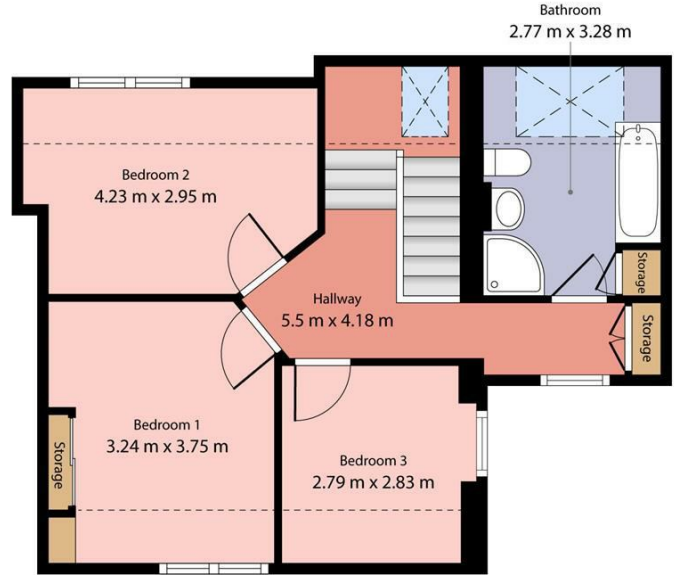
Total floor area - 105.3 sq m (1134 sq ft)  
(excluding garage & storage)

# ELTONS

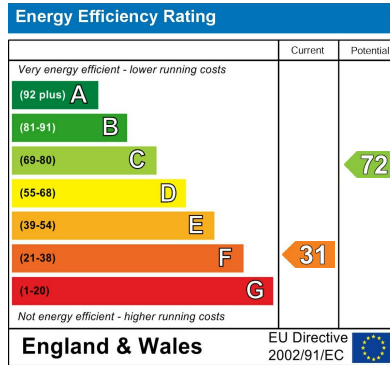
Estate Agents



Ground Floor



1st Floor



Agents Note: Whilst every care has been taken to prepare these particulars, they are for guidance purposes only. All measurements are approximate and are for general guidance purposes only and whilst every care has been taken to ensure their accuracy, they should not be relied upon and potential buyers/tenants are advised to recheck the measurements

**Eltons Estate Agents Horsham** 01403 299 771  
 13 - 15 Queen Street sales@eltons.co.uk  
 Horsham eltons.co.uk  
 West Sussex  
 RH13 5AA

# ELTONS

Estate Agents