



Guide Price
£400,000

Freehold

4x  3x  2x 

**Eton Walk, Folkestone,
Kent, CT19**

OVER 60?

Secure this property
for up to **59% less!**

Wards
Helping you move forwards



Main features

- Large four bedroom end of terraced house
- Open-plan lounge, kitchen and diner
- Modern fitted kitchen with integrated appliances
- Three bathrooms and two en-suite shower rooms
- Walking distance to the central station - Ideal for commuters
- Driveway parking for multiple cars
- Sought after and convenient location

Accommodation

GROUND FLOOR

Entrance Hall
 Dining Area: 14'9 x 8'0 (4.50m x 2.44m)
 Lounge: 14'4 x 13'9 (4.37m x 4.19m)
 Kitchen Area: 19'9 x 6'9 (6.02m x 2.06m)
 Storage Area
 Cloakroom

FIRST FLOOR

Landing
 Bedroom 2: 19'5 x 8'9 (5.92m x 2.67m)
 Bedroom 3: 13'11 x 10'0 (4.24m x 3.05m)
 Bedroom 4: 6'9 x 6'5 (2.06m x 1.96m)
 Bathroom
 En-suite Shower Room

SECOND FLOOR

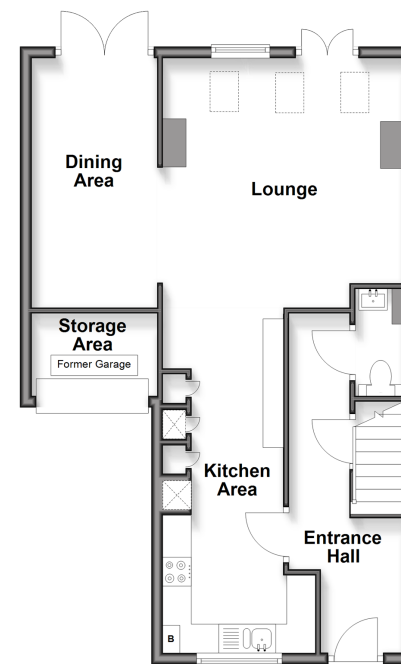
Bedroom 1: 24'3 x 10'0 (7.40m x 3.05m)
 En-suite Shower Room
 Eaves

OUTSIDE

Garage
 Off Road Parking
 Rear Garden

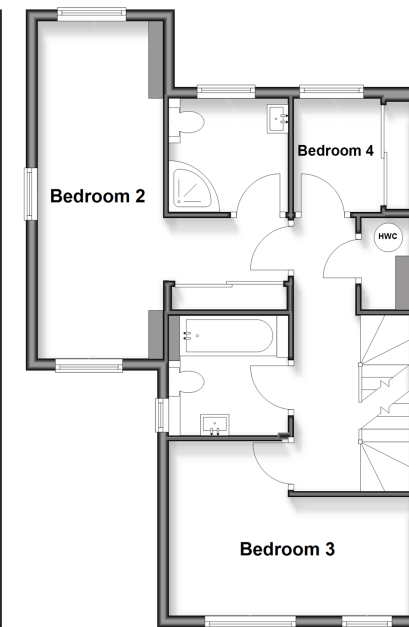
Ground Floor

Approx. 57.1 sq. metres (614.3 sq. feet)



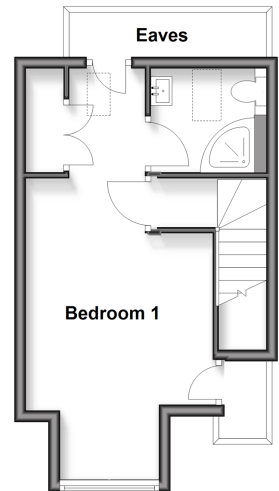
First Floor

Approx. 51.3 sq. metres (551.8 sq. feet)



Second Floor

Approx. 26.1 sq. metres (280.8 sq. feet)



Call Folkestone - 01303 256505 ■ wardsfolkent.co.uk

- Legal advice should be taken to verify fixtures/fittings, planning, alterations and/or lease details
- Through a Homewise Home For Life Plan people aged 60+ can secure this property for up to 59% less, by purchasing a Lifetime Lease

- Appliances & services are untested, dimensions are approximate and floor plans are not to scale



12638558/20260207/LS/LS1