

213 Clevedon Road, Tickenham, Clevedon, BS21 6RX

£1,600 Per Calendar Month

marktempler

RESIDENTIAL LETTINGS





PROPERTY TYPE

House



LOCATION

Tickenham



BEDROOMS

3



RECEPTION ROOMS

3



BATHROOMS

2



WARMTH

Gas central heating



PARKING

Garage and Driveway



OUTSIDE SPACE

Front & Rear



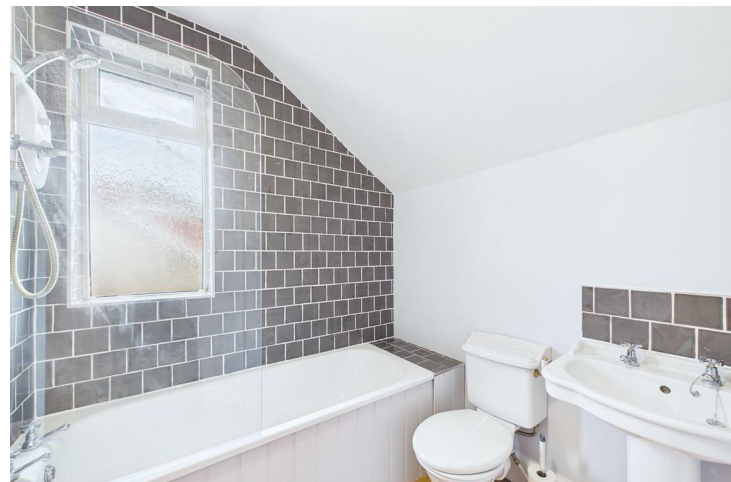
EPC RATING

E



COUNCIL TAX BAND

E



Spacious three-bedroom semi-detached house

Located on sought-after Clevedon Road in the desirable village of Tickenham

Holding deposit - £369.23

Security deposit - £1,846.15

What will it cost to rent this property?

When you submit a completed application form, we will discuss the details with the Landlord. If the Landlord is happy to proceed you will be required to pay:

1. Holding deposit, equivalent to 1 week's rent. This will reserve the property.

Once references are complete, you will be asked to pay:

2. First month's rent
3. Security deposit, equivalent to 5 weeks' rent (for rents under £50,000 per year). This covers damages or defaults on the part of the tenant during the tenancy.



Recently repainted and re-carpeted throughout
Large front driveway with parking for 3-4 cars
Garage with rear access through to the garden
Large main living room with electric fire and large windows allowing plenty of natural light
Second reception room with doors leading to the conservatory

Characterful kitchen with oven & white goods included.

Three double bedrooms upstairs
Principal bedroom with built-in storage and en-suite shower room with WC

Available From:

This property is available to move into from approximately 29th May 2026



Utilities

Mains water and drainage, mains electric supply, gas central heating.
This information has been provided by the Landlord and is correct to the best of our knowledge.

Broadband

Ultrafast broadband available with highest available download speed 1000 Mbps and highest available upload speed 100 Mbps. This information is sourced via checker.ofcom.org.uk, we advise you make your own enquires.

Mobile phone signal

There is limited to likely coverage indoors depending on the provider and likely coverage outdoors with a range of providers. This information is sourced via checker.ofcom.org.uk, we advise you make

For the latest properties and local news follow Mark TEMPLER Residential Lettings on:



