



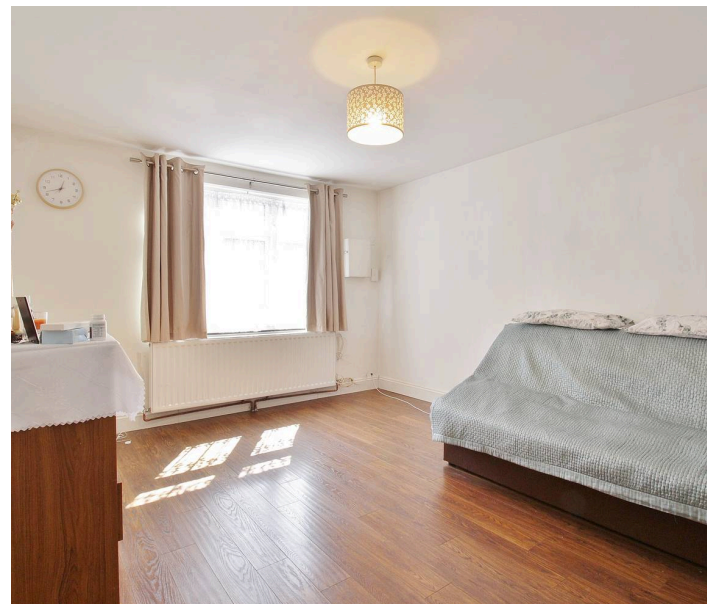
Lodge Close

Isleworth, TW7

£550,000

Situated in a quiet cul-de-sac, this well presented three double bedroom family home is ideally located for access to Syon Lane train station, the picturesque Syon Park, a range of local schools and amenities. Offered with no forward chain, the ground floor accommodation offers a welcoming hallway, a large front reception room, spacious kitchen/diner & downstairs WC. The first floor offers three double bedrooms, each with built in wardrobes, and a family bathroom. Externally the property benefits from a good sized rear garden and private garage. Further benefits include ample internal storage, gas central heating and double glazing throughout.

- No Forward Chain
- Three Double Bedrooms
- Downstairs WC
- Garage
- Quiet Location
- Access to Loft Space
- Ample Internal Storage
- Loft Space



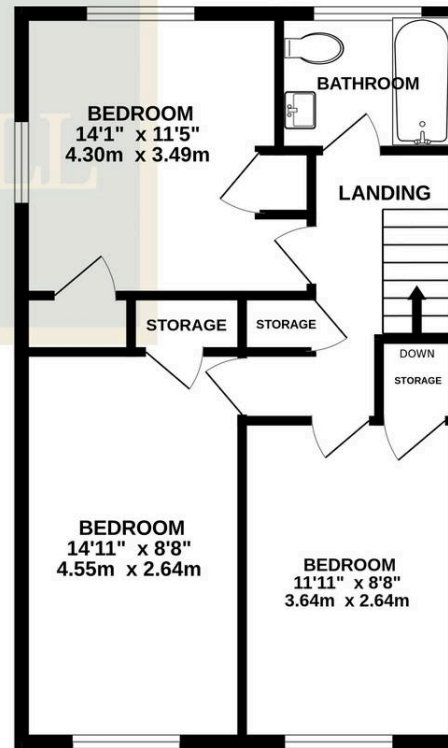
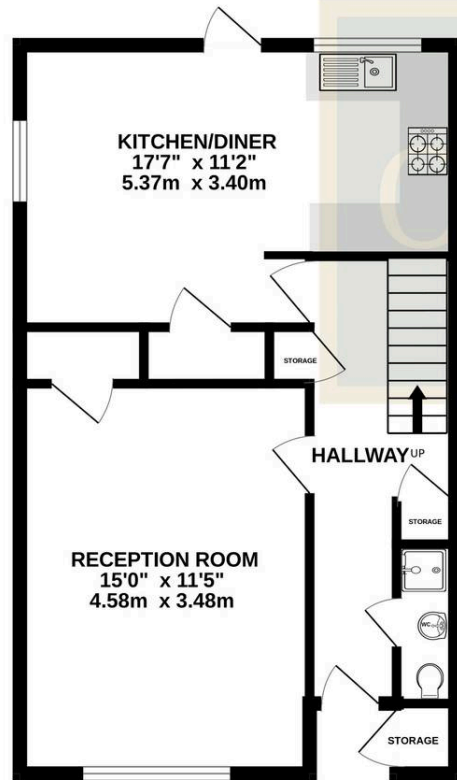
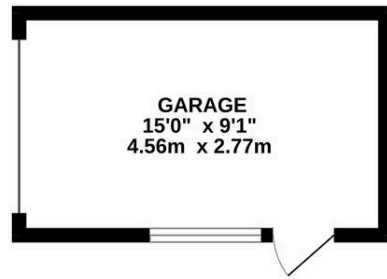
SCAN HERE
FOR
PROPERTY
DETAILS



OAKHILL

GROUND FLOOR

1ST FLOOR



TOTAL FLOOR AREA : 1076sq.ft. (100.0 sq.m.) approx.

Whilst every attempt has been made to ensure the accuracy of the floorplan contained here, measurements of doors, windows, rooms and any other items are approximate and no responsibility is taken for any error, omission or mis-statement. This plan is for illustrative purposes only and should be used as such by any prospective purchaser. The services, systems and appliances shown have not been tested and no guarantee as to their operability or efficiency can be given.
Made with Metropix ©2026.

