

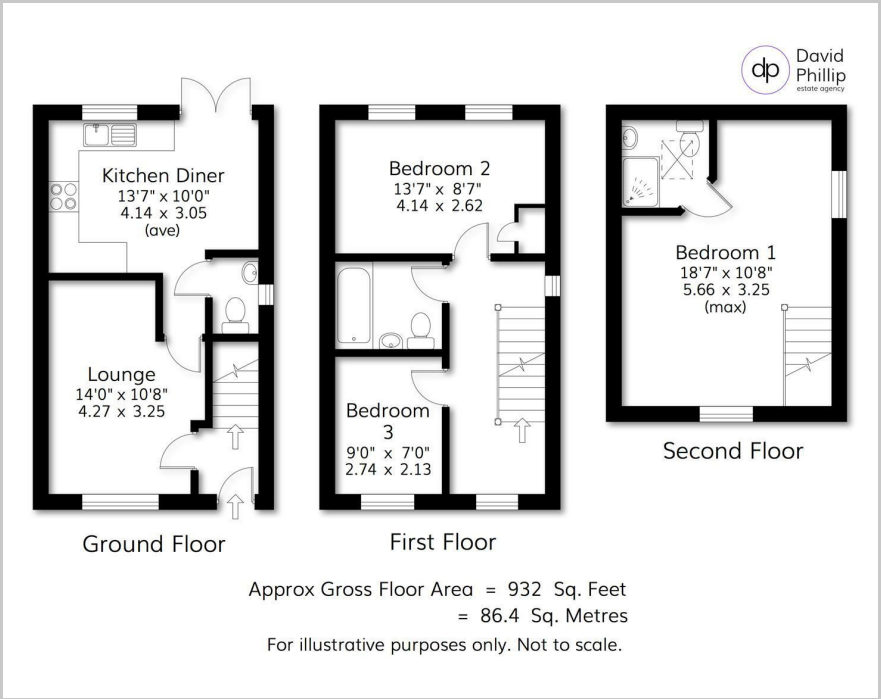


68 Spring Wood Crescent, Leeds, LS16 9GF

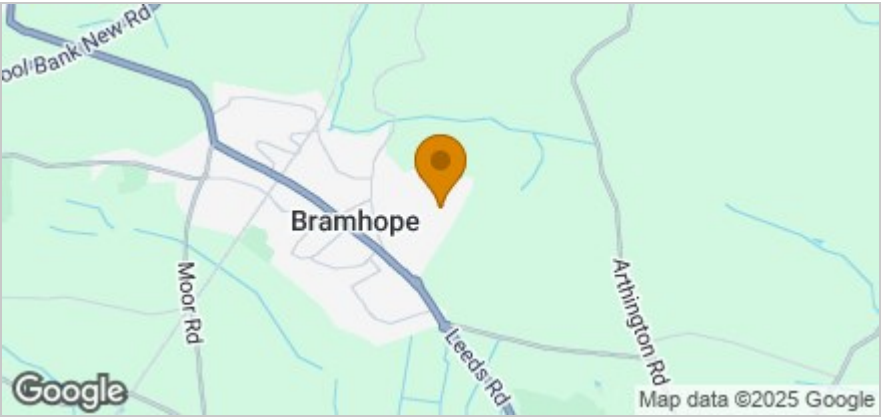
Price Guide £370,000



Floor Plan



Area Map



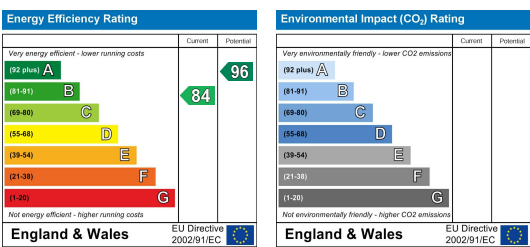
Accommodation

- An Immaculate Recently Built Semi-Detached Family House
- On Three Floors; Three bedrooms, Two Bathrooms, Contemporary Features
- Enclosed Private Southwest Facing Lawned Garden with Patio
- Drive Providing Off Street Parking and Electric Car Charger
- Part of the Highly Popular Miller Homes Development
- Energy Performance Certificate (EPC) Rating B
- Leeds City Council Tax Band D

Viewing

Please contact our David Phillip Estate Agents Office on 01134 676 400 if you wish to arrange a viewing appointment for this property or require further information.

Energy Efficiency Graph



These particulars, whilst believed to be accurate are set out as a general outline only for guidance and do not constitute any part of an offer or contract. Intending purchasers should not rely on them as statements of representation of fact, but must satisfy themselves by inspection or otherwise as to their accuracy. No person in this firm's employment has the authority to make or give any representation or warranty in respect of the property.