



Heath Gardens, TW1

£1,250,000

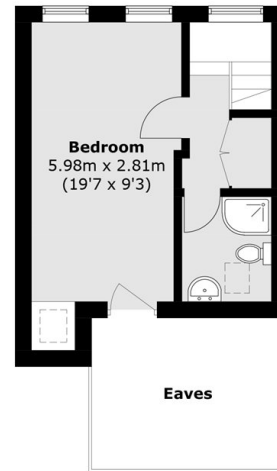
This three bedroom family home is located on a highly sought after road in Twickenham. The property is set over three floors, offers a spacious double reception room, a large well-maintained garden, garage, three good sized bedrooms, with two modern bathrooms. There is potential to extend STPP on the ground floor and no onward chain.

Heath Gardens is a quiet cul-de-sac and is one of Twickenham's premier roads just off Twickenham high street. The property is also close to Twickenham Green and less than a mile to both Twickenham and Strawberry Hill mainline stations.

Features

- Premier Road
- Garage
- Three Double Bedrooms
- No Onward Chain
- Private Garden
- Potential To Extend STPP

Heath Gardens, Twickenham, TW1



Second Floor



Ground Floor

First Floor

Approx Internal Area: 112.5 sq. m (1,210.8 sq. ft)
(Excluding Eaves)

Garage: 17.5 sq. m (188.4 sq. ft)

Total: 130.0 sq. m (1,399.2 sq. ft)