



Asking Price
£270,000
 Freehold

Coleridge Crescent, Goring-By-

- End Terrace House
- Three Bedrooms
- Lounge/Diner
- Chain Free
- Double Glazing
- Freehold
- Council Tax Band - C
- EPC - E

Robert Luff & Co are pleased to present this three bedroom end terrace house located in Goring. Upstairs accommodation comprises two double bedrooms, a further single bedroom and family bathroom. Downstairs living includes a lounge/diner and kitchen. The property offers the opportunity to modernise and make it your own and would suit as the perfect first time buyer home. It is positioned close to local schools, shops and transport links with main line train station a short walk away. Internal viewing advised.

T: 01903 331567 E: goring@robertluff.co.uk
www.robertluff.co.uk

**Robert
 Luff & Co**
 Sales | Lettings | Commercial



Accommodation

Porch 3'7" x 5'6" (1.11 x 1.68)

Entrance Hall

Lounge/Diner 11'4" x 23'3" (max) (3.47 x 7.10 (max))

Kitchen 6'11" x 8'8" (2.12 x 2.65)

First Floor Landing

Bathroom 5'5" x 6'0" (1.67 x 1.83)

Bedroom One 8'5" x 13'4" (max) (2.59 x 4.07 (max))

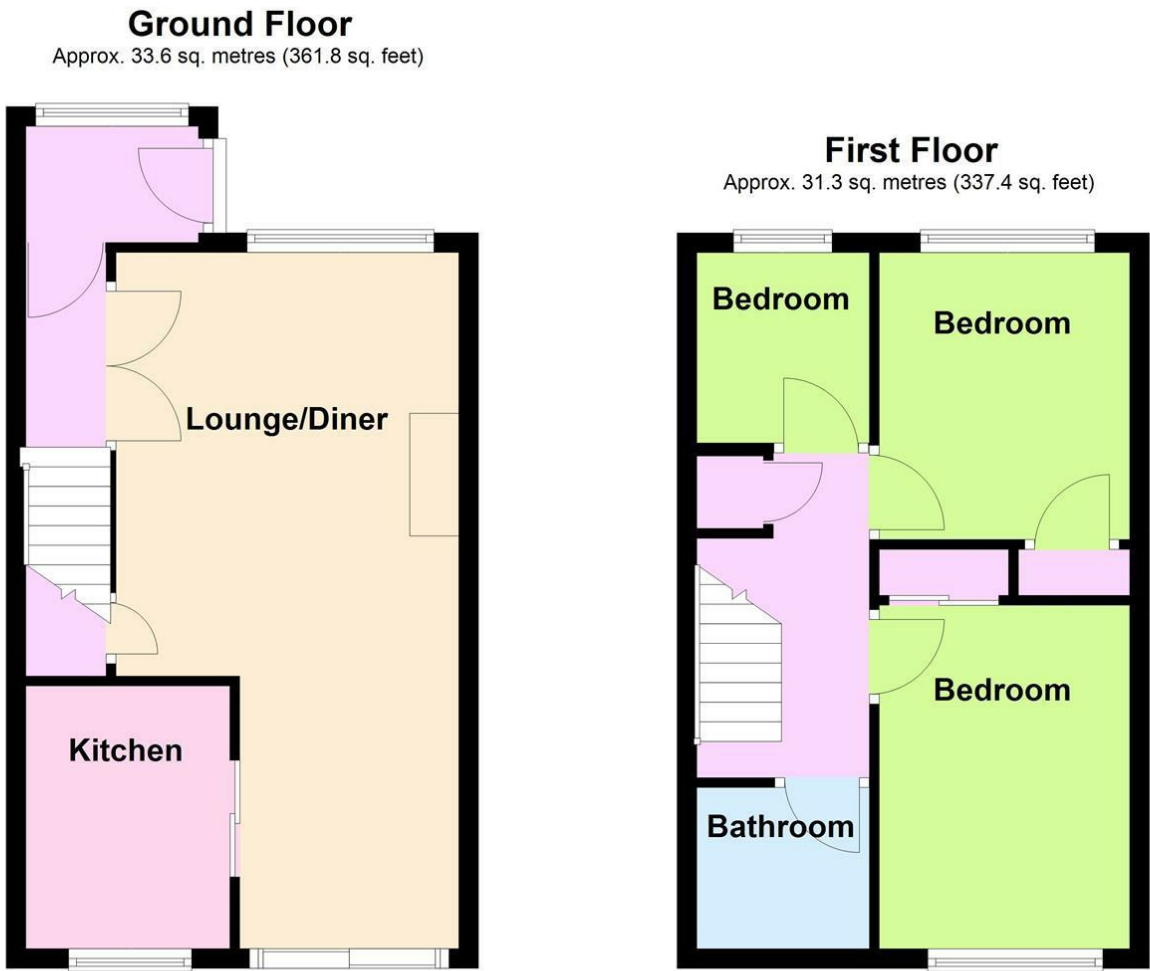
Bedroom Two 8'5" x 11'6" (max) (2.58 x 3.52 (max))

Bedroom Three 6'0" x 6'3" (1.84 x 1.92)

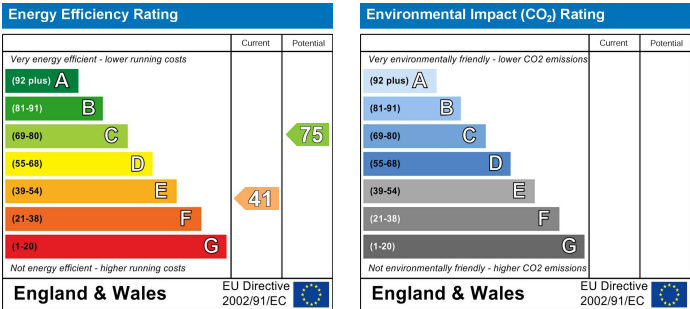
Front Garden

Rear Garden





Total area: approx. 65.0 sq. metres (699.2 sq. feet)



The information provided about this property does not constitute or form any part of an offer or contract, nor may it be regarded as representations. All interested parties must verify accuracy and your solicitor must verify tenure/lease information, fixtures and fittings and, where the property has been extended/converted, planning/building regulation consents. All dimensions are approximate and quoted for guidance only as are floor plans which are not to scale and their accuracy cannot be confirmed. References to appliances and/or services does not imply that they are necessarily in working order or fit for the purpose.