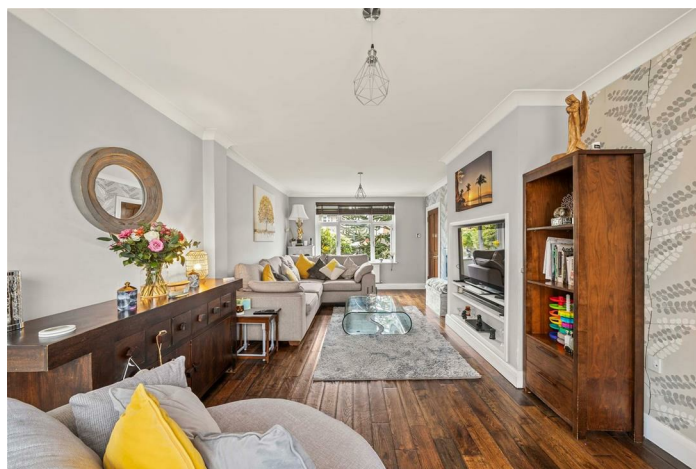


FREEHOLD



House - Semi-Detached (EPC Rating: D)

SOUTH LANE NEW MALDEN KT3 5EN

£725,000

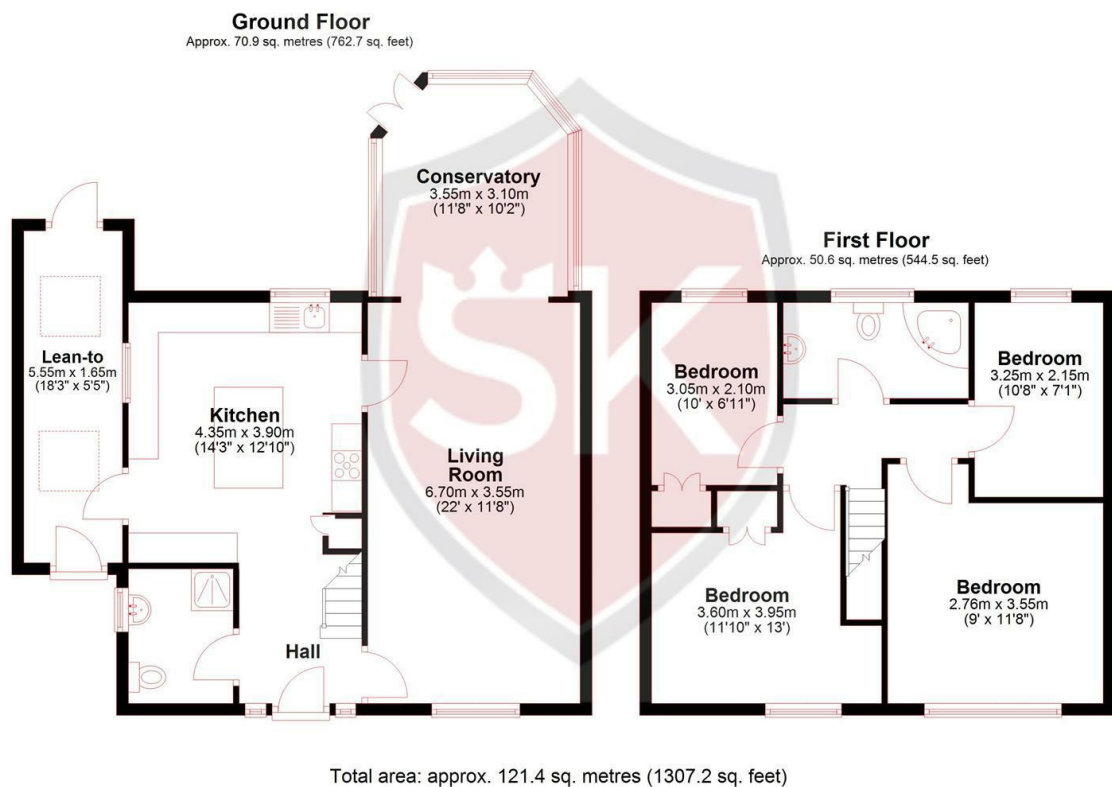


4 Bedroom House - Semi-Detached located in New Malden

This stylish and modern four bedroom family home is presented in excellent condition throughout, offering spacious and well-designed accommodation ideal for contemporary family living. The ground floor features a welcoming entrance hallway with a contemporary shower room/WC, a modern kitchen/breakfast room, and a separate utility room providing excellent day-to-day practicality. A generous through reception room offers flexible living and dining space and flows seamlessly into a bright conservatory, creating an ideal area for relaxing or entertaining while overlooking the rear garden. Upstairs, the property offers four well-proportioned bedrooms and a modern family bathroom, making it perfectly suited to growing families or those needing home office space.

Externally, the home benefits from a large private rear garden, ideal for family life, outdoor entertaining, or simply enjoying some peaceful downtime. Finished to a high standard throughout, the property is ready to move into. The home is conveniently located close to excellent local amenities, well-regarded schools, and a range of shops, cafés, and restaurants. New Malden’s transport links provide easy access into central London and surrounding areas, making this an ideal choice for families and commuters alike.

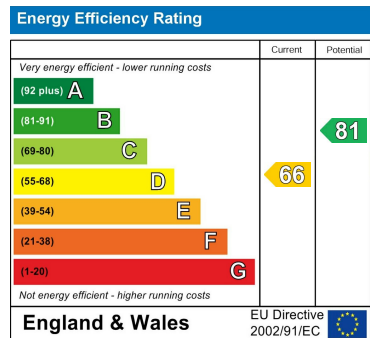
Please note that although there is a driveway the kerb has not been dropped due to the grass verge.



Council Tax Band
E

Energy Performance Graph

Call us on
020 8546 7771
info@saxonkings.co.uk
www.saxonkings.co.uk



Agents Note: Whilst every care has been taken to prepare these particulars, they are for guidance purposes only. All measurements are approximate and are for general guidance purposes only and whilst every care has been taken to ensure their accuracy, they should not be relied upon and potential buyers are advised to recheck the measurements.

