



## Webbs Court, Northwich

£800 PCM

Welcome to this charming property located in the sought-after area of Webbs Court, Northwich. This delightful house boasts a modern design as it is a new build property, offering a fresh and contemporary feel.

Upon entering, you are greeted by a cosy reception room, perfect for relaxing or entertaining guests. The property features two lovely bedrooms, providing ample space for a small family, guests, or even a home office. The single bathroom is conveniently located to serve both bedrooms.

With a total of 657 square feet of living space, this house offers a comfortable and manageable layout for easy living. Built in 2004, this property combines the appeal of a newer build with the charm of a well-established neighbourhood.

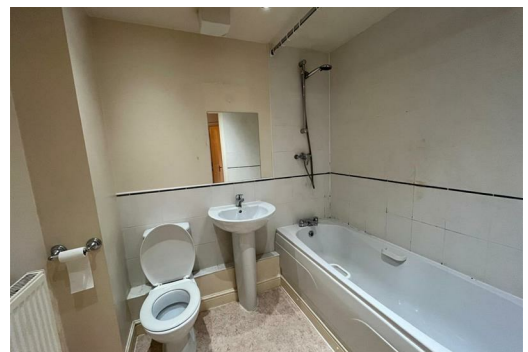
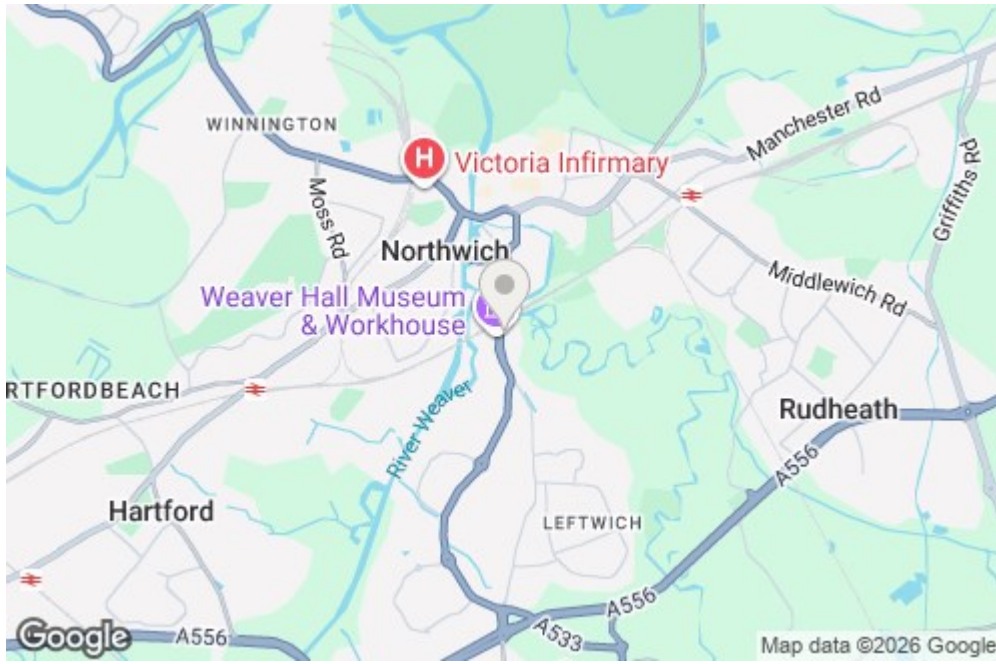
Located in the heart of Northwich, this house provides easy access to local amenities, schools, and transport links, making it an ideal choice for those seeking convenience and a sense of community.

Don't miss the opportunity to make this house your home and enjoy the modern comforts it has to offer. Contact us today to arrange a viewing.

- Deposit: £920
- Council Tax Band: C - Cheshire West

\*Available 10th July 2026\*





Energy Efficiency Rating		Environmental Impact (CO <sub>2</sub> ) Rating	
Current	Potential	Current	Potential
76	78	B	B
<p>Energy Efficiency Rating: 76 (Current), 78 (Potential)</p> <p>Energy Efficiency Rating Legend: A (92-100), B (81-91), C (69-80), D (55-68), E (39-54), F (21-38), G (1-20)</p>		<p>Environmental Impact (CO<sub>2</sub>) Rating: B (Current), B (Potential)</p> <p>Environmental Impact (CO<sub>2</sub>) Rating Legend: A (10-15), B (16-20), C (21-25), D (26-30), E (31-35), F (36-40), G (41-45)</p>	