



Townmead Road, SW6
£900,000

Waterview


A bright and spacious two double bedroom apartment offering a spacious living area with panoramic views from floor to ceiling windows and two private balconies and a secure underground parking space included.

Imperial Wharf is located on The Thames, Between Chelsea and Fulham with a great selection of restaurants and tube station on site.





Accommodation is made up of entrance hall leading to an impressive 28' open plan double reception with large curved panoramic window, space for dining and stylish integrated kitchen with breakfast bar and access to balcony. The large principal bedroom has built-in wardrobes and en-suite. The second double bedroom has access to a second private balcony and there is a further, well appointed family bathroom. There are also partial river views.

The apartment benefits from solid oak flooring throughout. There is an excellent concierge service and a secure underground parking space included in the sale.

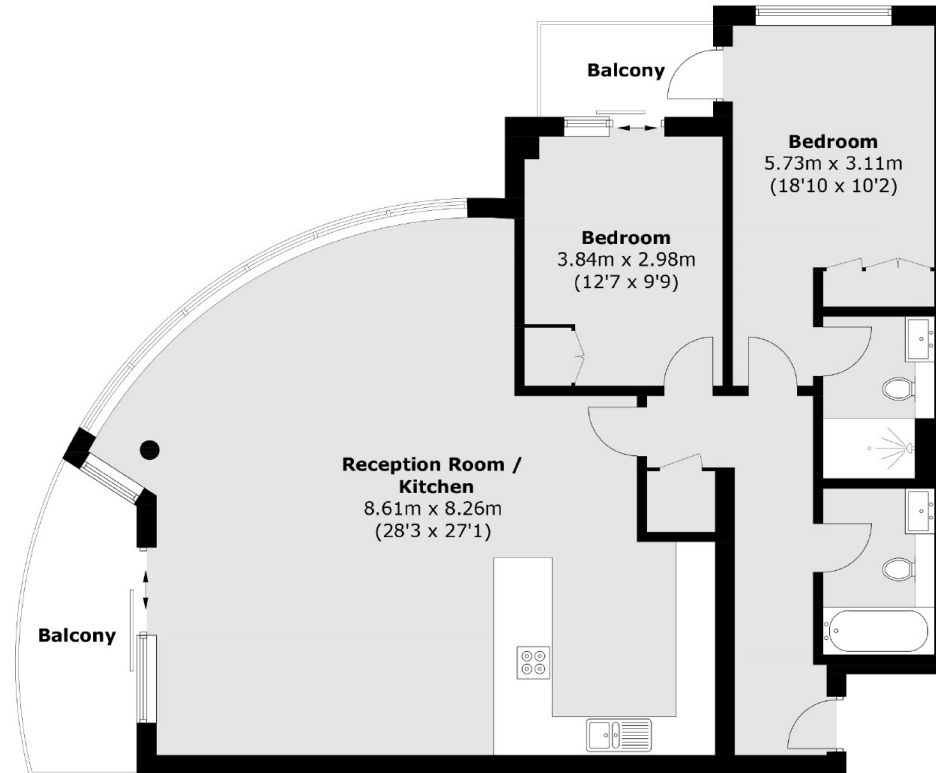
Available with no onward chain.

Features

Beautiful Apartment
1,165 sq ft
Two Double Bedrooms
Two Bathrooms
Private Balconies
No Chain



Townmead Road, Imperial Wharf, SW6



Fifth Floor

Total area (approx.): 108.3 sq. m (1165.7 sq. ft)
Balcony area : 11.3 sq. m (121.6 sq. ft)

Contact

To arrange a viewing call our office on the number below or visit our website.



Energy Rating: B. We aim to make our particulars both accurate and reliable. However they are not guaranteed; nor do they form part of an offer or contract. If you require clarification on any points then please contact us, especially if you're traveling some distance to view. Please note that appliances and heating systems have not been tested and therefore no warranties can be given as to their good working order.

