



High Road, IG1

£1,900 Per calendar month

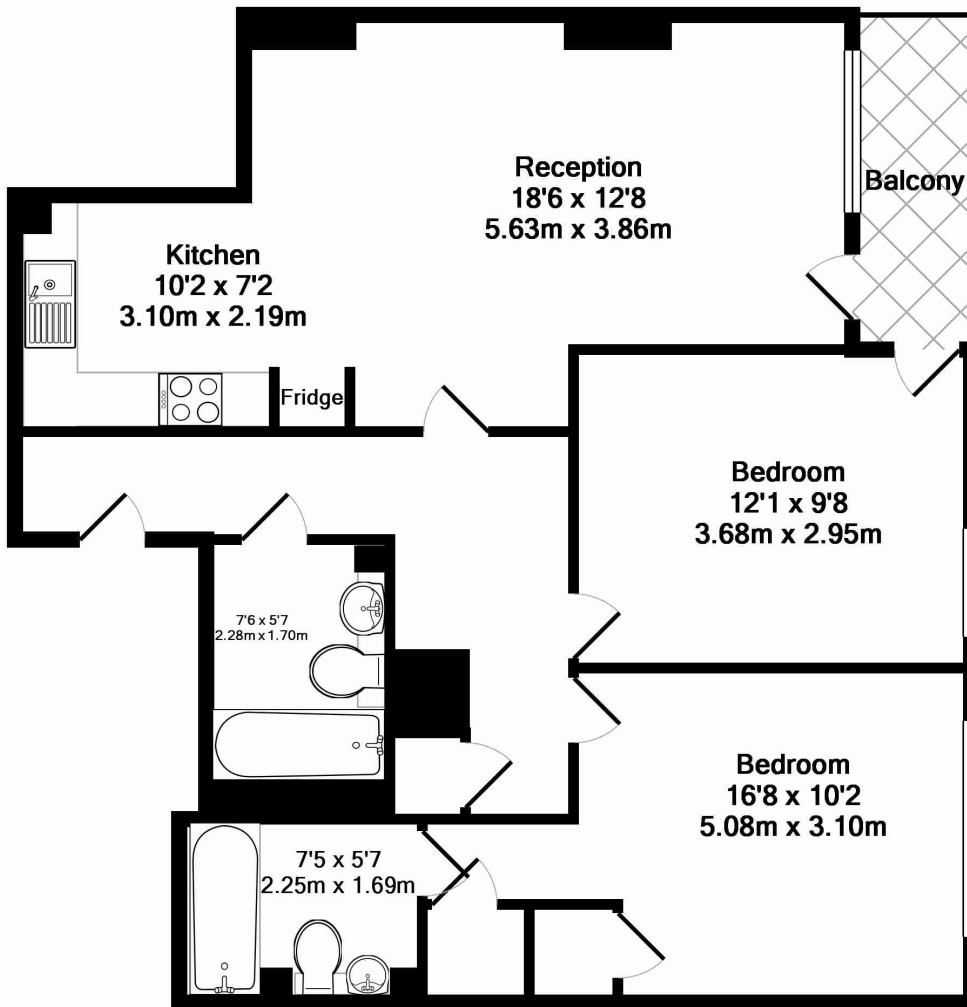
Recently refurbished upper floor two bedroom two bathroom apartment with far reaching views spanning 720 sq ft. The property features a open plan kitchen with integrated appliances and a private balcony. Residents benefit from a 24 hours concierge and facilities.

Located in the heart of Ilford in the Raphael House Development, this property is close to of shops, bars and eateries. Situated within walking distance of Ilford Station Elizabeth Line, you can be at Liverpool Street Station in under 30 minutes.

Features

- Two Bedrooms
- Two Bathrooms
- Recently Refurbished
- Open Plan Reception
- Private Balcony
- Residents Facilities

High Road, Ilford, IG1



Total Approx. Floor Area 698 Sq.Ft. (64.8 Sq.M.)

KeyAGENT LTD Floor Plans are produced and provided for illustration purposes only. Whilst every attempt has been made to ensure the plan is accurate and presents the property in the best way, measurements of doors, windows and rooms are approximate and no responsibility is taken for any error, omission or mis-statement. To find out more about KeyAGENT please visit www.keyagent.co.uk
(Tel: 0845 475 4165)
Made with Metropix ©2012

Dexters

Royal Wharf
16 Royal Crest Avenue
London
E16 2TQ
Lettings
020 7644 9391

Energy Rating: C. We aim to make our particulars both accurate and reliable. However they are not guaranteed; nor do they form part of an offer or contract. If you require clarification on any points then please contact us, especially if you're traveling some distance to view. Please note that appliances and heating systems have not been tested and therefore no warranties can be given as to their good working order.



dexters.co.uk