



5 Ganges Road, Milehouse, Plymouth, Devon, PL2 3AY



Price £230,000



Lang Town and Country are proud to offer for sale this charming mid-terrace home with no onward chain, thoughtfully styled in a classic 1920s design and positioned on the edge of Milehouse and Stoke. From the moment you step inside, the property reveals a warm and inviting atmosphere, blending period character with modern comforts.

The entrance vestibule leads into a welcoming reception hallway, setting the tone for the rest of the home. The ground floor flows beautifully into open-plan sitting and dining areas, where feature sliding doors add both style and flexibility—perfect for entertaining or creating a cosy retreat, the sitting room with a wood burning stove. The contemporary fitted kitchen is practical with a good amount of worktop space, wall and base units and designed to suit everyday living.



Upstairs, the home continues to impress with three well-proportioned bedrooms and a family bathroom, offering comfortable accommodation for a growing household.

Outside, the property benefits from an externally accessed utility store, adding valuable storage and convenience.

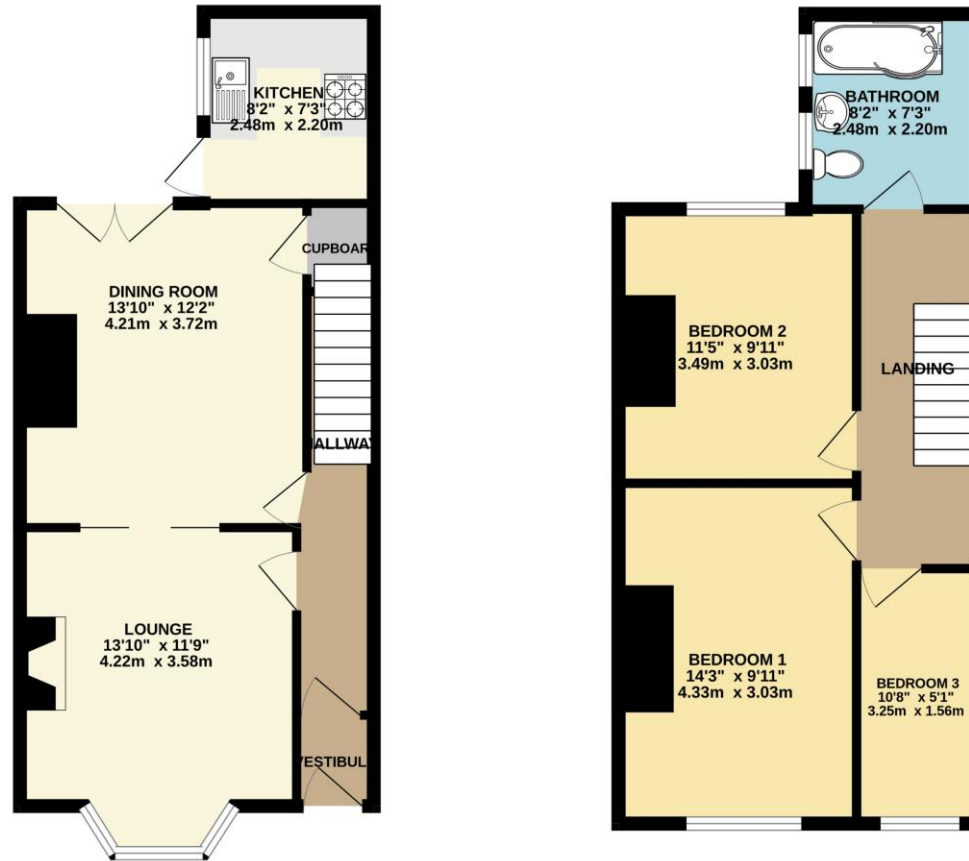
To the rear, a generous west-facing garden provides an ideal space to relax in the afternoon sun, with the added advantage of parking if desired.

Located within easy walking distance of a range of highly regarded schools, local amenities, and green open spaces, this home is perfectly suited to family life—offering both convenience and a welcoming community setting.

To view this property call Lang Town & Country Estate Agents on **01752 256000**

www.langtownandcountry.com





TOTAL FLOOR AREA : 899 sq.ft. (83.5 sq.m.) approx.

Whilst every attempt has been made to ensure the accuracy of the floorplan contained here, measurements of doors, windows, rooms and any other items are approximate and no responsibility is taken for any error, omission or mis-statement. This plan is for illustrative purposes only and should be used as such by any prospective purchaser. The services, systems and appliances shown have not been tested and no guarantee as to their operability or efficiency can be given.
Made with Metropix ©2025



Lang Town & Country
6 Mannamead Road
Plymouth
PL4 7AA

Tel: 01752 256000

Email: property@langtownandcountry.com

www.langtownandcountry.com

Lang Town & Country endeavour to ensure the accuracy of property details produced and displayed, we have not tested any apparatus, equipment, fixtures, fittings or services and so cannot verify that they are connected, in working order or fit for purpose. A buyer must check the availability of any property and make an appointment to view before embarking on any journey to see a property.

