



Oak Lane, Brandon, IP27 9RJ

Rent - £1,500 PCM Deposit - £1,730

Link detached house on Oak Lane is a wonderful opportunity for anyone looking for a spacious and comfortable home in a desirable location. With its thoughtful layout and convenient features, it is sure to meet the needs of modern living.

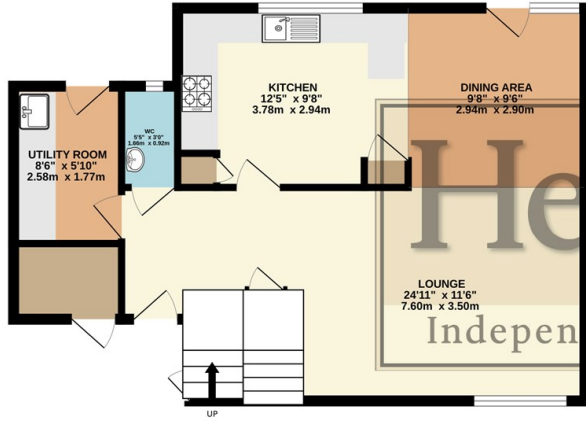
Upon entering, you are welcomed into a generous reception room, perfect for entertaining guests or enjoying quiet evenings at home. The house features three well-proportioned bedrooms, providing ample space for relaxation

- END OF TERRACE HOUSE
- LARGE OPEN PLAN KITCHEN/DINER AND LOUNGE
- ELECTRIC AIR SOURCE HEATING
- DOWNSTAIRS CLOAK ROOM & UTILITY ROOM
- EPC C
- 1.5 BATH
- COUNCIL TAX BAND
- THREE DOUBLE BEDROOMS
- READY TO VIEW NOW

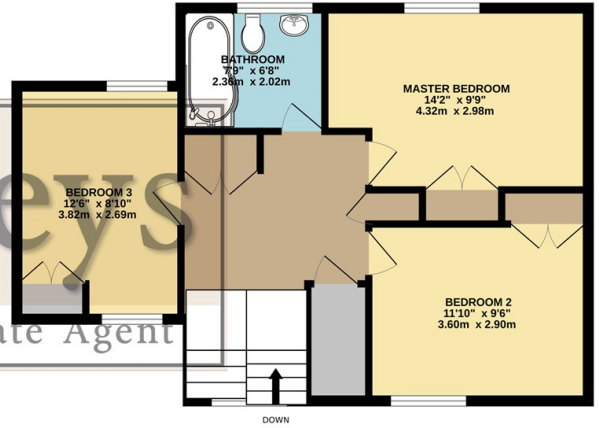


Council Tax Band: - EPC Rating: C 70

GROUND FLOOR
571 sq.ft. (53.0 sq.m.) approx.



1ST FLOOR
572 sq.ft. (53.1 sq.m.) approx.



Henleys
Independent Estate Agent

TOTAL FLOOR AREA: 1143 sq.ft. (106.2 sq.m.) approx.

Whilst every attempt has been made to ensure the accuracy of the floorplan contained here, measurements of doors, windows, rooms and any other items are approximate and no responsibility is taken for any error, omission or mis-statement. This plan is for illustrative purposes only and should be used as such by any prospective purchaser. The services, systems and appliances shown have not been tested and no guarantee as to their operability or efficiency can be given.
Made with Metropix ©2023

