



# Parkside

Knightsbridge, SW1X

£3,950 per week  
(£17,116.67 pcm)

A large Lateral flat comprised of 4 bedrooms, 3 bathrooms and is ideal for both entertaining and family living. Features include wood flooring throughout, air-conditioning, a balcony overlooking Hyde Park and 24-hour portorage in the building.

CHESTERTONS





# Parkside

## Knightsbridge, SW1X

- Air-Conditioning
- Wooden Floors
- 24 hour Porter
- Overlooking Hyde park
- Lateral Apartment
- Approx. 2246 sq ft





Elegant apartment of c. 2246 square feet in this Victorian mansion block overlooking Hyde Park. The flat has recently been renovated and is ideal for both entertaining and family living. Features include wood flooring throughout, air-conditioning, a balcony overlooking Hyde Park and 24-hour portage in the building. Drawing room, reception, entrance hallway, double bedrooms, 3 bathrooms, eat-in kitchen, utility room, balcony.

**Tenure:** To be advised  
**Furnished, Part Furnished**

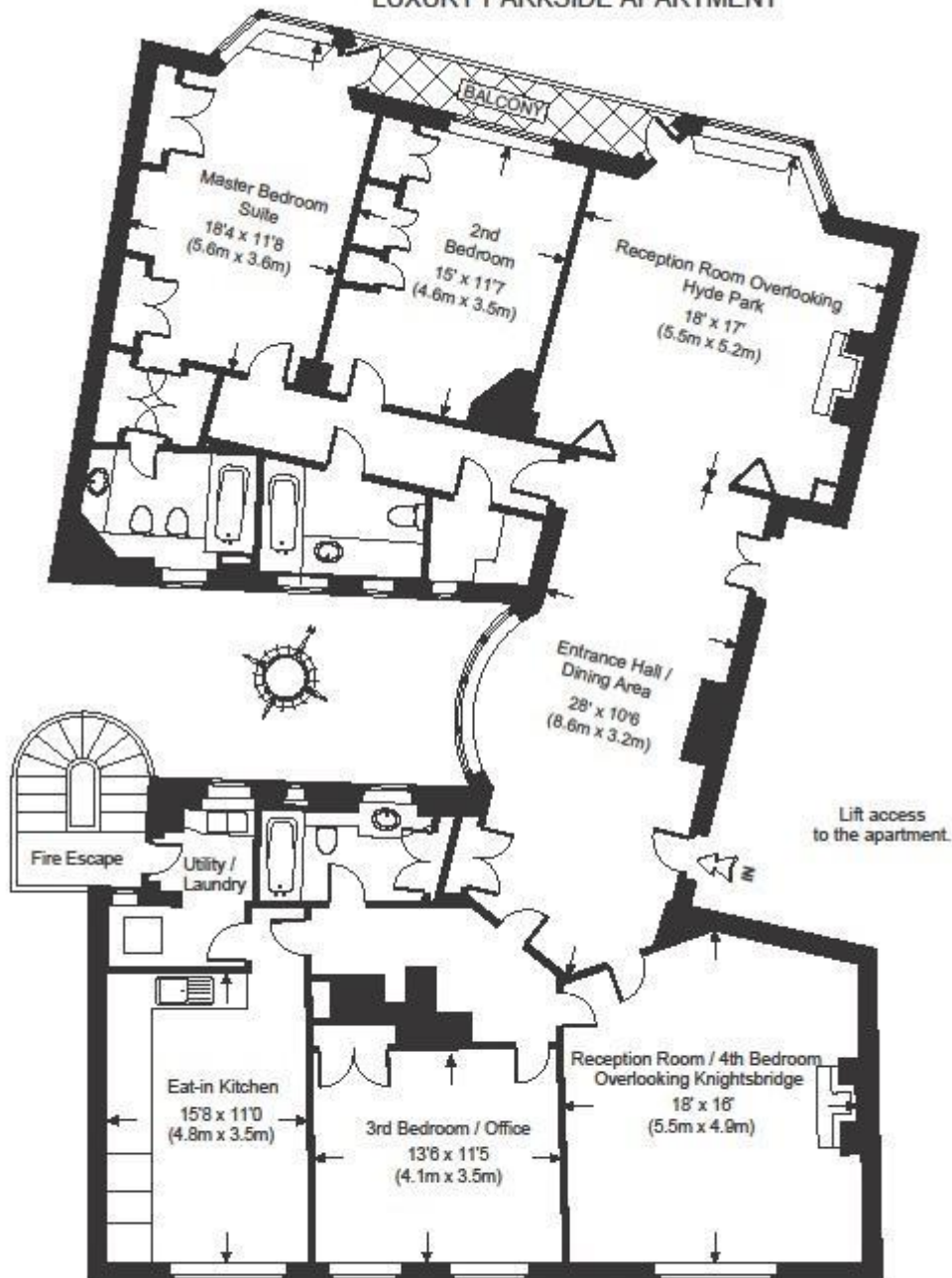
Additional tenant charges apply (fees apply to non-AST tenancies only)  
 Tenancy Agreement Fee: £300  
 References per Tenant/Guarantor: £60  
 Inventory check (approx. £100 – £250 inc. VAT)  
[chestertons.com/property-to-rent/applicable-fees](https://www.chestertons.com/property-to-rent/applicable-fees)

Energy Efficiency Rating		
	Current	Potential
Very energy efficient - lower running costs		
A (94-100)		
B (81-93)		
C (69-80)		
D (55-68)	61	61
E (39-54)		
F (21-38)		
Not energy efficient - higher running costs		
G (1-20)		
England, Scotland & Wales EU Directive 2002/91/EC		

### *Chestertons Knightsbridge & Belgravia Lettings*

31 Lowndes Street  
 London  
 SW1X 9HX  
[lettings.knightsbridge@chestertons.com](mailto:lettings.knightsbridge@chestertons.com)  
 02072353530  
[chestertons.com](https://www.chestertons.com)

## LUXURY PARKSIDE APARTMENT



KNIGHTSBRIDGE, LONDON SW1

APPROXIMATE GROSS INTERNAL AREA = 2246.10 SQ.FT. (208.67 SQ. M.)

This plan is for layout guidance only. Not drawn to scale unless stated. Windows & door openings are approximate. Whilst every care is taken in the preparation of this plan, please check all dimensions, shapes & compass bearings before making any decisions reliant upon it.

