



Cleveland Street, W1T

£688 Per week

Dexters



Cleveland Street, W1T

This exceptionally spacious two double bedroom, two bathroom apartment on the lower ground floor has been recently refurbished throughout and has its own private entrance. The property is located on this popular street in the heart of Fitzrovia.

This large two bedroom apartment occupies the entire lower ground floor of this period building and features excellent entertaining and living space. There are two spacious double bedrooms and two bathrooms and stylish fully fitted kitchen with integrated appliances including dishwasher. The apartment has wood floors throughout and excellent storage.

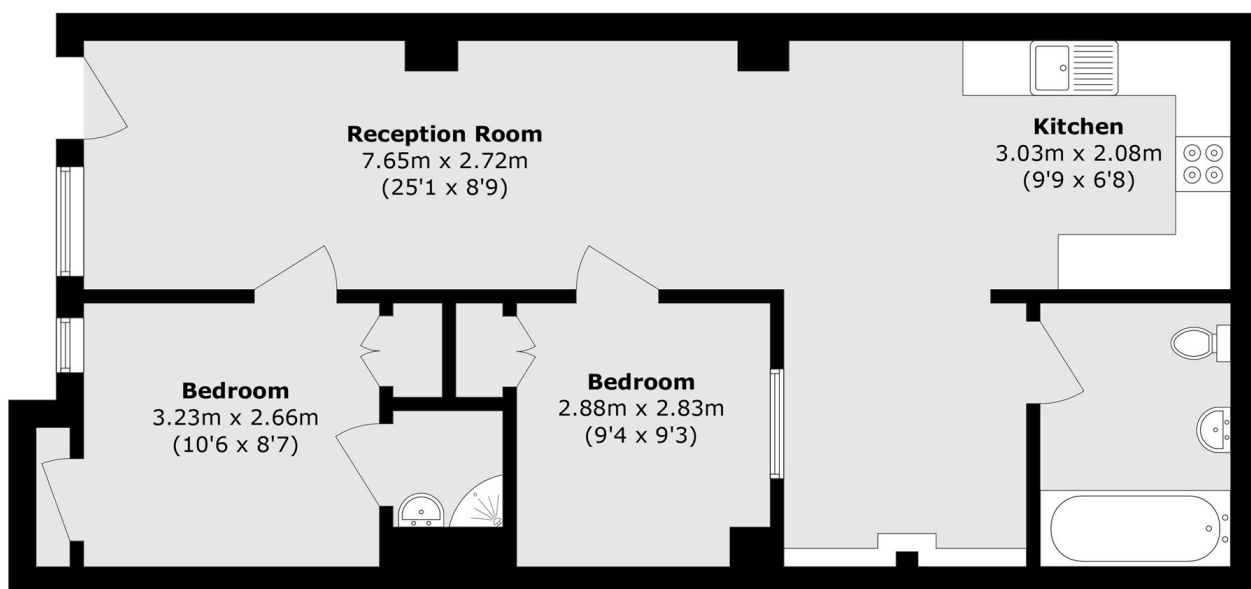
Cleveland Street is just off Goodge Street and is well positioned for the numerous bars and restaurants of Fitzrovia including the Michelin starred 'Pied deTerre' and 'Patty and Bun'. Fitzroy Square is also just a few yards away.

Features

- Period Conversion
- Wooden Floors
- Open Plan Kitchen
- Recently Refurbished
- Two Bathrooms
- Private Entrance



Cleveland Street, London, W1T



Total area (approx.): 72.8 sq. m (783.6 sq. ft)