



Salop Road, Oswestry, Shropshire, SY11 2RQ

**Offers in the Region of
£269,950**



Bedrooms: 3

Bathrooms: 2

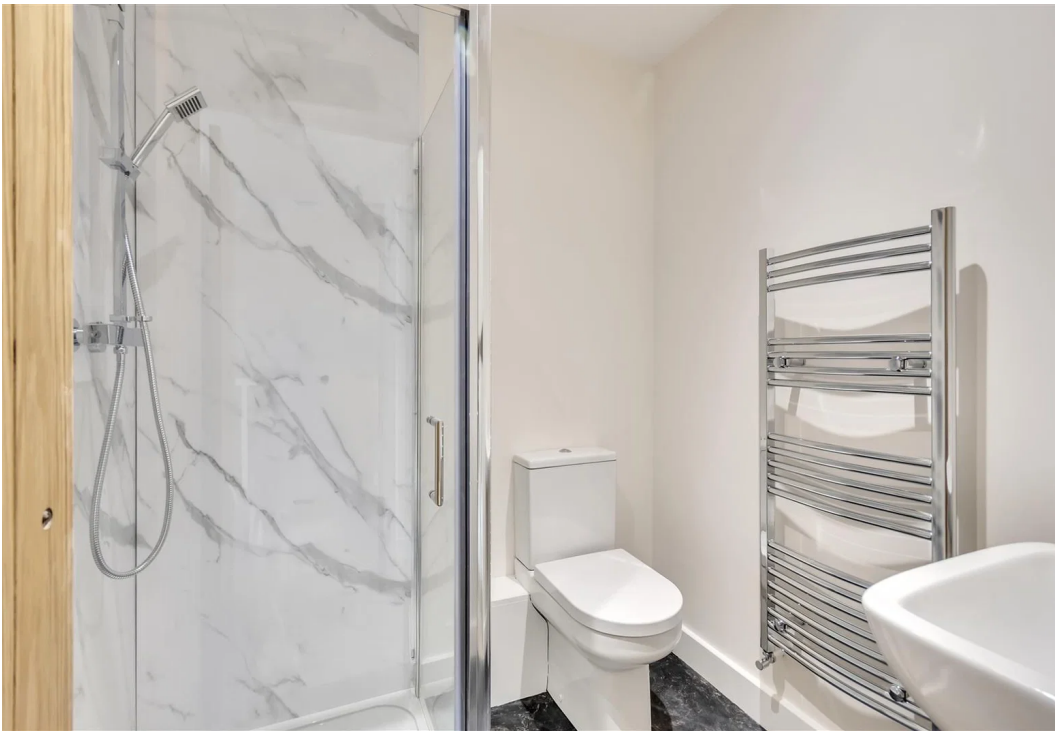
Receptions: 1

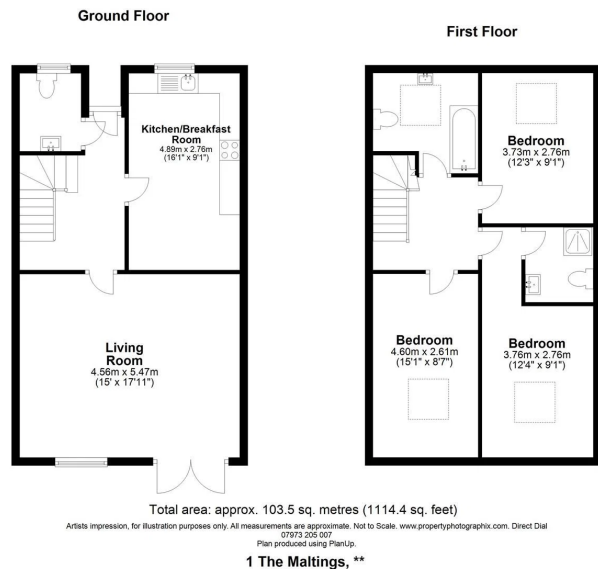
Woodhead Sales and Lettings are pleased to present this brand new end-of-terrace house, completed in 2025. This property offers a perfect blend of contemporary living and comfort, making it an ideal choice for families or professionals seeking a spacious home in a highly desirable location.

Upon entering, you are greeted by two well-appointed reception rooms, providing ample space for relaxation and entertaining guests. The layout is thoughtfully designed, ensuring a seamless flow throughout the ground floor. The property boasts three generously sized bedrooms, each offering a tranquil retreat for rest. With two contemporary bathrooms, morning routines will be a breeze, catering to the needs of a busy household.

One of the standout features of this home is the convenient parking for two vehicles, a rare find in many urban settings. Also included are solar panels and wiring for EV charging. The absence of an onward chain simplifies the buying process, allowing for a smooth and efficient transition into your new home.







Energy Efficiency Rating		
	Current	Potential
Very energy efficient - lower running costs		
(92 plus) A	96	96
(81-91) B		
(69-80) C		
(55-68) D		
(39-54) E		
(21-38) F		
(1-20) G		
Not energy efficient - higher running costs		
England & Wales	EU Directive 2002/91/EC	



Woodhead Sales & Lettings
 12 Leg Street, Oswestry, Shropshire
 01691 680044
 sales@woodheadsalesandlettings.com
<https://www.woodheadsalesandlettings.com/>

