



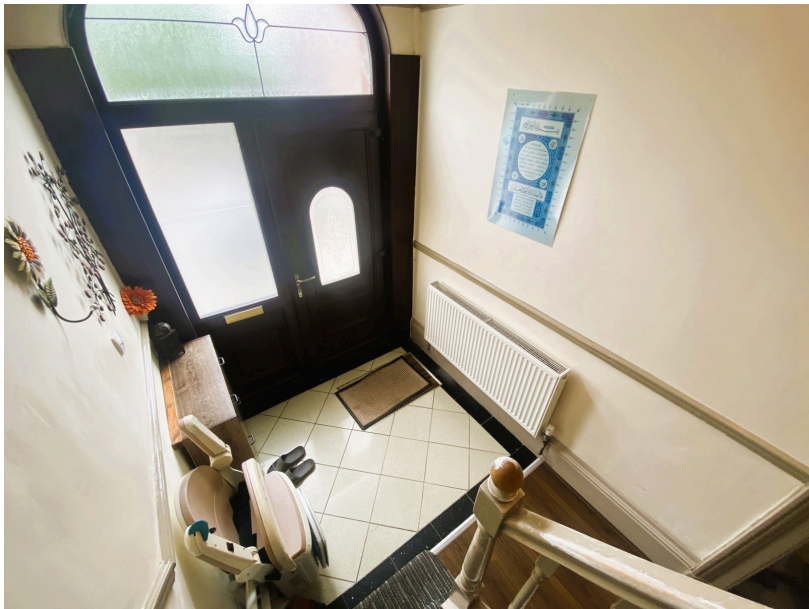
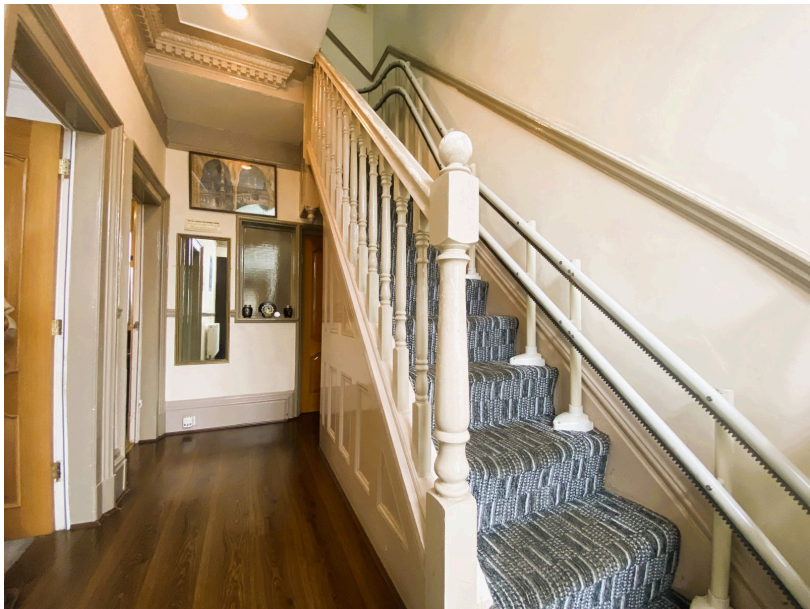
95 Windsor Road, Coppice, Oldham OL8 1RP

Offers Over £500,000

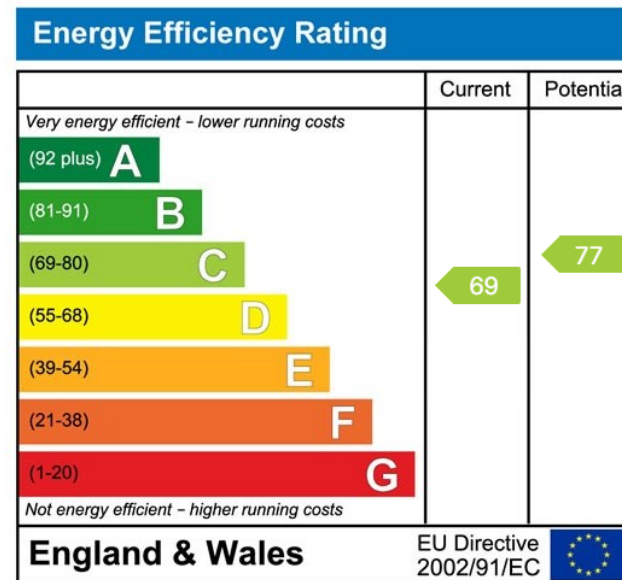
🛏️ 5 🚿 2 🚗 4



- Substantial Semi Detached
- Five Bedrooms
- Four Reception Rooms
- Perfect Family Home
- Ample Living Space
- Popular Location
- EPC - C



Situated in the ever popular Coppice area of Oldham is this substantial five bedroom, four reception room extended Victorian semi detached property. Located close to Werneth Park, local amenities and transport links plus, the highly regarded Hulme Grammar School is only a short walk away as are places of worship. This home mixes original features mixed with modern living and only internal inspection can you appreciate the size and quality of accommodation on offer. Providing a superb family home for many years to come the ample living space comprises entrance hallway with access to useful cellar, lounge with bay window, separate sitting/dining room, further sitting/play room, beautiful modern kitchen, inner hallway, wet room and another sitting room. Upstairs off the first floor landing there are five good size bedrooms all with fitted wardrobes and a modern family bathroom. The property is on a good size plot with gated driveway and ample parking.



**Chadderton Office**

509 Middleton Road,  
Chadderton, Oldham,  
OL9 9SH

chadderton@kirkham-property.co.uk  
t: 0161 626 5688