

FLETCHERS

ESTATE AGENTS



Chiswick High Road, W4

£575,000

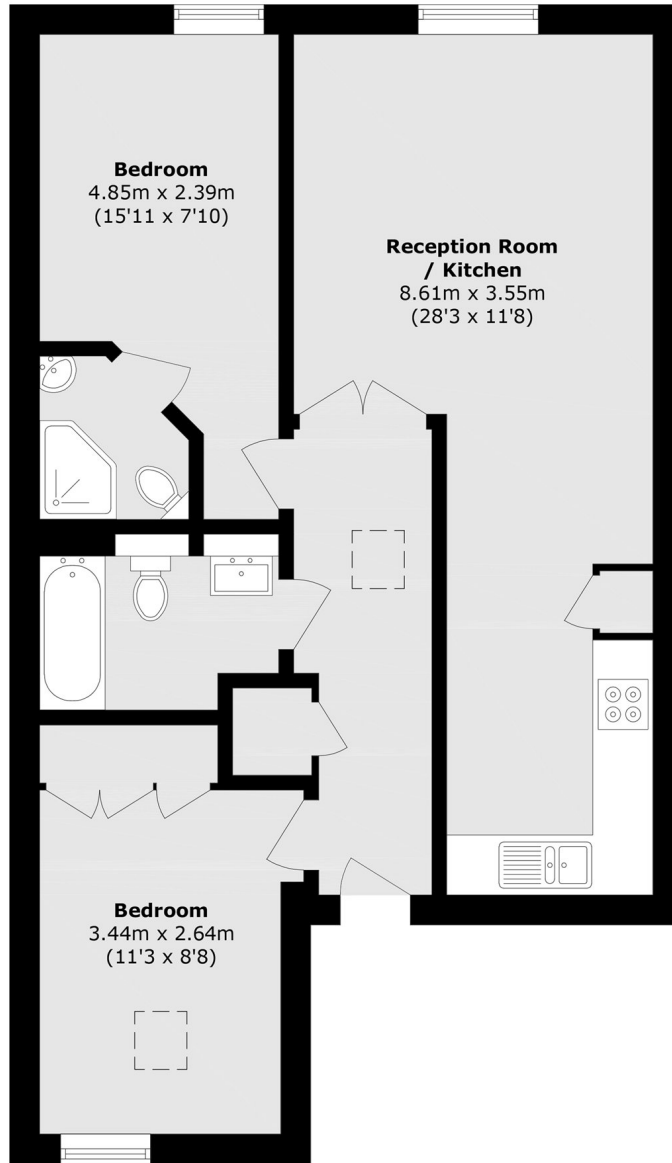
A top floor two bedroom apartment in the heart of Chiswick, with two double bedrooms and two bathrooms. A spacious 28 foot long open plan kitchen reception and dining area offers great entertaining space. A superbly located off street parking space is included.

Well positioned on Chiswick High Road with a fantastic selection of shops, restaurants and cafés readily available on the doorstep. Turnham Green Terrace and underground station is just 0.2 miles away, and there is convenient access by car to the A4/M4.

- Top Floor Apartment • Two Bedrooms • Two Bathrooms • Spacious Kitchen • Off Street Parking • No Onward Chain •

FLETCHERS

ESTATE AGENTS



Total area (approx.): 58.5 sq. m (629.6 sq. ft)

Fletchers Chiswick Turnham Green Sales
58 Turnham Green Terrace, London, W4 1QP
020 8987 3000
chiswicksales@fletcherestates.com

Energy Rating: C. We aim to make our particulars both accurate and reliable. However they are not guaranteed; nor do they form part of an offer or contract. If you require clarification on any points then please contact us, especially if you're traveling some distance to view. Please note that appliances and heating systems have not been tested and therefore no warranties can be given as to their good working order.