



Marrick Close, SW15

£460,000

A well presented two double bedroom purpose built maisonette arranged over two floors in this lovely convenient location in Putney. The flat offers a recently extended lease and off street parking, as well as communal garden and external secure storage unit.

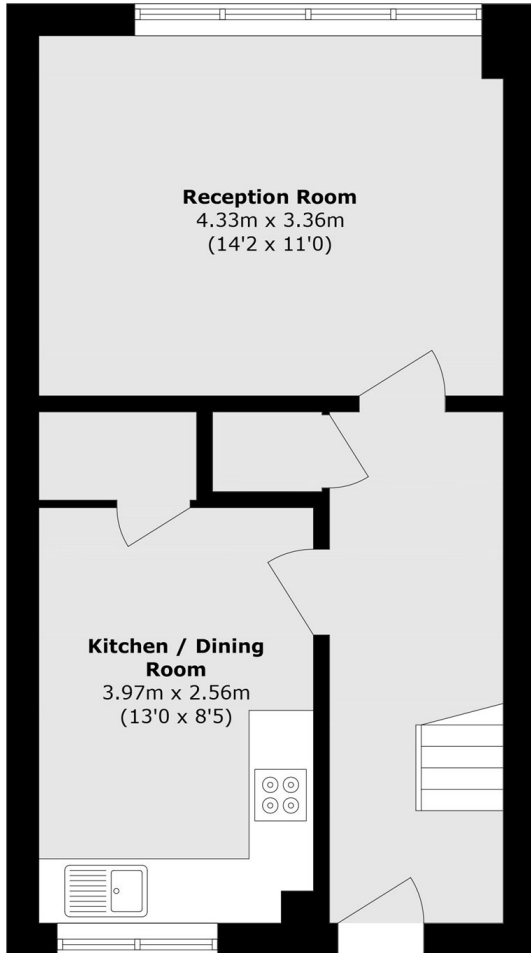
On the ground floor you have a large reception room and a modern eat-in kitchen. On the upper floor there are two double bedrooms, a family bathroom and separate cloakroom along with a large fully boarded loft, ideal for storage.

Marrick Close is positioned just off the Upper Richmond Road, has local shops and easy access to either Barnes or Putney.

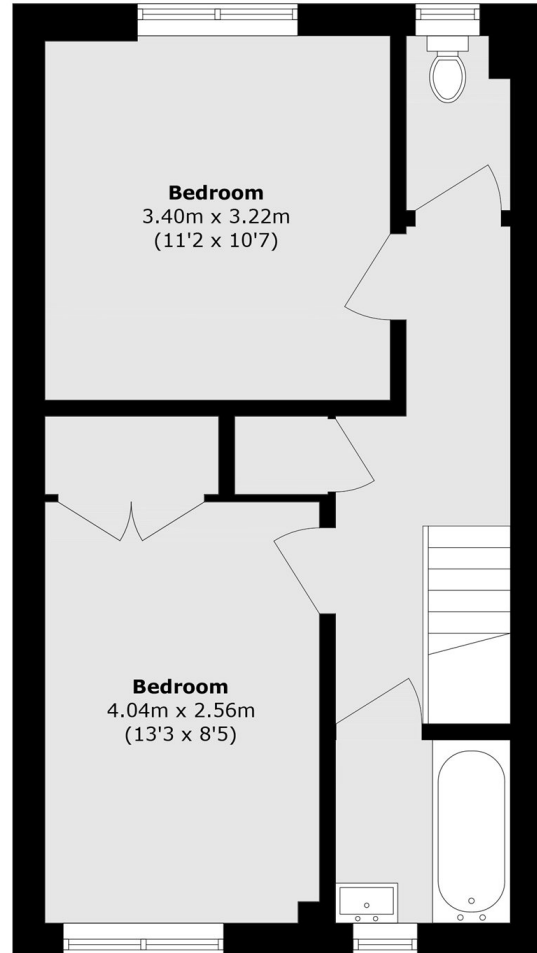
Features

- Two Double Bedrooms
- Share of Freehold
- Separate Kitchen
- Split Level
- Communal Gardens
- 771 S1.Ft

Marrick Close, London, SW15



Second Floor



Third Floor

Total area (approx.): 71.7 sq. m (771.7 sq. ft)