



# LITTLE DOUCEGROVE

Doucegrove Lane, Northiam, Rye, East Sussex



## A MOST IMPRESSIVE COUNTRY HOUSE

This characterful unlisted detached property offers substantial family accommodation. It sits in a fantastic rural position, surrounded by delightful gardens and grounds, with stunning views over the surrounding Sussex countryside.



6-7

5-6

4-5

D

Local Authority: Rother District Council

Council Tax band: H

Tenure: Freehold

Services: Mains water and electricity. Oil & heat pump heating. Solar panels. Private drainage.

Northiam 2.5 miles. Robertsbridge 9 miles (London Bridge from 70 mins). Etchingham 11 miles (London Bridge from 64 mins). Ashford 22 miles (London St Pancras from 36 mins)

Postcode: TN31 6JQ [www.what3words.com/hedgehog.ranking.sampling](http://www.what3words.com/hedgehog.ranking.sampling)



## FABULOUS RURAL LOCATION, YET CLOSE TO AMENITIES

The property is situated at the end of a long driveway, in a wonderful rural location and within an Area of Outstanding Natural Beauty. The nearby pretty village of Northiam has local shops and a post office serving day to day needs. Robertsbridge and Tenterden offer further amenities with a comprehensive range of shopping, commercial and leisure facilities available at the larger centres of Battle, Tunbridge Wells and Ashford. Rail services are available at Robertsbridge, Etchingham and Ashford stations. There is an excellent choice of schooling in the area, in both the state and private sectors, including Northiam and Bodiam Primary Schools, Vinehall at Robertsbridge, Claremont Senior at Bodiam, Battle Abbey, Marlborough House and St Ronan's at Hawkhurst, Benenden School, Dulwich Preparatory at Cranbrook, Tonbridge School, Kent College (girls) at Pembury.







## SPACIOUS ACCOMMODATION AND DELIGHTFUL GARDENS

The unlisted property offers substantial and characterful family accommodation, arranged over two floors with the added benefit of a cellar providing storage. The grand entrance hall has a fantastic vaulted ceiling and attractive galleried landing. The reception space includes a spacious double aspect sitting room with numerous windows overlooking the front and side. A study is located in one of the two roundels to the rear of the property, with an attractive fireplace and extensive fitted cupboards and bookshelves. The double aspect dining room has windows and bi-fold doors opening out to the gardens, creating a perfect space for entertaining. The wonderful kitchen / breakfast room almost spans the width of the house and includes a useful walk in pantry and utility room. The kitchen itself is located in a roundel with lovely arched windows, bespoke fitted units, a Range cooker and central island. Open plan to the kitchen, the conservatory breakfast room has French doors opening out to the gardens. There is also a second / Butler's kitchen and a separate w.c.

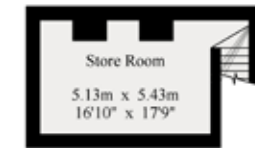
On the first floor, the spacious principal bedroom has an en suite dressing room and bathroom. There is also a family bathroom and five further bedrooms, two of which share a 'Jack n Jill' bathroom, and two of which have en suite bath / shower rooms.

Outside, the house is approached over a long driveway leading to the house and garaging. To the rear of the house, a large terrace is ideal for al fresco dining and entertaining. The delightful mature gardens, which are divided into various areas, are laid to lawn and include a swimming pool, pool house (with a bedroom and shower room) and a games barn with attached log store. In all about 40.57 acres.

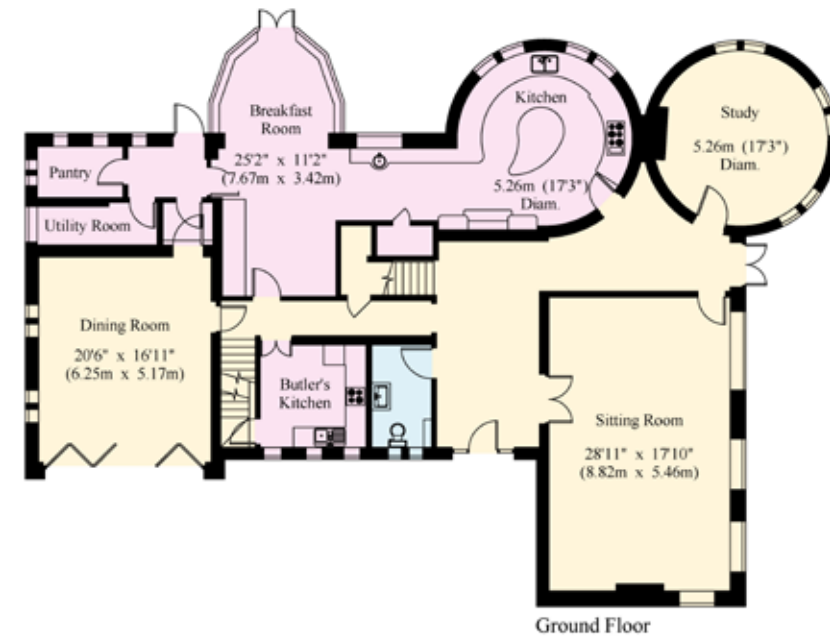
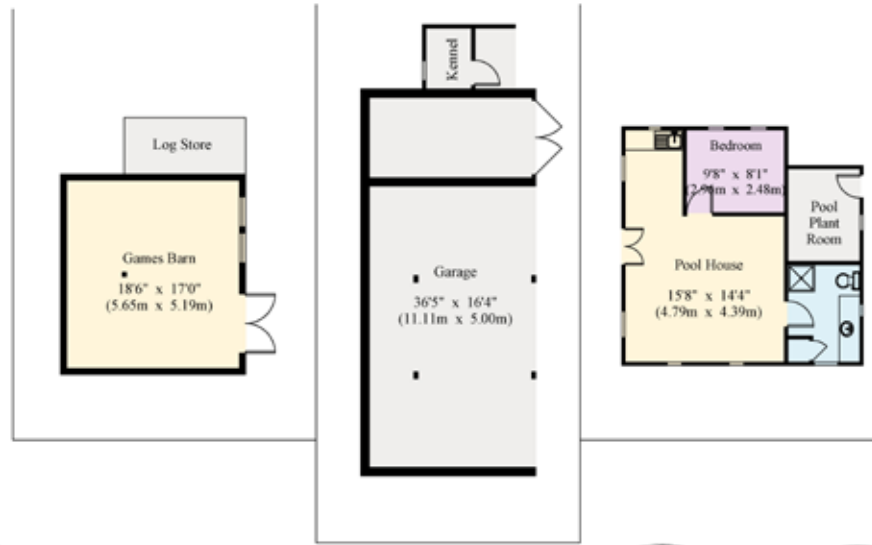


House - Gross Internal Area : 496.5 sq.m (5,344 sq.ft.)  
 Games Barn - Gross Internal Area : 29.3 sq.m (315 sq.ft.)  
 Pool House - Gross Internal Area : 45.0 sq.m (484 sq.ft.)  
 Garage - Gross Internal Area : 59.9 sq.m (644 sq.ft.)

© 03/06/26 Trueplan (UK) Ltd. 01892 614 881  
 This plan is for guidance only and must not be relied upon as a statement of fact. Attention is drawn to the Important Notice on the last page of the text of the Particulars.



Cellar



Ground Floor



First Floor



Luc Horwood  
 01892 515035  
 luc.horwood@knightfrank.com  
 Knight Frank Tunbridge Wells  
 47 High Street,  
 Tunbridge Wells, Kent, TN1 1XL  
 knightfrank.co.uk

Your partners in property

This plan is for layout guidance only. Not drawn to scale unless stated. Windows and door openings are approximate. Whilst every care is taken in the preparation of this plan, please check all dimensions, shapes and compass bearings before making any decisions reliant upon them.

1. Particulars: These particulars are not an offer or contract, nor part of one. You should not rely on statements given by Knight Frank in the particulars, by word of mouth or in writing ("information") as being factually accurate about the property, its condition or its value. Neither Knight Frank nor any joint agent has any authority to make any representations about the property, and accordingly any information given is entirely without responsibility on the part of Knight Frank. 2. Material Information: Please note that the material information is provided to Knight Frank by third parties and is provided here as a guide only. While Knight Frank has taken steps to verify this information, we advise you to confirm the details of any such material information prior to any offer being submitted. If we are informed of changes to this information by the seller or another third party, we will use reasonable endeavours to update this as soon as practical. 3. Photos, Videos etc: The photographs, property videos and virtual viewings etc. show only certain parts of the property as they appeared at the time they were taken. Areas, measurements and distances given are approximate only. 4. Regulations etc: Any reference to alterations to, or use of, any part of the property does not mean that any necessary planning, building regulations or other consent has been obtained. A buyer must find out by inspection or in other ways that these matters have been properly dealt with and that all information is correct. 5. Fixtures and fittings: A list of the fitted carpets, curtains, light fittings and other items fixed to the property which are included in the sale (or may be available by separate negotiation) will be provided by the Seller's Solicitors. 6. VAT: The VAT position relating to the property may change without notice. 7. To find out how we process Personal Data, please refer to our Group Privacy Statement and other notices at <https://www.knightfrank.com/legals/privacy-statement>.

Particulars dated June 2026. Photographs and videos dated June 2026. All times and distances stated in these particulars are approximate. All information is correct at the time of going to print. Knight Frank is the trading name of Knight Frank LLP. Knight Frank LLP is a limited liability partnership registered in England and Wales with registered number OC305934. Our registered office is at 55 Baker Street, London W1U 8AN. We use the term 'partner' to refer to a member of Knight Frank LLP, or an employee or consultant. A list of members names of Knight Frank LLP may be inspected at our registered office. If you do not want us to contact you further about our services then please contact us by either calling 020 3544 0692, email to [marketing.help@knightfrank.com](mailto:marketing.help@knightfrank.com) or post to our UK Residential Marketing Manager at our registered office (above) providing your name and address.

