



Guide Price

£200,000

Freehold

2x  1x  1x 

**Mallow Road, Minster On
Sea, Kent, ME12**

OVER 60?

Secure this property
for up to **59% less!**

Wards
Helping you move forwards



Main features

- Being sold chain free
- Two allocated parking spaces as well as a visitors spot
- Fantastic location with schools, convenience store a short stroll away
- Good links off the island to the A249
- Perfect for first time buyers with no work required

Accommodation

GROUND FLOOR

Entrance Hall
 Downstairs Cloakroom: 5'8 x 3'4 (1.73m x 1.02m)
 Lounge/Dining Area: 16'6 x 11'2 (5.03m x 3.41m)
 Kitchen: 9'3 x 6'4 (2.82m x 1.93m)

FIRST FLOOR

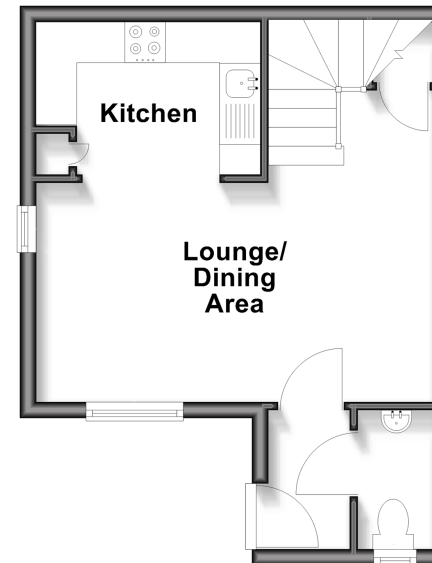
Landing
 Bedroom 1: 14'1 x 6'8 (4.30m x 2.03m)
 Bedroom 2: 10'10 x 10'4 (3.30m x 3.15m)
 Bathroom: 6'4 x 5'6 (1.93m x 1.68m)

OUTSIDE

Front Garden
 Allocated Parking

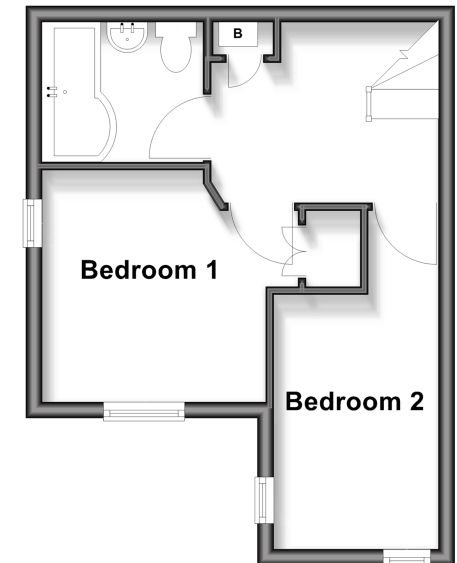
Ground Floor

Approx. 26.6 sq. metres (286.0 sq. feet)



First Floor

Approx. 26.6 sq. metres (286.0 sq. feet)



Call Sheerness - 01795 664651 ■ wardsofkent.co.uk

■ Legal advice should be taken to verify fixtures/fittings, planning, alterations and/or lease details
 ■ Through a Homewise Home For Life Plan people aged 60+ can secure this property for up to 59% less, by purchasing a Lifetime Lease

■ Appliances & services are untested, dimensions are approximate and floor plans are not to scale



11635775/20260129/JLS/JLS