



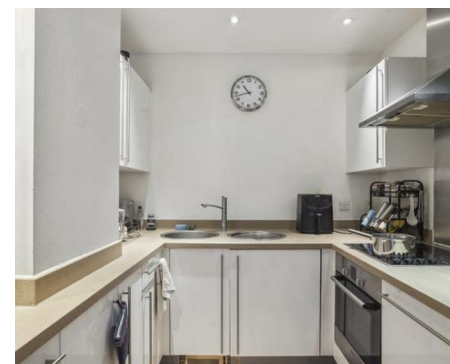
NEWINGTON
LONDON

1 Bedrooms

Apartment

Located in London

£705 Per Month



info@newingtonstates.com

<http://www.newingtonstates.com>

020 7724 2233



Set on the third floor of a well-maintained portered block in Paddington, this attractive one-bedroom apartment is finished to a high specification and enjoys an abundance of natural light, complemented by wooden flooring throughout.

The property comprises a fully integrated kitchen, contemporary bathroom, double bedroom with wardrobes, and a bright reception room with large windows. The building further benefits from lift access for added convenience.

EPC rating: C

Energy Efficiency Rating: C

Agents Note: Whilst every care has been taken to prepare these particulars, they are for guidance purposes only. All measurements are approximate and are for general guidance purposes only and whilst every care has been taken to ensure their accuracy, they should not be relied upon and potential buyers/tenants are advised to recheck the measurements.

NEWINGTON LONDON

60 Upper Montagu Street

London

W1H 1SN

020 7724 2233

info@newingtonstates.com

<http://www.newingtonstates.com>