



Guide Price

£450,000

Freehold

4x  2x  2x 

**Martello Drive, Hythe,
Kent, CT21**

OVER 60?

Secure this property
for up to **59% less!**

Wards

Helping you move forwards



Main features

- Spacious home with large sitting room and lounge/diner
- Extended and finished to a very high standard
- Bedroom 1 with en-suite and dual vanity sinks
- Close to canal and few minutes drive from Hythe's vibrant High Street
- Close to primary school

Accommodation

GROUND FLOOR

- Porch
- Entrance Hall
- Cloakroom
- Kitchen: 11'9 x 9'3 (3.58m x 2.82m)
- Lounge/Diner: 24'2 x 12'11 maximum (7.37m x 3.94m)
- Sitting Room: 24'2 x 12'3 (7.37m x 3.74m)
- Office/Store: 5'5 x 2'11 (1.65m x 0.89m)
- Conservatory: 15'5 x 6'6 (4.70m x 1.98m)

FIRST FLOOR

- Landing
- Bedroom 1: 24'2 x 12'11 maximum (7.37m x 3.94m)
- En-Suite Shower Room: 12'0 x 4'6 (3.66m x 1.37m)
- Bedroom 2: 12'4 x 11'10 (3.76m x 3.61m)
- Bedroom 3: 12'4 x 11'10 (3.76m x 3.61m)
- Bedroom 4: 8'5 x 7'11 (2.57m x 2.41m)
- Bathroom: 6'5 x 5'6 (1.96m x 1.68m)

OUTBUILDING

- Garage: 19'4 x 14'8 (5.90m x 4.47m)

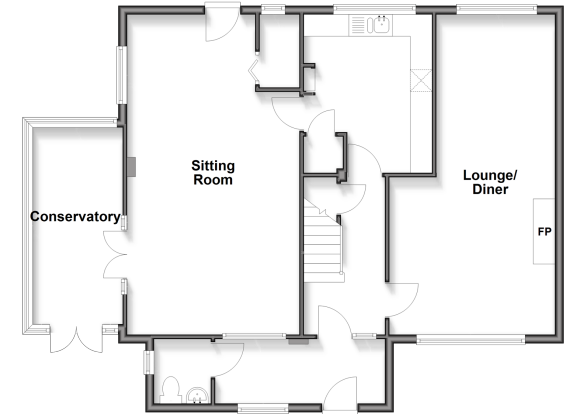
OUTSIDE

- Off Road Parking
- Front & Rear Gardens

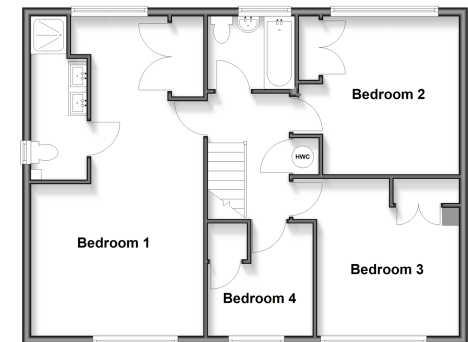
Call Hythe - 01303 267473 ■ wardsof Kent.co.uk

- Legal advice should be taken to verify fixtures/fittings, planning, alterations and/or lease details
- Appliances & services are untested, dimensions are approximate and floor plans are not to scale
- Through a Homewise Home For Life Plan people aged 60+ can secure this property for up to 50% less, by purchasing a Lifetime Lease.

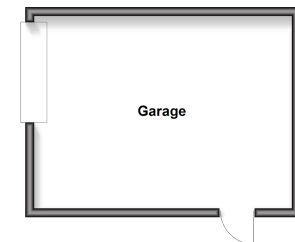
Ground Floor
Approx. 90.3 sq. metres (971.5 sq. feet)



First Floor
Approx. 72.2 sq. metres (776.8 sq. feet)



Outbuilding
Approx. 26.2 sq. metres (281.7 sq. feet)



12824524/20250927/OH/DC