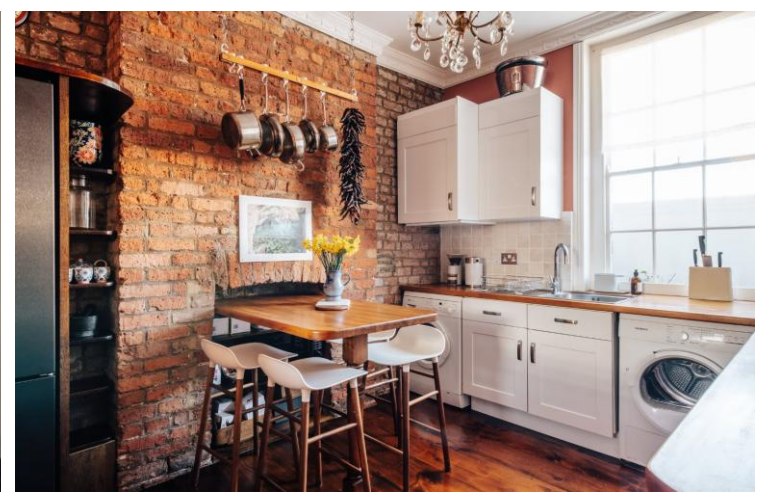




Church Street
Marylebone, NW8

CHESTERTONS





Impeccably located in the heart of the vibrant town centre, this stylish period apartment offers a perfect blend of character and contemporary living. Boasting two well-appointed bedrooms, this property comes either fully furnished or part-furnished to suit your needs. The apartment features a spacious open-plan living area, ideal for entertaining guests or relaxing after a long day. The modern kitchen is equipped with high-quality appliances and ample storage space. Residents will appreciate the convenience of being within walking distance to local amenities, shops, and transport links. With its prime location and charming character, this apartment presents an excellent opportunity for those seeking a comfortable and conveniently located home in the heart of town. Don't miss out on the chance to make this delightful property yours!

- Two Bedrooms
- Two Reception Rooms
- Three Bathrooms
- Prime Town Location
- Period Features

£6,500 pcm

Additional tenant charges apply (fees apply to non-AST tenancies only)

Tenancy Agreement Fee: £300

References per Tenant/Guarantor: £60

Inventory check (approx. £100 – £250 inc. VAT)

[chestertons.co.uk/property-to-rent/applicable-fees](https://www.chestertons.co.uk/property-to-rent/applicable-fees)

Deposit Required:	Five weeks
Local Authority:	Westminster
Council Tax Band:	C
EPC Rating:	C

Chestertons Marylebone Lettings

20a Paddington Street

London

W1U 5QP

marylebonelettingsusers@chestertons.co.uk

[chestertons.co.uk](https://www.chestertons.co.uk)