



## The Island

Thames Ditton, KT7 0SQ

Redevelopment opportunity! Stillwaters is a detached timber and brick-built bungalow situated in an enviable river location on Thames Ditton Island. Currently a 2 bedroom, 1 bathroom property sitting on a 40ft wide plot and offering incredible potential - with a generous front garden and expanse of patio to riverside with private mooring. A large reception room dominates the heart of the current house with windows and French doors showcasing views of the Thames. No onward chain.

Material Info: Brick, wood & tiles. Water / Electricity / Sewerage: Mains. Heating: Gas Mains. Broadband: None currently. Mobile coverage: Indoor: varied Outdoor: likely.

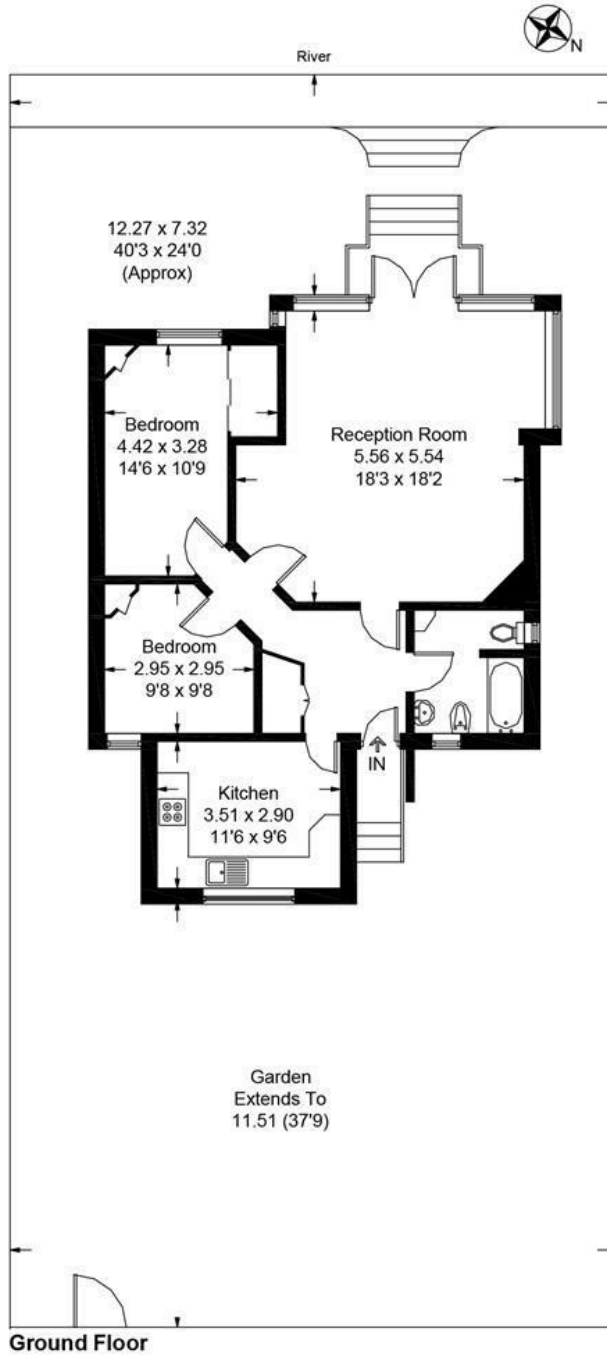
- 40ft plot on Thames Ditton Island
- Excellent development opportunity
- 2 bedrooms, 1 bathroom
- Private mooring
- SW facing riverside location
- No onward chain
- Large reception room with views to river
- Prime Thames Ditton location

**Guide Price £675,000**

# Floor Plan

## The Island

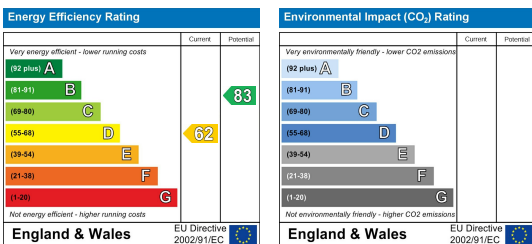
Approximate Gross Internal Area = 73.7 sq m / 793 sq ft



Ground Floor

Illustration for identification purposes only, measurements are approximate, not to scale. Fourlabs.co © (ID1162478)

## Energy Efficiency Graph



These particulars, whilst believed to be accurate are set out as a general outline only for guidance and do not constitute any part of an offer or contract. Intending purchasers should not rely on them as statements of representation of fact, but must satisfy themselves by inspection or otherwise as to their accuracy. No person in this firm's employment has the authority to make or give any representation or warranty in respect of the property.