



# Chiltern Street

Marylebone, W1U

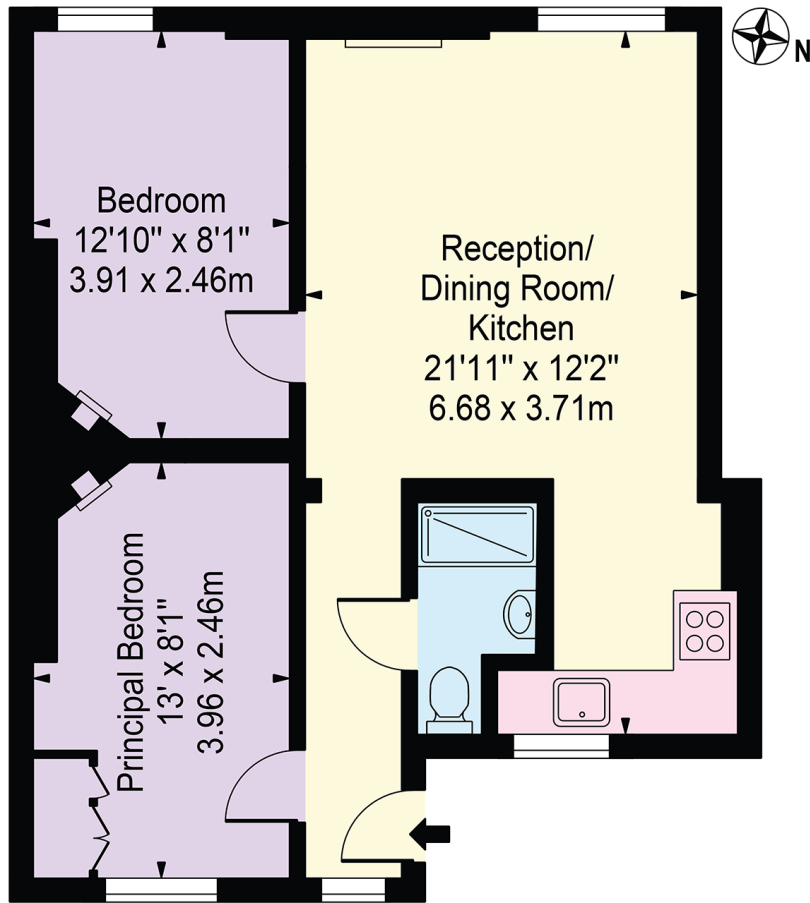
Asking Price £750,000

This bright and well-presented two bedroom apartment is situated on the third floor of a desirable mansion block on the prestigious Chiltern Street, offering comfortable living in one of Marylebone's most sought after locations.

**CHESTERTONS**

# York Mansions

Approx. Gross Internal Area 517 Sq Ft - 48.03 Sq M



## Third Floor

For Illustration Purposes Only - Not To Scale

This floor plan should be used as a general outline for guidance only and does not constitute in whole or in part an offer or contract. Any intending purchaser or lessee should satisfy themselves by inspection, searches, enquiries and full survey as to the correctness of each statement. Any areas, measurements or distances quoted are approximate and should not be used to value a property or be the basis of any sale or let. Copyright Morriarti Photography & Design LTD

**Tenure:** Leasehold 172 years 3 months

**Service Charge:** £2489 per annum

**Ground Rent:** None

**Local Authority:** City of Westminster

**Council Tax Band:** D

Score	Energy rating	Current	Potential
92+	A		
81-91	B		
69-80	C	71 C	79 C
55-68	D		
39-54	E		
21-38	F		
1-20	G		

## Chestertons Hyde Park & Marylebone Sales

40 Connaught Street  
 London  
 W2 2AB  
 hydepark@chestertons.co.uk  
 020 7298 5900  
 chestertons.co.uk

Chesterton UK Services Limited trading as Chestertons for themselves and for the vendor of this property whose agents they are, give notice that (i) these particulars do not constitute any part of an offer or contract, (ii) all statements contained within these particulars are made without responsibility on the part of Chestertons or the vendor, (iii) whilst made in good faith, none of the statements contained within these particulars are to be relied upon as a statement or representation of fact, (iv) any intending purchasers must satisfy themselves by inspection or otherwise as to the correctness of each of the statements contained within these particulars, (v) the vendor does not make or give either Chestertons or any person in their employment any authority to make or give representation or warranty whatsoever in relation to this property. Wide angle lenses may be used. ©Copyright Chestertons | Chesterton UK Services Limited | Registered Office 40 Connaught Street, Hyde Park, London W2 2AB Registered Company Number 05334580.



This paper is 100% recyclable