



Mersey Crescent | Manchester | M20 2YJ

Asking Price £349,950

The
**GOOD
ESTATE**
AGENCY

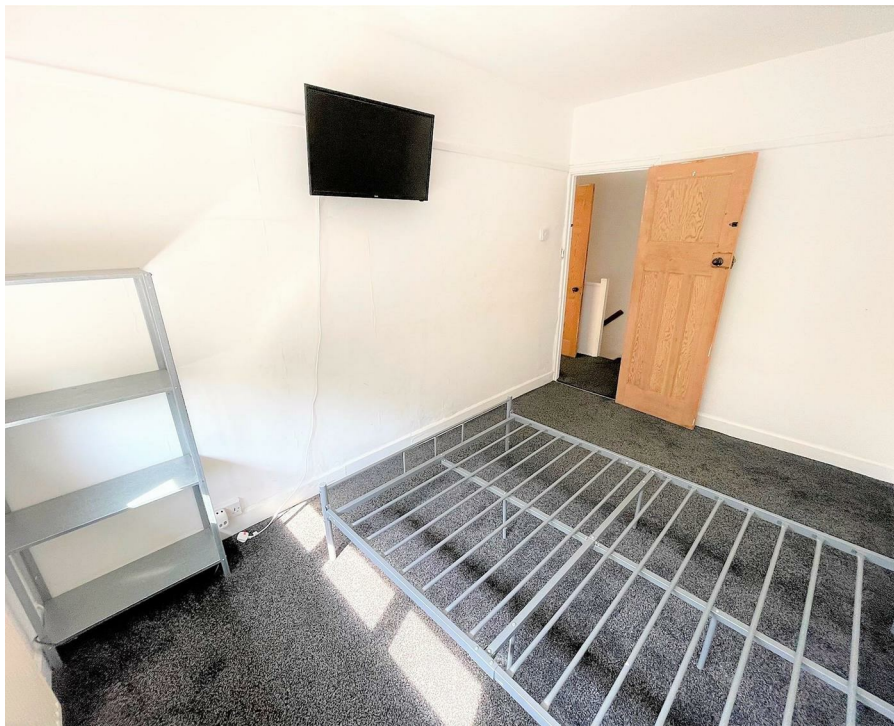
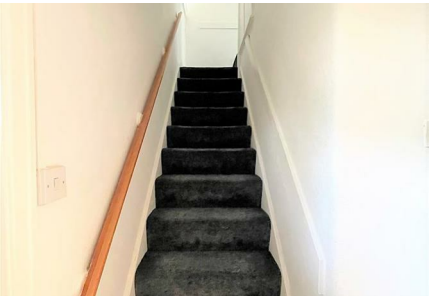
Mersey Crescent | Didsbury
Manchester | M20 2YJ
Asking Price £349,950

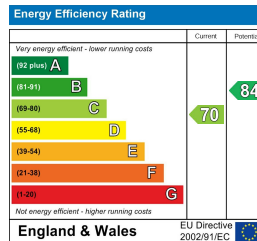
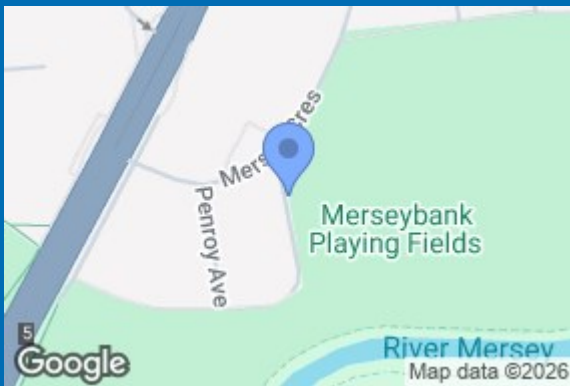
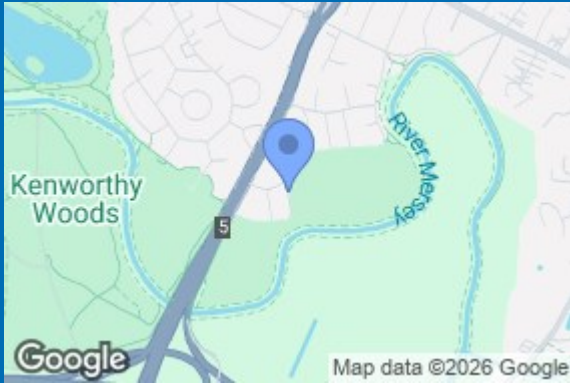
3 BED, SEMI-DETACHED PROPERTY. A conveniently located three bedroom semi-detached property close to Didsbury Village with excellent access to Manchester city centre and the nearby motorway network from Princess Parkway. The property comprises: entrance hall, spacious living & dining room with feature fireplace and stained wooden floors, separate fitted kitchen with large range cooker, utility room & back door to rear garden, stairs to landing, master bedroom with fitted shelving unit, second double bedroom, single bedroom and house bathroom with shower over bath. Further benefits include front and rear gardens. Located next to Merseybank Playing Fields and only a short walk to Kenworthy Woods, Chorlton Water Park and the serene Marie Louise Gardens in Didsbury. Currently let for £1,300pcm until 13/8/26, achieving a rental yield of 4.5%.



- THREE BEDROOMS
- CURRENTLY LET FOR £1,300PCM UNTIL 13/8/26, ACHIEVING A RENTAL YIELD OF 4.5%
- SEPARATE FITTED KITCHEN
- HOUSE BATHROOM WITH SHOWER OVER BATH
- ON STREET PARKING
- SEMI DETACHED PROPERTY
- SPACIOUS LIVING & DINING ROOM
- UTILITY ROOM
- FRONT & REAR GARDENS







68 Quay Street
 Manchester
 M3 3EJ
 0161 513 2034
 hello@thegea.co.uk
 www.thegea.co.uk