



JULES MIDDLETON

exp<sup>®</sup> UK

@ jules.middleton@exp.uk.com

🌐 julesmiddleton.exp.uk.com

☎ 07539 429 451



**126 Marymead Drive,**  
**Guide Price £350,000**

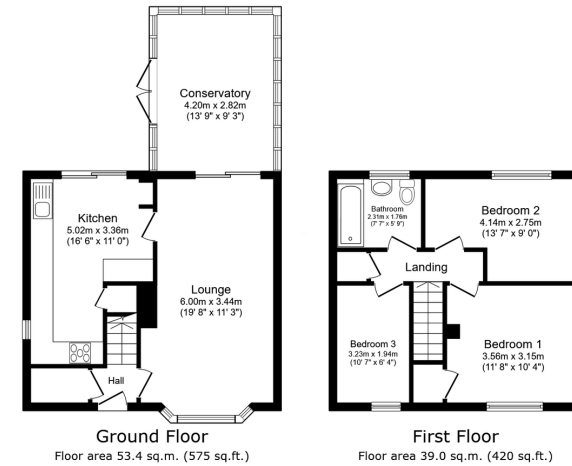
 3  1  1





- Three Bedroom End-terrace House
- Spacious kitchen with potential to extend (STPP).
- South-east facing private garden with three large sheds for added storage.
- New boiler in 2025.
- Short distance from main town centre/old town and shopping area.
- Family bathroom.
- All season conservatory.
- Driveway for two cars.
- Walking distance to great schooling and amenities.
- Please quote JM0792 when enquiring.





Total floor area: 92.4 sq.m. (995 sq.ft.)

This floor plan is for illustrative purposes only. It is not drawn to scale. Any measurements, floor areas (including any total floor area), openings and orientations are approximate. No details are guaranteed, they cannot be relied upon for any purpose and do not form any part of any agreement. No liability is taken for any error, omission or misstatement. A party must rely upon its own inspection(s). Powered by [www.Propertybox.io](http://www.Propertybox.io)

A well-proportioned three bedroom end-of-terrace house featuring a private driveway, south-east facing garden, and conservatory, ideally located within walking distance of excellent schools and local amenities.

