



**7 Arundel Close, Maidenhead, SL6 5JY**  
**£610,000 Freehold**

A particularly well kept and maintained three bedroom detached bungalow situated in this desirable cul de sac within walking distance of local amenities and National Trust land at Pinkneys Green.

## **Side Entrance Door**

### **Entrance Hall**

Airing cupboard, access hatch to part boarded loft with light, storage cupboard.

### **Cloakroom**

Close coupled WC, wash hand basin with tiled surround, cupboard below.

### **Sitting/Dining Room**

Fireplace with electric coal effect fire, door to:

### **Kitchen**

Well fitted with inset one and a quarter sink with mixer tap, water softener in cupboard under, range of floor and wall cupboards and drawers, work surfaces, Bosch oven, ceramic hob, tall storage cupboard, space for washing machine and tumble dryer and tall fridge/freezer, tiled floor, cupboard housing Worcester gas fired boiler plus additional storage space, side access door to garden.

### **Bedroom 1**

Fitted wall to wall wardrobe cupboards with cupboards over.

### **Bedroom 2**

Range of floor to ceiling wardrobes with storage cupboards above, recess for a double bed.

### **Bedroom 3**

Fitted shelving.

### **Shower Room**

White suite of close coupled WC, wash hand basin set into a unit with cupboards over, corner shower cubicle with fully tiled walls, chrome heated towel rail.

### **Garage**

Brick built garage with light and power, up and over door, side access door.

### **Outside**

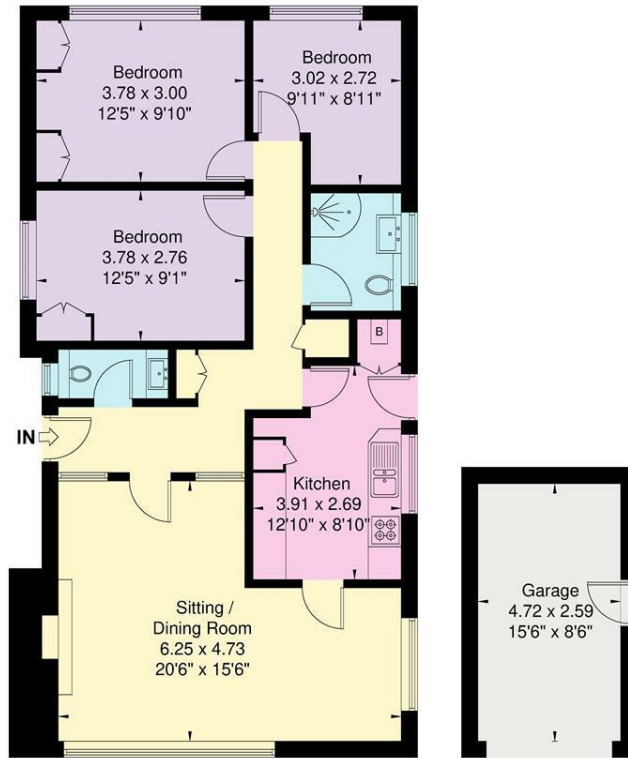
There is a well maintained rear garden laid to lawn with paved patio and raised flower bed, garden shed with verandah, timber fencing on two sides, two side access gates to front. The front garden has access drive and off road parking.

# Floor Plan

Approximate Floor Area = 84.5 sq m / 909 sq ft  
 GARAGE = 12.2 sq m / 131 sq ft  
 TOTAL = 96.7 sq m / 1040 sq ft

Arundel Close

**Waterman**  
 Established 1990

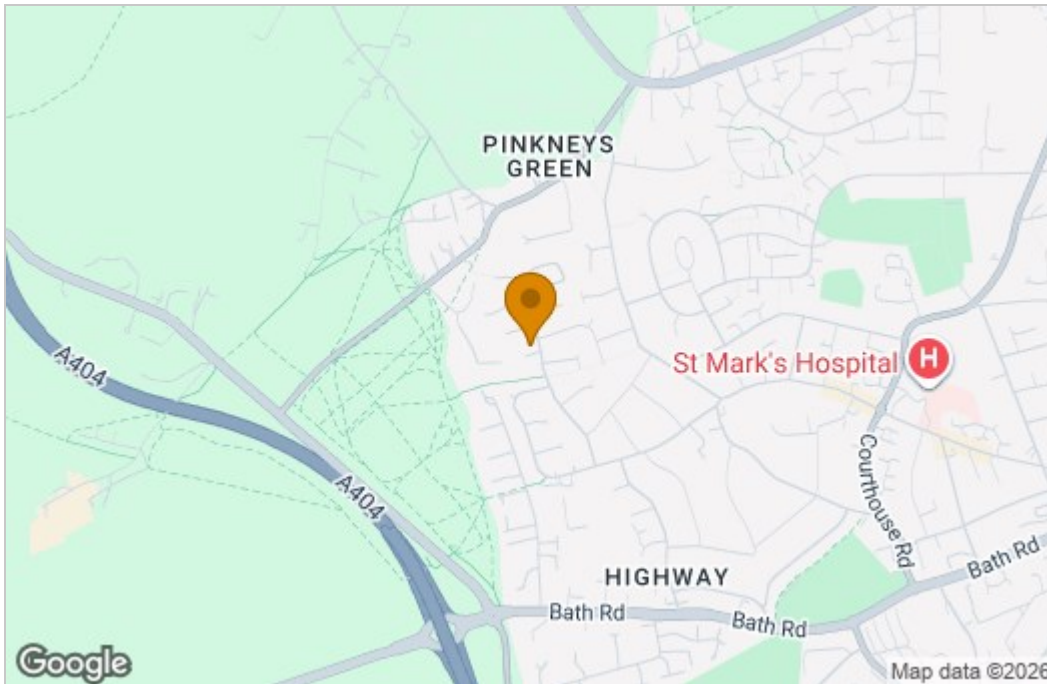


Ground Floor

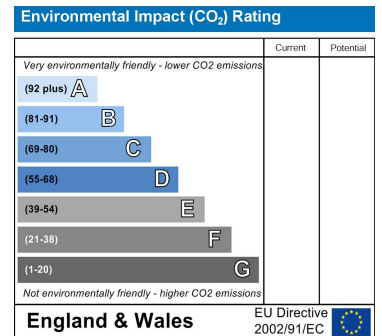
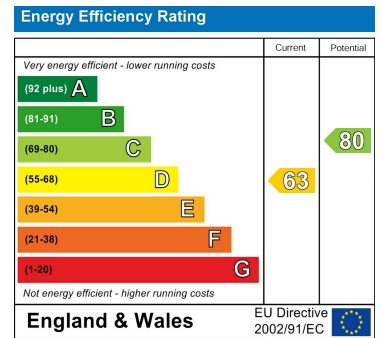
(Not Shown In Actual Location / Orientation)

Illustration for identification purposes only, measurements are approximate, not to scale.

# Area Map



# Energy Efficiency Graph



These particulars, whilst believed to be accurate are set out as a general outline only for guidance and do not constitute any part of an offer or contract. Intending purchasers should not rely on them as statements of representation of fact, but must satisfy themselves by inspection or otherwise as to their accuracy. No person in this firm's employment has the authority to make or give any representation or warranty in respect of the property.