



* £260,000 - £280,000 * THIS IS A MUST-VIEW * Positioned on the sought-after Nelson Road in Leigh-on-Sea, this well-presented first-floor flat offers spacious accommodation and a fantastic location close to both local amenities and transport links.

The property features two good-sized bedrooms and a bright bay-fronted lounge/diner, creating a welcoming living space with plenty of natural light. Ideal for both relaxing and entertaining, the room offers ample space for dining as well as comfortable everyday living.

The flat also benefits from a fitted kitchen, a well-appointed bathroom, and allocated parking to the rear — a valuable addition in this popular residential area.

Conveniently located within easy reach of Leigh Broadway and Leigh Road, residents can enjoy a wide range of shops, cafés, bars, and restaurants, while nearby Westcliff Station provides direct connections into London for commuters.

Combining generous living space with an excellent coastal location, this property presents a superb opportunity for anyone looking to enjoy the lifestyle and charm of Leigh-on-Sea.

- Two bedroom first floor flat
- Allocated parking to the rear of the property
- Communal rear garden
- Large bay-fronted lounge/diner
- Modern fully fitted kitchen
- Three-piece bathroom
- Close to Westcliff Station for London commuters
- Moments from Chalkwell Park
- Walking distance to Leigh Broadway and Leigh Road shopping facilities
- Share of freehold

Nelson Road

Leigh-on-Sea

£260,000

Price Guide



Nelson Road



Frontage

Brick wall perimeter, access to the allocated parking to the rear of the property, door to:

Communal Entrance

Smooth ceiling with a pendant light, communal entrance door to the front, carpet, radiator, carpeted stairs rising to the first-floor landing.

First Floor Landing

Smooth ceiling with a pendant light, radiator, carpet, door to:

Entrance Hallway

Smooth ceiling with inset spotlights, loft access, inset storage cupboards, carpet, doors to all rooms.

Bay-Fronted Lounge/Diner

16'4" into the bay x 14'0"

Coved ceiling with a pendant light, double-glazed bay window to the front, space for a large sofa, space for a dining table, radiator, carpet.

Kitchen

9'1" x 8'11"

Smooth ceiling with inset spotlights, double-glazed window to the rear overlooking the communal garden. Modern kitchen comprising of; wall and base level units with a roll edge laminate worktop, cupboard housing the boiler, space for a dishwasher, inset oven and grill with a four-ring gas hob and an extractor fan above, inset stainless steel sink and drainer with a chrome mixer tap, storage cupboards, Herringbone style wood effect laminate flooring.

Bedroom One

12'11" x 9'1"

Smooth coved ceiling with a pendant light, double-glazed window to the rear overlooking the communal garden, space for a floor-to-ceiling wardrobe, radiator, carpet.

Bedroom Two

9'1" x 7'4"

Smooth coved ceiling with a pendant light, double-glazed window to the rear overlooking the communal garden, space for a floor-to-ceiling wardrobe, radiator, carpet.

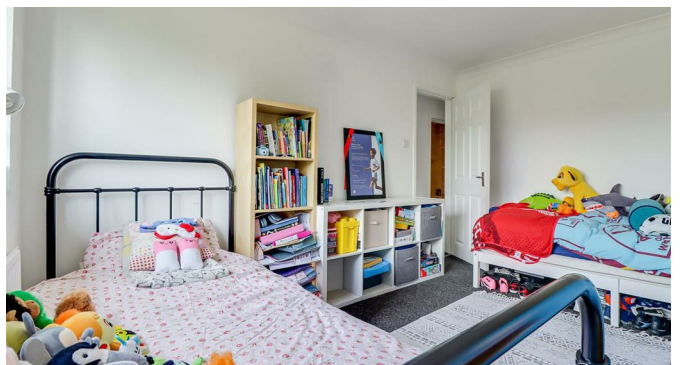
Bathroom

9'3" x 4'1"

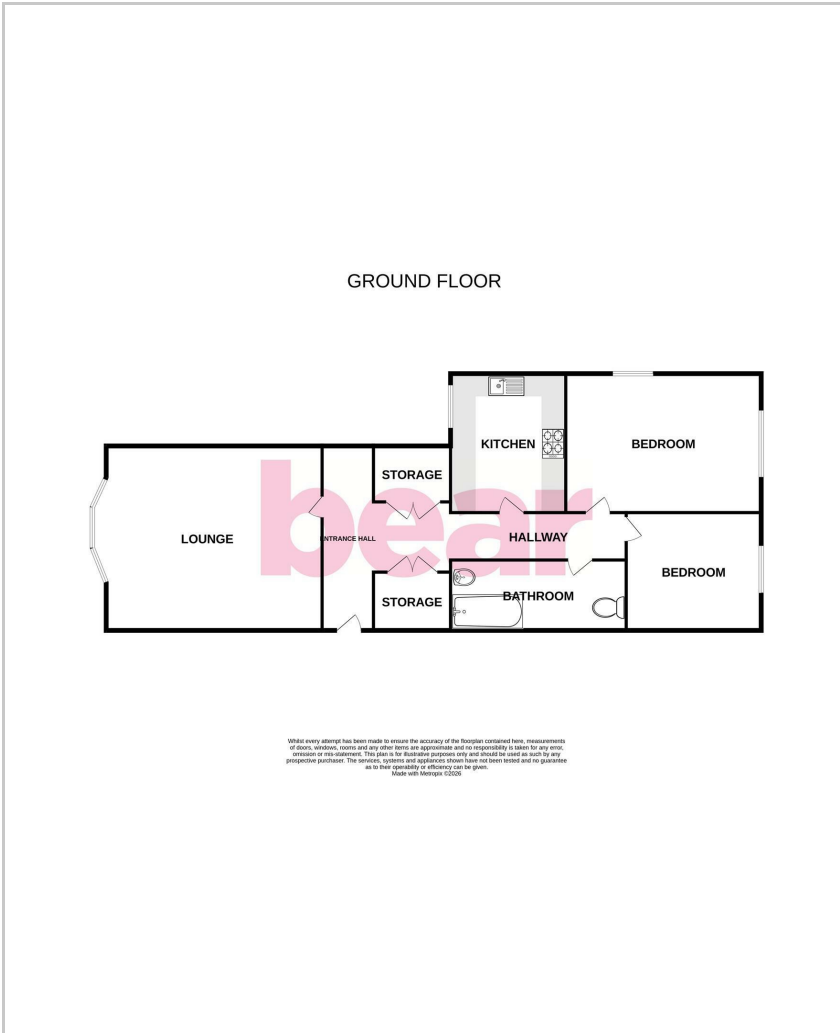
Smooth ceiling with inset spotlights, panelled bath with an electric power shower, low-level WC, vanity unit wash basin, wall-mounted chrome heated towel rail, fully tiled walls, tiled flooring.

Externally

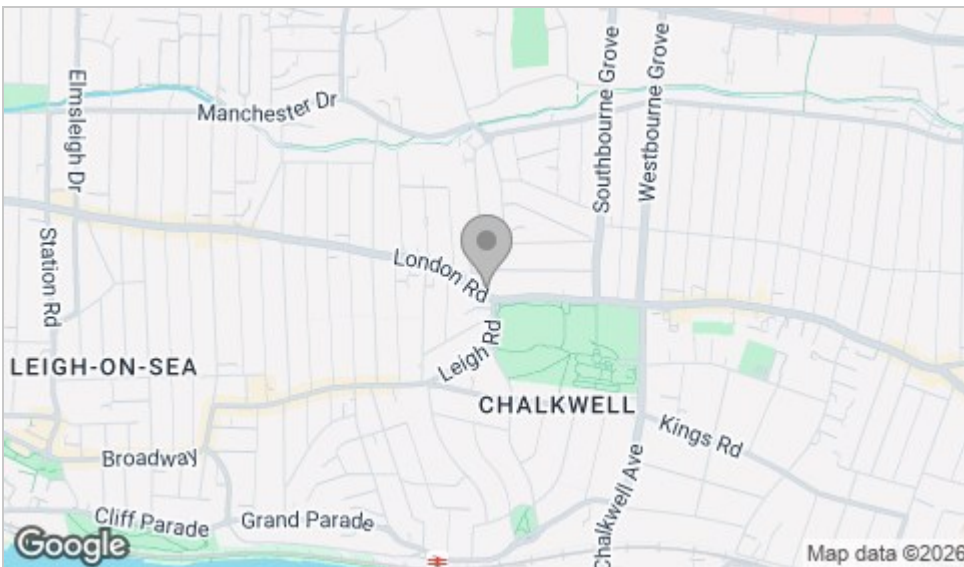
Communal garden to the rear, allocated parking for one vehicle.



Floor Plan



Area Map



Viewing

Please contact our Leigh-on-Sea Office on 01702 887 496 if you wish to arrange a viewing appointment for this property or require further information.

These particulars, whilst believed to be accurate are set out as a general outline only for guidance and do not constitute any part of an offer or contract. Intending purchasers should not rely on them as statements of representation of fact, but must satisfy themselves by inspection or otherwise as to their accuracy. No person in this firm's employment has the authority to make or give any representation or warranty in respect of the property.

1336 London Road, Leigh-on-Sea, Essex, SS9 2UH

Office: 01702 887 496 los@bearestateagents.co.uk <http://www.bearestateagents.co.uk/>

Energy Efficiency Graph

