



Asking Price £220,000
Southampton, SO19



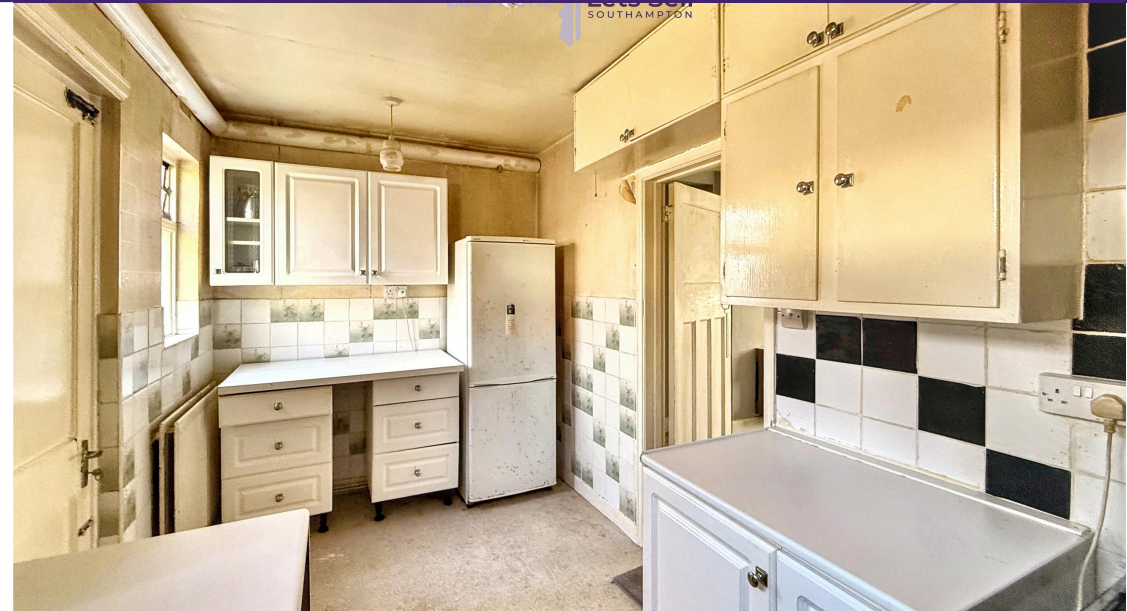
Lets Rent Lets Sell
SOUTHAMPTON

 2
Bedrooms

 1
Bathroom

15 London Road Southampton SO152AE |
enquiries@letsrentsouthampton.co.uk

02380 434448



Welcome to Poplar Road! Offered to the market with exciting potential, this two-bedroom semi-detached home on Poplar Road presents the perfect opportunity for those eager to put their own stamp on a property. While in need of comprehensive modernisation throughout, the house boasts a wealth of possibilities for transformation and extension (subject to the necessary planning consents), making it an ideal choice for buyers with creativity and vision.

Offered to the market for the first time in years, this two-bedroom semi-detached home located on Poplar Road, Southampton, presents an exceptional prospect for buyers seeking a property brimming with potential. Perfectly positioned in the popular SO19 postcode, this home is an ideal blank canvas for those ready to put their own stamp on a well-connected residential area.

Set behind a generous front garden with space to accommodate up to three cars, the property boasts practical off-road parking—an increasingly rare find. Once inside, the accommodation is spread over two floors. The ground floor comprises a welcoming entrance hall leading into a spacious reception room, a separate kitchen, and wc. Upstairs, two generously proportioned double bedrooms provide comfortable living space, accompanied by family bathroom. Outside, an established garden awaits transformation and development, making it a perfect spot for summer relaxation or family gatherings, aslo benefits from deatched garage.

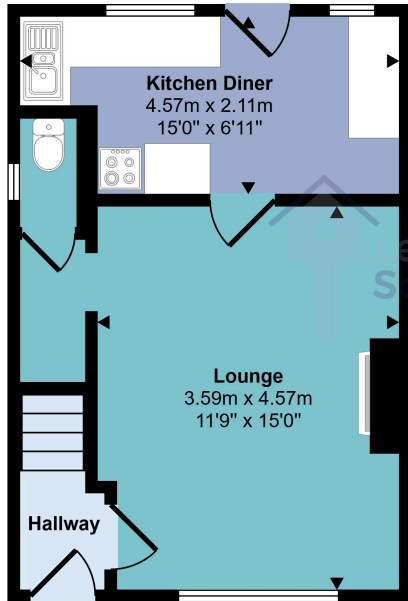
For those with vision, the property offers ample scope for both renovation and extension (subject to the necessary permissions), allowing you to transform it into your dream family home, tailored exactly to your tastes and needs.

The location could not be more convenient, with a wide range of amenities close by. Local schools and excellent transport links—including access to the wider motorway network—make this an outstanding choice for commuters and families alike. Just moments away, you'll find Peartree Green, renowned for its open green spaces—ideal for walking, running, or simply unwinding. Within comfortable walking distance are Bitterne Precinct, Sainsbury's for all your daily essentials, and popular fitness facilities such as PureGym and JD Gym.

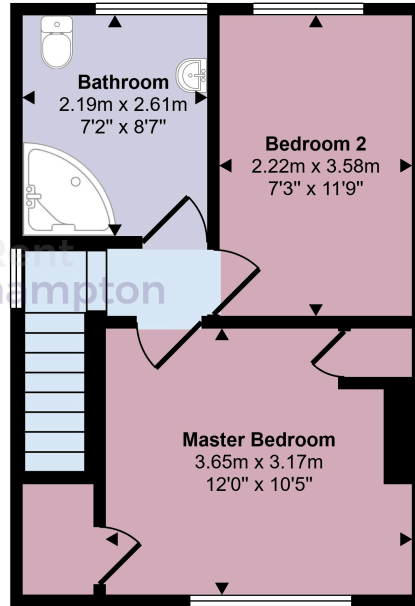
This property not only represents a potential-filled home in need of modernisation but also boasts an outstanding location at the heart of a family-oriented community with everything you need right on your doorstep.

Opportunities like this are rare—contact today to arrange your viewing and let your imagination take flight in this promising Southampton home.

Approx Gross Internal Area
63 sq m / 676 sq ft



Ground Floor
Approx 31 sq m / 335 sq ft



First Floor
Approx 32 sq m / 341 sq ft

This floorplan is only for illustrative purposes and is not to scale. Measurements of rooms, doors, windows, and any items are approximate and no responsibility is taken for any error, omission or mis-statement. Icons of items such as bathroom suites are representations only and may not look like the real items. Made with Made Snappy 360.

Energy Efficiency Rating		
	Current	Potential
Very energy efficient - lower running costs		
(92+) A		
(81-91) B		
(69-80) C		80
(55-68) D		
(39-54) E	46	
(21-38) F		
(1-20) G		
Not energy efficient - higher running costs		
England, Scotland & Wales		EU Directive 2002/91/EC

Address: Southampton, SO19

