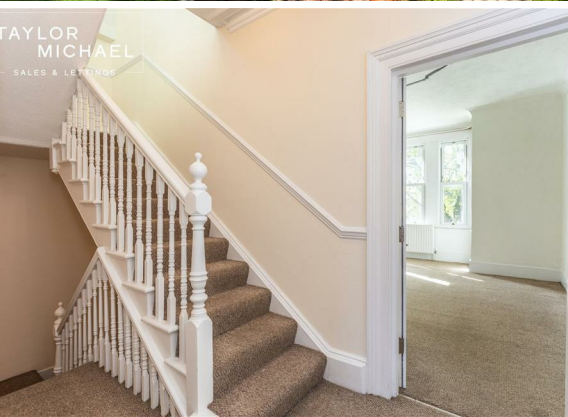




TAYLOR  
MICHAEL  
SALES & LETTINGS

3 Bed  
Maisonette  
located in

£1,850 Per month



TAYLOR  
MICHAEL

# New Church Road, Hove, BN3 4EE

Approximate Gross Internal Area = 117.4 sq m / 1264 sq ft



DIRECTIONS

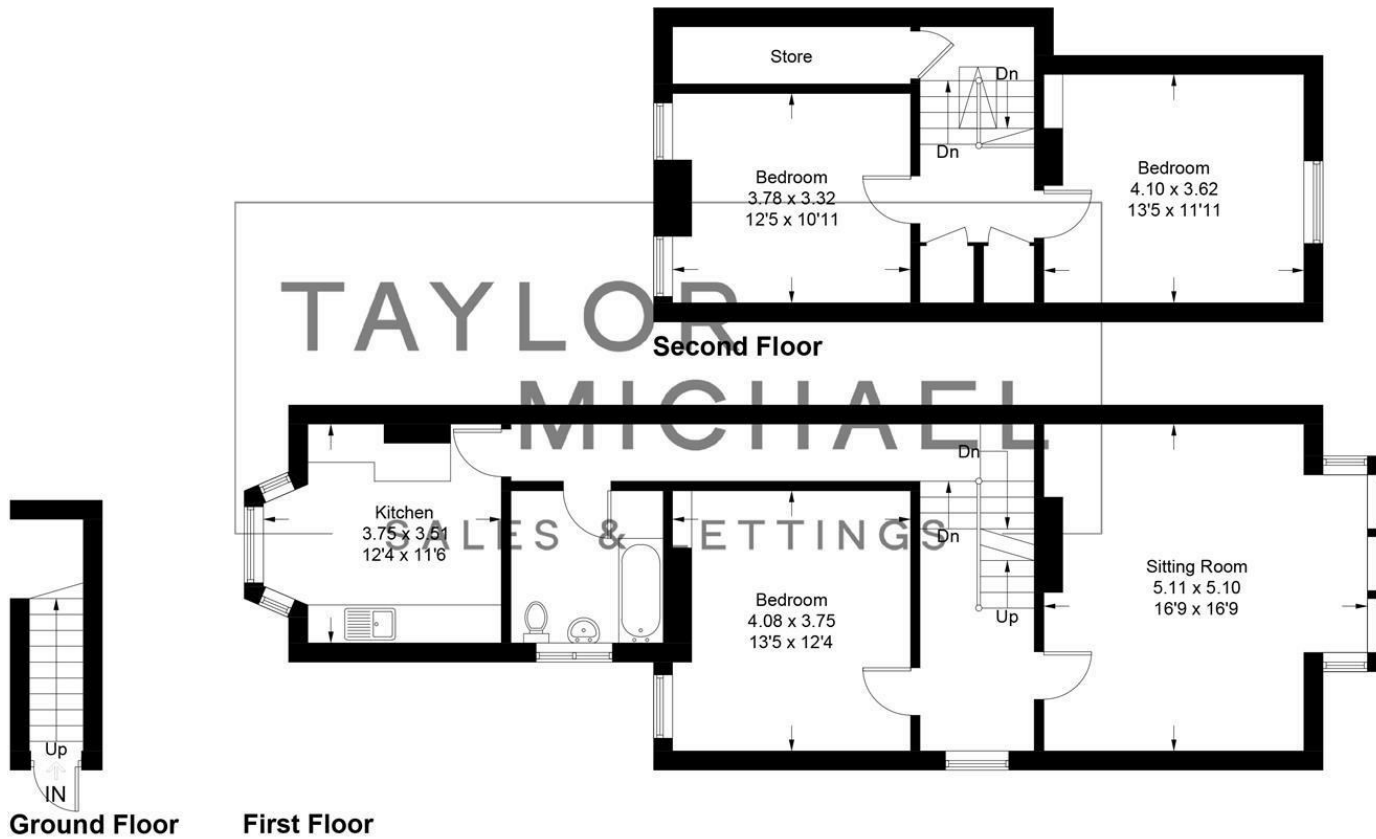


Illustration for identification purposes only, measurements are approximate, not to scale.  
Imageplansurveys @ 2026

Energy Efficiency Rating		Current	Potential
Very energy efficient - lower running costs			
(92 plus)	A		
(81-91)	B		
(69-80)	C	69	73
(55-68)	D		
(39-54)	E		
(21-38)	F		
(1-20)	G		
Not energy efficient - higher running costs			
England & Wales		EU Directive 2002/91/EC	

## CONTACT

62 Church Road  
Hove  
East Sussex  
BN3 2FP

E: [lettings@taylormichael.agency](mailto:lettings@taylormichael.agency)  
T: 01273 600100  
<https://taylormichael.agency/>

TAYLOR  
MICHAEL