



Chilworth Street, W2

£925,000

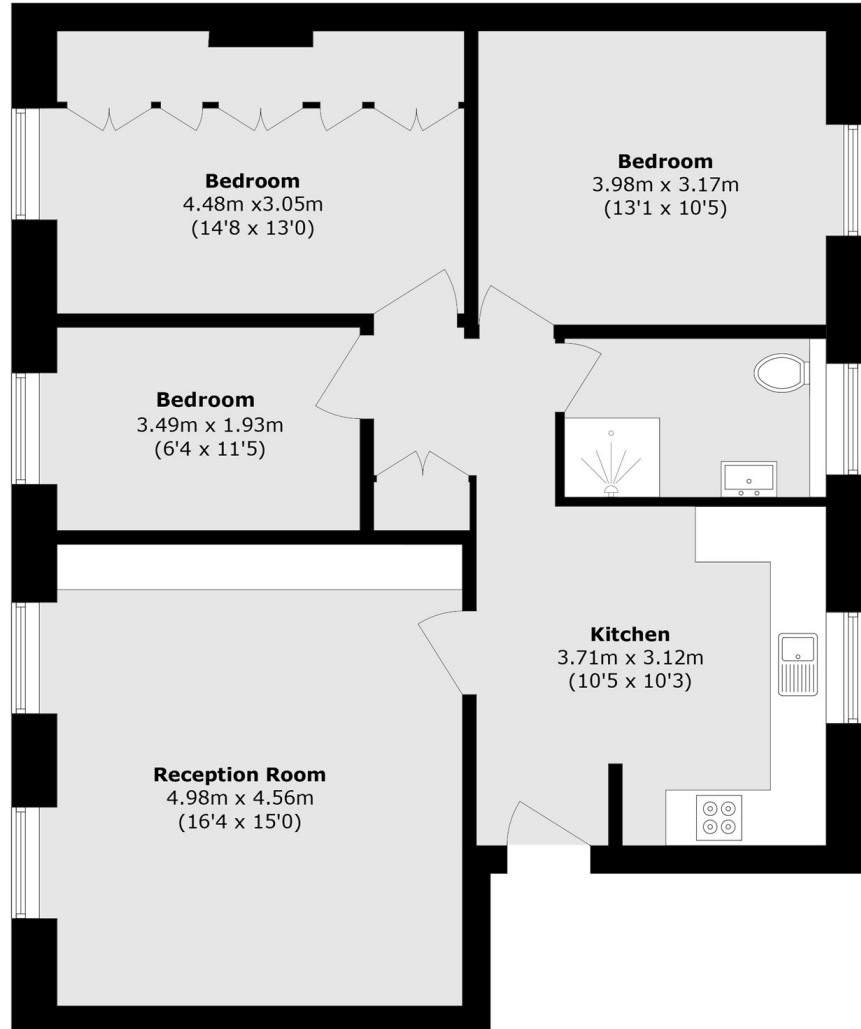
A three bedroom apartment on the top floor of a white stucco fronted Victorian conversion. The lateral apartment has a spacious reception, separate kitchen and built in storage in the principal bedroom.

Ideally located a stone's throw from Paddington station giving ideal access across and out of London. With plenty of local shops, restaurants and pubs to choose from and the green spaces of Hyde Park close by.

Features

- Share of Freehold
- Three Bedrooms
- Separate Kitchen
- Spacious Reception
- White Stucco Fronted
- Paddington

Chilworth Street, London, W2



Total area (approx.): 80.7 sq. m (868.6 sq. ft)