

76 Hatch Lane

West Drayton • • UB7 0BA

PCM: £1,900 PCM



coopers
est 1986

A well presented and spacious three bedroom terraced house to rent located within easy access to Heathrow Airport and the M4/M25 Motorways. Local amenities are also nearby and the property provides great transport links via bus routes.

Features include three bedrooms, spacious lounge and dining area, kitchen with utility room, family bathroom, private rear garden and gas central heating.

Unfurnished and available Now

Three Bedroom House

Semi Detached

Dining Area

Spacious Lounge

Newly Refurbished

Large Garden

Bus Routes

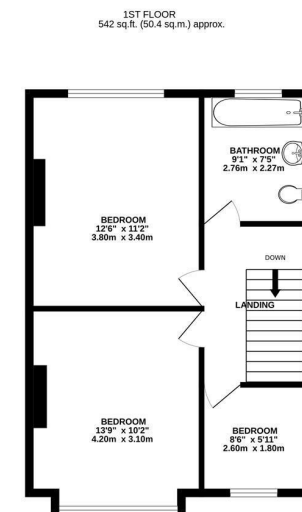
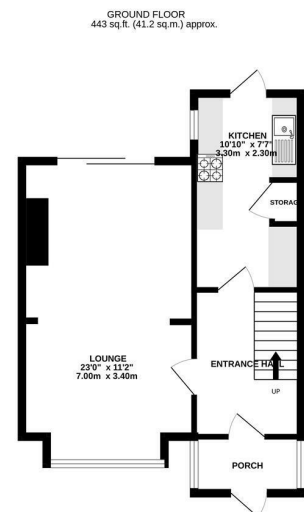
Heathrow Airport

Neabry to Local Amenities

Unfurnished

Available Date

14th February 2026



TOTAL FLOOR AREA: 986 sq.ft. (91.6 sq.m.) approx.
Whilst every attempt has been made to ensure the accuracy of the floorplan contained here, measurements of doors, windows, rooms and any other items are approximate and no responsibility is taken for any error, omission or mis-statement. This plan is for guidance purposes only and should be used as such by any prospective purchaser. The services, systems and appliances shown here have not been tested and no guarantee as to their operability or efficiency can be given.
Made with floorplan 02026



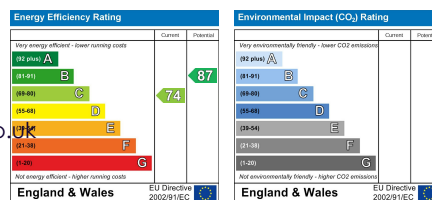
coopers
est 1986

01895 257 566

**1 Vine Street, Uxbridge,
Middlesex, UB8 1QE**

propertymanagement@coopersresidential.co.uk

CoopersResidential.co.uk



Important Notice: These particulars, whilst believed to be accurate are set out as a general outline only for guidance and do not constitute any part of an offer or contract. Intending purchasers should not rely on them as statements or representation of fact, but must satisfy themselves by inspection or otherwise has the authority to make or give any representation or warranty in respect of the property.