



9 Millbank Quarter, London, SW1P

£6,900 pcm

- Available end July 2026
- Duplex Apartment
- 2 bedrooms
- 3 bathrooms
- Spacious dining area
- 1,389 sq ft
- Prestigious location,
- Luxury residents' facilities
- 24-hour concierge
- Great transport links

This beautifully designed duplex apartment sits within the prestigious 9 Millbank development on the banks of the River Thames. Available end of July 2026

Spanning an extremely spacious 1,389 square feet, the ground floor features a very large open-plan kitchen, dining, and living room. This level also includes a practical utility room and a bathroom. The second-floor hosts two large en-suite bedrooms. The master bedroom boasts a spacious walk-in wardrobe.

Residents enjoy exclusive, excellent amenities. These include a fully equipped gym, a swimming pool, a luxury spa with treatment rooms, a cinema room, and a 24-hour concierge. For maximum comfort, the property features underfloor heating throughout, alongside comfort cooling in all reception rooms and bedrooms.

Millbank offers a fantastic location near West End theatres, Knightsbridge shopping, and wonderful local restaurants. Excellent educational institutions are nearby. The property also benefits from superb transport links, located close to Westminster, Victoria, St James's Park, and Pimlico Underground and National Rail stations.





ONE LONDON

PROPERTY

9 Millbank, Westminster,
London SW1P

SIZE

1,389 sq ft

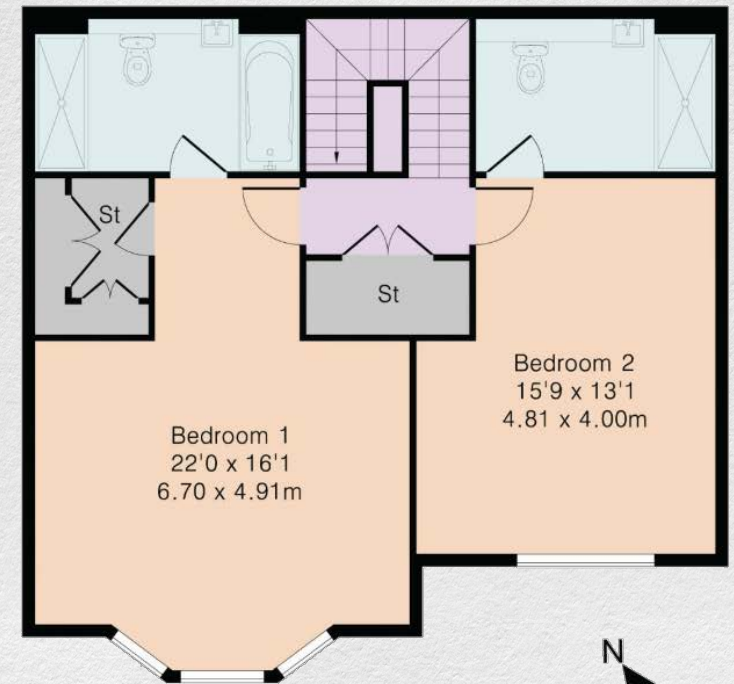
Two bedrooms / Three bathrooms

CONTACT

0207 856 0396
info@one-london.uk
www.one-london.uk



Ground Floor



Second Floor



WM011

** For illustration purposes only. Could not be to scale.
One-London aims to ensure accuracy but is not liable
for any discrepancies.