

616A Mumbles Road,
Mumbles, Swansea,
SA3 4EA

2

1

1



616A Mumbles Road, Mumbles, Swansea, SA3 4EA

Offers Over
£325,000

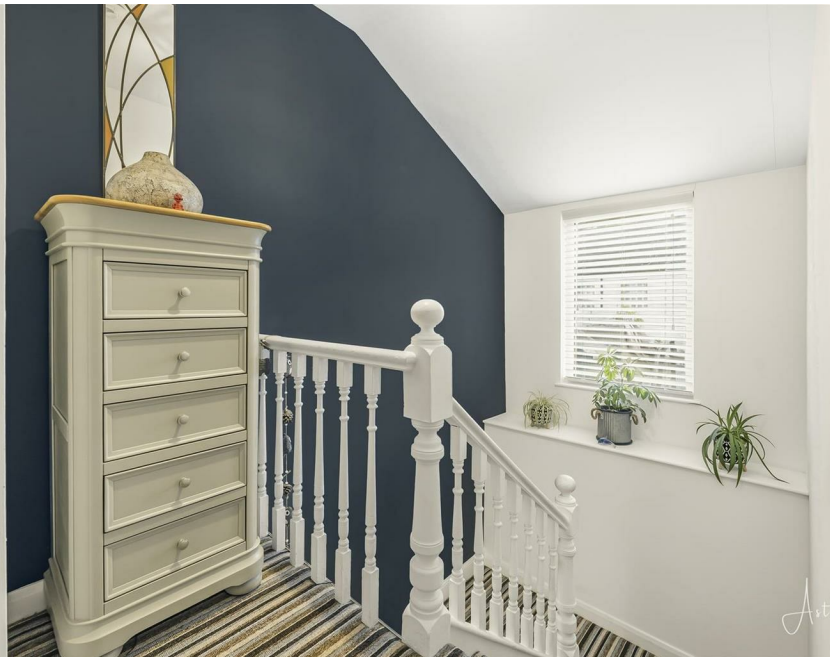
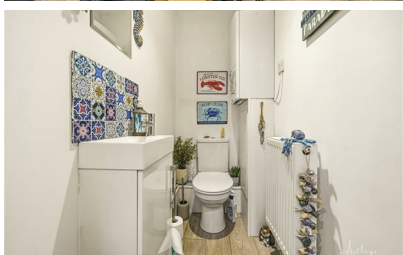


Attractive seafront maisonette located in the heart of Mumbles, offering direct access to the promenade and stunning views of Mumbles Lighthouse and Pier. Ideally positioned close to Verdi's Café, a wide range of restaurants, M&S, independent shops, and popular pubs. The property is surrounded by scenic coastal path walks, making it perfect for those seeking convenient village amenities combined with a prime waterfront setting.

Entrance from the rear of the property, in to a modern, stylish kitchen with central island and integrated appliances. The ground floor also comprises a separate dining area, spacious lounge, convenient cloak room and large storage cupboard/utility room.

Upstairs offers two spacious double bedrooms and a rooftop balcony area with potted plants and useful storage, enjoying attractive sea views over Mumbles Bay. The landing includes a generous storage cupboard, while the modern bathroom features a free-standing shower and heated towel rail.

Ideal for coastal-lifestyle professionals, downsizers or those seeking a charming retreat, this property offers character, comfort and an enviable seaside setting.



Entrance

Via PVC door into the kitchen.

Kitchen

10'4" x 11'0"

Well appointed kitchen fitted with a range of base and wall units, Running work surface incorporating a stainless steel sink. Bosch four ring electric hob. Integral oven & grill. Integral fridge/freezer. Central breakfast island. Radiator. Opening to the dining room.

Utility Room

3'1" x 6'3"

With plumbing for washing machine. Base and wall units.

Dining Room

11'9" x 10'7"

With an opening to the living room. Two radiators. Stairs to the first floor.

Lounge

16'4" x 12'5"

With a double glazed bay window to the front offering sea glimpses. Two radiators.

WC

3'1" x 5'7"

W/C. Wash hand basin. Radiator.

First Floor

Landing

With a double glazed window to the side. Door to cupboard. Doors to bedrooms. Door to the bathroom.

Bedroom One

12'0" x 10'4"

With a double glazed window to the front offering sea glimpses. Radiator.

Bedroom Two

12'0" x 10'4"

With a double glazed PVC leading out onto the rear balcony. Radiator.



Balcony

With room for tables and chairs.

Bathroom

8'7" x 5'8"

With a Velux roof window to the front. Suite comprising; corner shower cubicle. W/C. wash hand basin. Chrome heated towel rail. Tiled floor. Tiled walls.

External

Storage area.

Services

Mains electric. Mains sewerage. Mains water. Mains Gas. Broadband type - ultrafast fibre. Mobile phone coverage available with EE, Three, O2 & Vodafone.

Flooding from the sea

Risk between 0.5% and 3.3% chance each year.

Council Tax Band

TBC

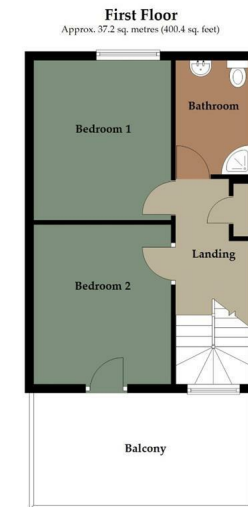
Tenure

TBC.





Energy Efficiency Rating		
	Current	Potential
<i>Very energy efficient - lower running costs</i>		
(92 plus) A		
(81-91) B		
(69-80) C		
(55-68) D		
(39-54) E		
(21-38) F		
(1-20) G		
<i>Not energy efficient - higher running costs</i>		
England & Wales	EU Directive 2002/91/EC	



Total area: approx. 93.5 sq. metres (1006.4 sq. feet)

Astleys use all reasonable endeavours to supply accurate property information in line with the consumer protection from unfair trading regulations 2008. These property details do not constitute any part of the offer or contract and all measurements are approximate. The matters in these particulars should be independently verified by prospective purchasers and it should not be assumed that property has all the necessary building regulations and planning permissions. Any heating, services and appliances have not been checked or tested. Floor plan is not to scale and is for illustrative purposes only.

Plan produced using PlanUz.