



Hatherley Grove, W2

£680 Per week

Dexters



Hatherley Grove, W2

This two double bedroom apartment is on the second floor of a well maintained period conversion, with wooden flooring and a separate kitchen.

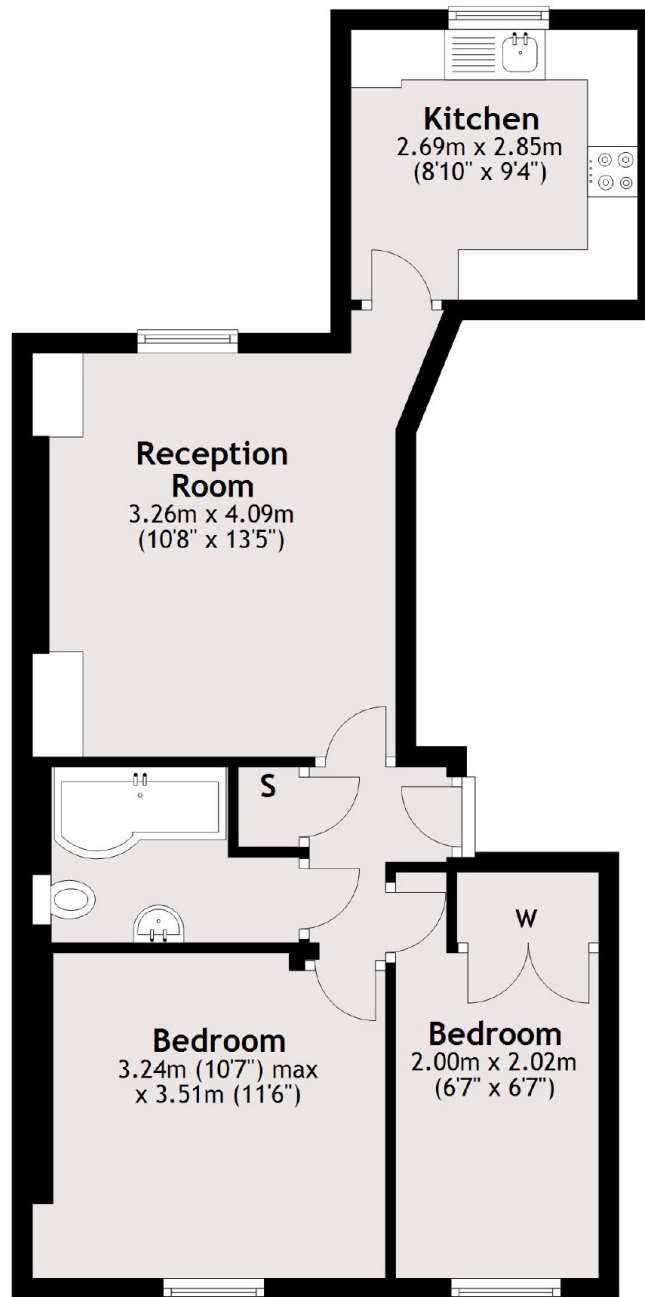
The property is close to the popular and vast array of restaurants and shops set on Westbourne Grove and Queensway, with Hyde Park also only a short walk away.

Features

- Two Bedrooms
- Modern Kitchen
- Recently Refurbished
- Siemens Kitchen Appliances
- Wood Flooring
- Second Floor Flat



Hatherley Grove, London, W2



Second Floor

Total area: approx. 50.1 sq. metres (539.6 sq. feet)

Dexters

Notting Hill
121-123 Notting Hill Gate
London
W11 3LB
Lettings
020 7792 0792

Energy Rating: C. We aim to make our particulars both accurate and reliable. However they are not guaranteed; nor do they form part of an offer or contract. If you require clarification on any points then please contact us, especially if you're traveling some distance to view. Please note that appliances and heating systems have not been tested and therefore no warranties can be given as to their good working order.

 **RICS** | Regulated
Estate Agent
and Letting Agent

dexters.co.uk