



Azof Street, SE10

£275,000

A well presented one bedroom ground floor purpose built flat in a sought after location which is offered to the market chain free. A viewing is highly recommended.

Azof street is a quiet residential street located a short walk from Maze Hill Mainline Station providing direct links to London Bridge, Cannon Street and St Pancras. North Greenwich (Jubilee Line), Cutty Sark (DLR) and Greenwich Pier (Uber Boats) are also nearby. The Thames Path is very close and Greenwich Park, National Maritime Museum, Royal Observatory, Royal Naval College and the O2 are located nearby. There are an array of local shops, restaurants and cafés along Trafalgar Road and the river path for residents to enjoy while larger supermarkets are also within easy reach. A number of popular nurseries and schools for families are also in the local vicinity.

Features

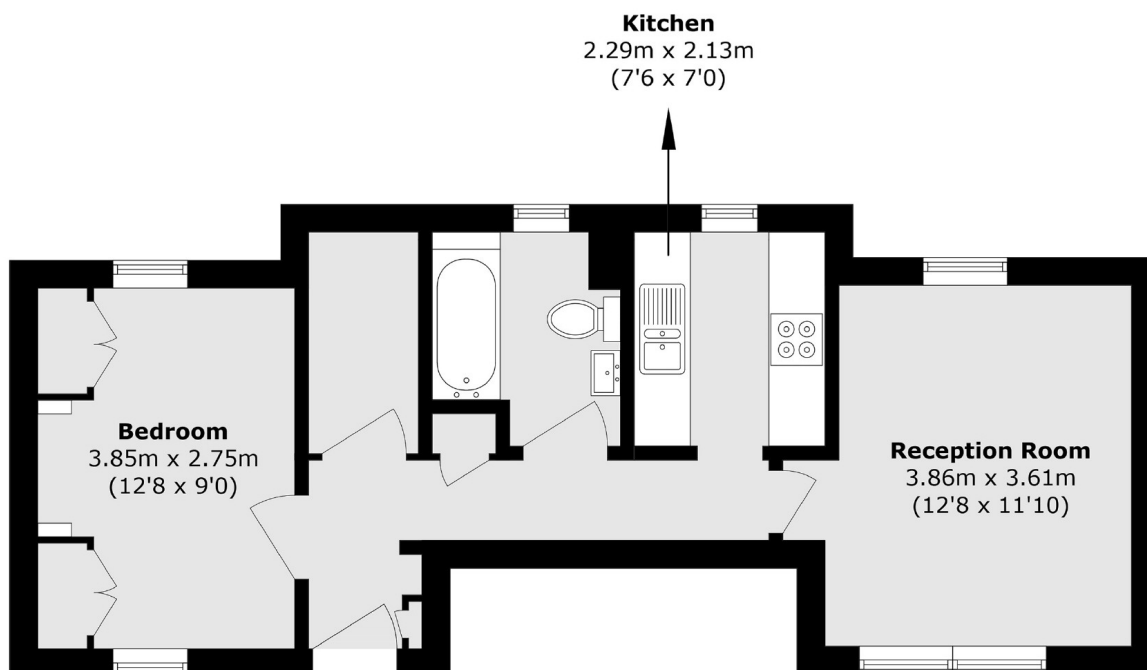
- Ground Floor Flat
- Gated Development
- Sought After Location
- Ideal First Purchase
- Chain Free
- Leasehold



Azof Street, SE10



Azof Street,
London, SE10



Total area (approx.): 43.5 sq. m (468.2 sq. ft)