

Red Cedars Road

BR6 0BX



***** CHAIN FREE SALE*****

Offering a blank canvas for its new owners, this three-bedroom home on Red Cedars Road in Orpington presents an excellent opportunity for first-time buyers or growing families seeking a property to personalise.

Upon entering, you are greeted by well-proportioned living spaces configured to offer flexibility. The property currently features reception room, kitchen and bedroom to the ground floor, with a further three bedrooms and family bathroom found to the first floor. This home provides ample space for comfortable living and allows for creative interior design to truly make it your own.

Outside, the property benefits from convenient off-street parking to the front. To the rear, a charming garden awaits, offering a private outdoor space perfect for relaxation, entertaining, or various outdoor activities. This low-maintenance garden provides a peaceful retreat from the everyday.

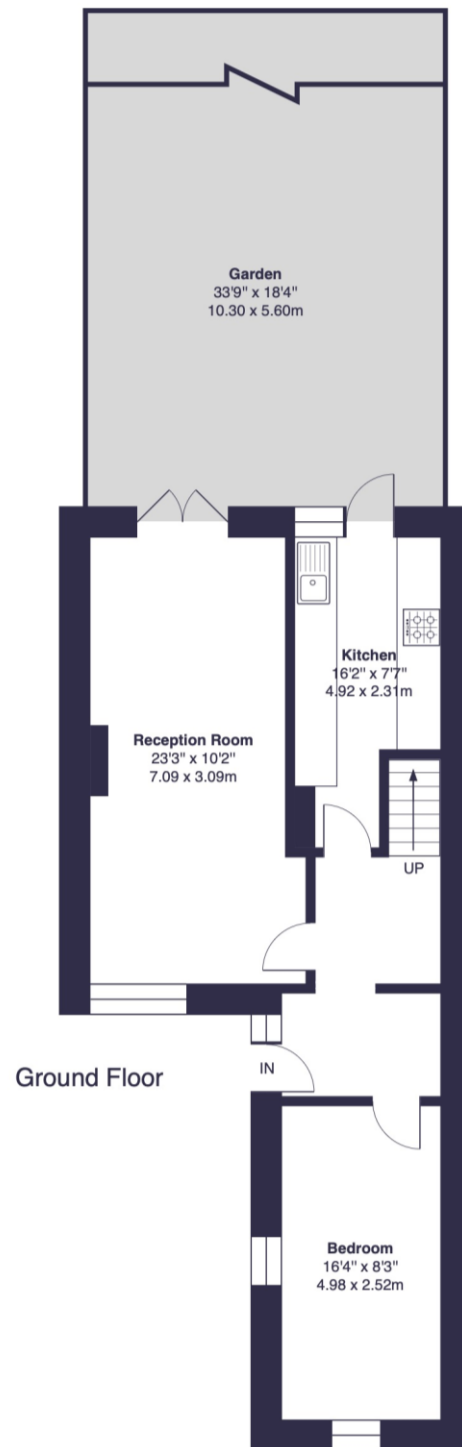
Red Cedars Road is ideally situated, offering easy access to both Petts Wood and Orpington Railway Stations, making commuting straightforward. Orpington High Street is just a five-minute drive away, providing a wide array of shops, eateries, and leisure facilities. This chain-free sale offers a smooth transition for new owners looking to settle into a well-connected and desirable area.



Key Features:

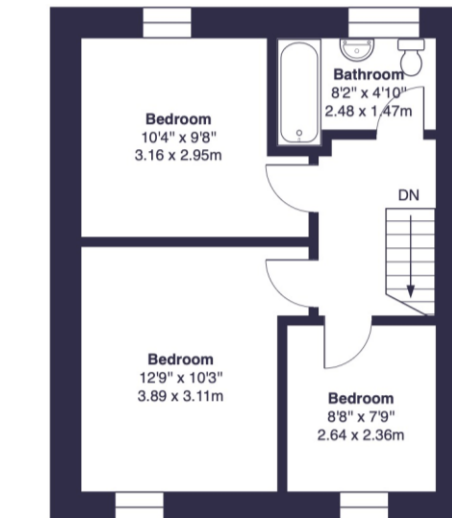
- ❑ Chain Free Sale
- ❑ Three/Four Bedroom Home
- ❑ Complete Blank Canvas
- ❑ Off Street Parking
- ❑ Charming Garden To Rear
- ❑ Within Easy Reach Of Both Petts Wood & Orpington Railway Stations
- ❑ Five Minute Drive To Orpington High Street Shops, Eateries & Leisure Facilities
- ❑ Perfect For First Time Buyers
- ❑ Ideal For Growing Families
- ❑ Council Tax Band D - London Borough Of Bromley





Red Cedars Road, BR6

Approximate Gross Internal Area:
1048 sq ft / 97.4 sq m



This plan is for layout guidance only and not drawn to scale unless stated. Window and door openings are approximate. Whilst every care is taken in the preparation of this plan, we would advise interested parties to check all dimensions, shapes and compass bearings prior to making any decisions reliant upon them. No liability is accepted for any errors. By www.Prime Square Photography.com / Copyright 2026

EPC: D

COUNCIL TAX BAND: D

TENURE: Freehold

For more information on this property or to arrange a viewing please call the office on

0208 859 8590

Alternatively, you can scan below to view all of the details of the property online.



352 Footscray Road
New Eltham
London
SE9 2EB