

Stour Street
Canterbury
CT1 2NR

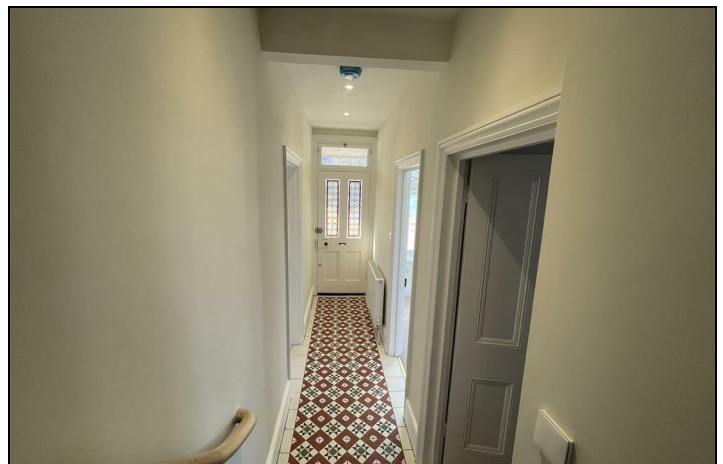
£1,800 Per Month

Finn's
82 Castle Street
Canterbury
CT1 2QD
t: 01227 452111
e: canterbury@finns.co.uk
www.finns.co.uk



A beautifully 2/3 bedroom house in the centre of Canterbury. This charming property has been meticulously refurbished to cherish some of its original charm along with modern, practical features. High ceilings, solid wood doors and attractive original fireplaces are a few of the properties original features. A sleek modern kitchen, utility room and bathroom brings this property into the modern age without detracting from its heritage. The house is set over three floors with the kitchen, utility room, lounge, office and WC on the ground floor, the second floor offers to double bedrooms and a bathroom and third floor has an attic room perfect as a bedroom, office or dressing room. The property has its own cottage style garden set on the banks of the river Stour and one parking space in a gated parking area. The property benefits from gas central heating system. The property is within easy walking distance to Canterbury East and West railway stations, the Marlowe Theatre, Canterbury Cathedral and many of Canterbury's highly acclaimed Schools and Universities.

- 2/3 Bedroom House in Centre of Canterbury
- Original Features
- Beautifully restored
- Modern kitchen with high end appliances
- Utility Room
- Cottage Style Garden
- One gated parking space
- Gas Central Heating
- EPC Band D Deposit £2075.00 Council Tax Band D
- Available now



Energy Efficiency Rating		
	Current	Potential
Very energy efficient - lower running costs		
(92 plus) A		
(81-91) B		84
(69-80) C	71	
(55-68) D		
(39-54) E		
(21-38) F		
(1-20) G		
Not energy efficient - higher running costs		
England & Wales	EU Directive 2002/91/EC	

Viewing: By appointment through Finn's, Canterbury
Telephone: 01227 452111

Council Tax: D

Date: These particulars were prepared on: 2nd June 2026

Agent's Note: Wherever appliances or services, fixtures or fittings have been mentioned in these particulars they have not been tested by us. Measurements should not be relied upon. Unless specifically referred to above all fitted carpets, curtains, fixtures and fittings and garden outbuildings and ornaments are excluded from the sale. None of the statements in these particulars are to be relied upon as statements or representatives of fact. Photographs are for guidance only and do not imply items shown are included in the sale - some aspects may have changed since they were taken. No person in the employment of Finn's has authority to give any representation or warranty in relation to this property.

FINN'S CANTERBURY
82 Castle Street
Canterbury
Kent CT1 2QD
Lettings: 01227 452111

FINN'S SANDWICH
2 Market Street
Sandwich
Kent CT13 9DA
Lettings: 01304 614471

FINN'S ST NICHOLAS AT WADE
The Packhouse
Wantsum Way
St Nicholas at Wade
Kent CT7 0NE
01843 848320

