

# DENBIGH TERRACE







## Denbigh Terrace, W11

This elegant Victorian Notting Hill townhouse is perfectly positioned on this vibrant street between Portobello Road and Westbourne Grove, allowing easy access to the boutiques and cafes of Westbourne Grove. Arranged over four floors the property comprises of a double reception room overlooking a dramatic double-height kitchen/family room. There is a large principal bedroom suite, two further bedrooms, an additional family bathroom and a lovely landscaped rear garden. Denbigh Terrace is located close to the famous market and within close proximity to Notting Hill Gate underground station for the Central, Circle and District lines. The open spaces of Kensington Gardens are also nearby.













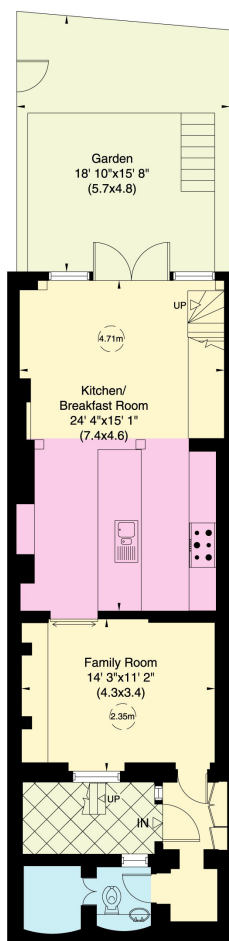




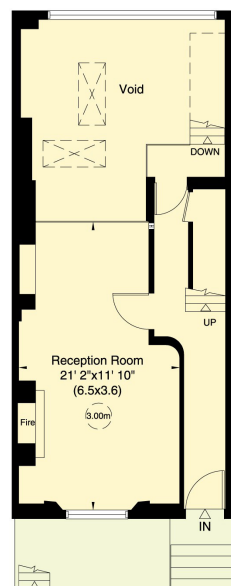




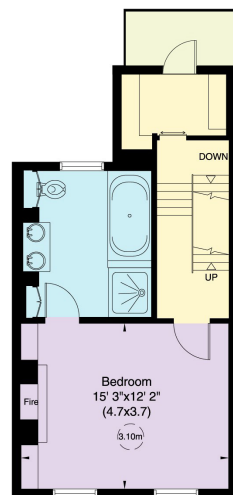




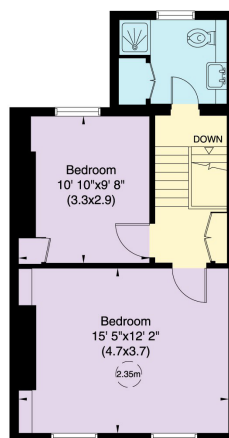
Lower Ground Floor



Ground Floor



First Floor



Second Floor

Approx. Gross Internal Area  
= 168 sq m / 1811 sq ft (Excluding Void)



## Denbigh Terrace, W11 - Freehold

Local Authority - **Royal Borough of Kensington & Chelsea**

- Three bedrooms
- Two bathrooms
- Family home
- Private garden
- Council Tax Band: H
- EPC Rating: D



Whilst every attempt has been made to ensure the accuracy of the floor plan, measurements are approximate and not to scale. No guarantee is given on the total square footage of the property quoted on the plan. Figures given are for guidance. Plan is for illustration purposes only, not to be used for valuations.

### LONDON OFFICES

Notting Hill • Kensington • North Kensington 020 8960 0181

[mountgrangeheritage.co.uk](https://mountgrangeheritage.co.uk)

[hello@mountgrangeheritage.co.uk](mailto:hello@mountgrangeheritage.co.uk)



**MOUNTGRANGE**  
HERITAGE