



White Hart Lane

Barnes, SW13

£4,500 per month
(£1,038.46 per week)

A spacious terraced house, near Barnes Bridge Station and the river Thames, in Little Chelsea. The property offers balanced accommodation arranged over four floors.

On the lower floors, there is a double reception room which is flooded with natural light from both ends and boasts wood floors. The kitchen and dining room is spacious and opens onto a charming rear garden and there is an excellent media/family room. Upstairs, are four generous bedrooms with built-in wardrobes and two contemporary and stylish bathrooms.

White Hart Lane is a desirable Barnes location offering proximity to public transport, the Thames towpath and the array of local boutiques and eateries, including Rick Stein and the renowned White Hart public house.

CHESTERTONS



White Hart Lane

Barnes, SW13

- Attractive Terraced House
- Well-Presented Throughout
- Charming Rear Garden
- 'Little Chelsea' Location
- Near Barnes Bridge Station



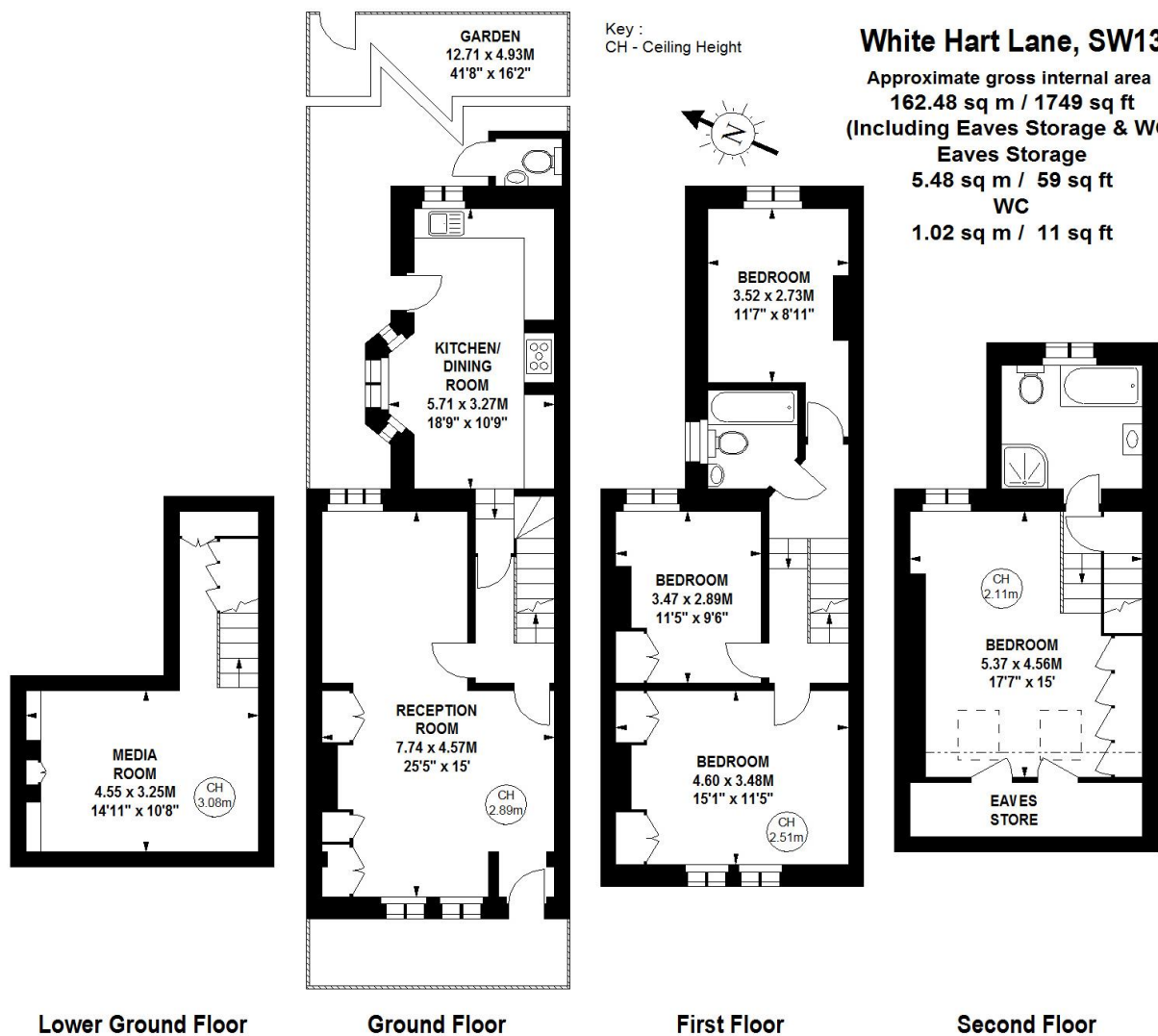
Minimum Term: 12 months
Deposit Required: six weeks rent (£5,192.31)
Local Authority: London Borough of Richmond upon Thames
Council Tax Band: F
EPC Rating: E
Unfurnished

Energy Efficiency Rating		
	Current	Potential
Very energy efficient - lower running costs		
(92+) A		
(81-91) B		
(69-80) C		72
(55-68) D		
(39-54) E	45	
(21-38) F		
(1-20) G		
Not energy efficient - higher running costs		
England, Scotland & Wales EU Directive 2002/91/EC		

Chestertons Barnes Lettings

68-69 Barnes High Street
 Barnes
 London
 SW13 9LD
 Lettings.barnes@chestertons.co.uk
 020 8748 7733
[chestertons.co.uk](https://www.chestertons.co.uk)

Additional tenant charges apply (fees apply to non-AST tenancies only)
 Tenancy Agreement Fee: £300
 References per Tenant/Guarantor: £60
 Inventory Check: Approx. £100-£250 (inc. VAT)
[chestertons.co.uk/property-to-rent/applicable-fees](https://www.chestertons.co.uk/property-to-rent/applicable-fees)



The floor plan is not to scale and measurements and areas shown are approximate and therefore should be used for illustrative purposes only. The plan has been prepared in accordance with the RICS code of Measuring Practice and whilst we have confidence in the information produced, it must not be relied on. If there is any aspect of particular importance, you should carry out or commission your own inspection of the property.
 Copyright of FeaturePRO.

