



Newstet Road | Knowsley Industrial Park | Kirkby | L33 7TJ

£3,000 Per Month

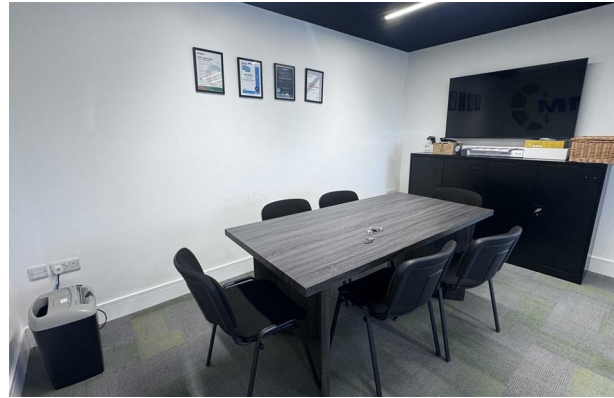


Newstet Road | Knowsley Industrial Park Kirkby | L33 7TJ

Nestled within the bustling Knowsley Industrial Park, this impressive commercial property on Newstet Road offers a large self-contained office space, ideal for businesses seeking a strategic location. The unit is designed to cater to a variety of commercial needs, providing ample room for operations while ensuring a professional environment.

The property benefits from its position within the well-established Knowsley Industrial Estate, which is known for its excellent transport links and accessibility. This makes it an attractive option for companies looking to enhance their operational efficiency and connectivity.

- Large self-contained unit
- Ideal for office space
- Ask for more information
- Convenient Kirkby location
- Perfect for businesses
- Located in Knowsley Industrial
- Commercial property type
- Spacious interior layout
- Close to transport links
- Viewing recommended



Energy Efficiency Rating		
	Current	Potential
<i>Very energy efficient - lower running costs</i>		
(92 plus) A		
(81-91) B		
(69-80) C		
(55-68) D		
(39-54) E		
(21-38) F		
(1-20) G		
<i>Not energy efficient - higher running costs</i>		
England & Wales	EU Directive 2002/91/EC	

Council Tax
Band **Exempt**
EPC Rating

14 Park Brow Drive
Kirkby
Merseyside
L32 6QP
0151 289 8585
jodie@dorankennedy.co.uk