



[www.chrystals.co.im](http://www.chrystals.co.im)

9 Sunnybank Avenue, Onchan, IM3 3BW  
**Asking Price £579,950**

9 Sunnybank Avenue, Onchan, IM3 3BW

Asking Price £579,950

A delightful four bedroom detached bungalow situated in an elevated position with distant views of Douglas Bay, outer harbour, headland and hillside. The property is spacious with light and airy accommodation. Having recently been remodelled with a modern kitchen, two en-suite shower rooms and a family bathroom. The through lounge with dining area is of a generous size with large picture window affording a fine view, as does the sitting room. There is a large single garage with integral access and off road parking for several vehicles. To the rear is a fenced lawn garden, patio area and shed. No onward chain.



## **LOCATION**

From Glencrutchery Road turn left at Governors Bridge and head towards Sign Post Corner. At the roundabout turn right onto Hillberry Road. Turn left onto Highfield Crescent and follow the road around the bend taking the first left onto Sunnybank Avenue. Turn right and the property can be located on the right, clearly identified by our For Sale Board.

## **ENTRANCE VESTIBULE**

6' 11" x 6' 7" (2.1m x 2m)

uPVC double glazed entrance door.

## **HALL**

Radiator.

## **LOUNGE/DINER**

25' 3" x 15' 9" (7.7m x 4.8m)

Electric wall mounted fire. Two radiators. Large picture window looking towards Douglas Bay, Outer Harbour and headland, surrounding hills. Access to integral garage.

## **SITTING ROOM**

14' 9" x 12' 10" (4.5m x 3.9m)

Large picture window overlooking Douglas Bay, outer Harbour and headland and surrounding hills.

## **BREAKFAST KITCHEN**

18' 1" x 10' 2" (5.5m x 3.1m)

High gloss white units to base and wall level and laminate work. AEG microwave combination

oven and principal oven below. AEG split electric and gas induction hob with extractor hood above. Pull out larder cupboard. Splashback. Vinyl flooring. Radiator. Fitted table. uPVC double glazed door to outside. Skirting and down lighting.

## **BEDROOM WING**

Pull down loft ladder/hatch. Radiator.

### **BEDROOM 4**

10' 6" x 9' 10" (3.2m x 3m)

Radiator. Built-in double wardrobe.

### **BEDROOM 3**

10' 8" x 9' 2" (3.25m x 2.8m)

Radiator. Built-in double wardrobe.

### **ENSUITE SHOWER ROOM**

Shower cubicle, vanity wash hand basin and low level WC. Radiator. Half tiled walls.

### **BEDROOM 2**

9' 6" x 11' 10" (2.9m x 3.6m)

Radiator.

### **FAMILY BATHROOM**

Fully tiled walls and floor. Contemporary white suite comprising panelled bath, WC and vanity wash hand basin. Radiator. Aqualisa electric shower over bath with screen. Mirrored cabinet.

## **MASTER BEDROOM**

19' 8" x 15' 9" (6m x 4.8m)

2 radiators. Dual aspect room with views to Douglas Bay, outer Harbour and headland to surrounding hills. Coved ceiling. Fitted bedroom furniture comprising double wardrobe, 2 single cupboards, shelved cupboard and bedside drawer units, Overhead storage and walk-in cupboard housing Worcester gas fired central heating boiler, electric metre and fuse box. Power and light.

## **ENSUITE SHOWER ROOM**

Double shower cubicle, vanity wash hand basin and wall hung WC. Fully tiled walls and floor. Mirrored cabinet. Heated towel rail. Extractor vent.

## **GARAGE**

18' 1" x 13' 5" (5.5m x 4.1m)

Electric up and over door. Power and light.

## **OUTSIDE**

Driveway. Steps and path to front and rear. Patio and ample lawn. Shed. Fenced to rear.

## **SERVICES**

Mains water, electricity and drainage. Gas central heating.

## **VIEWING**

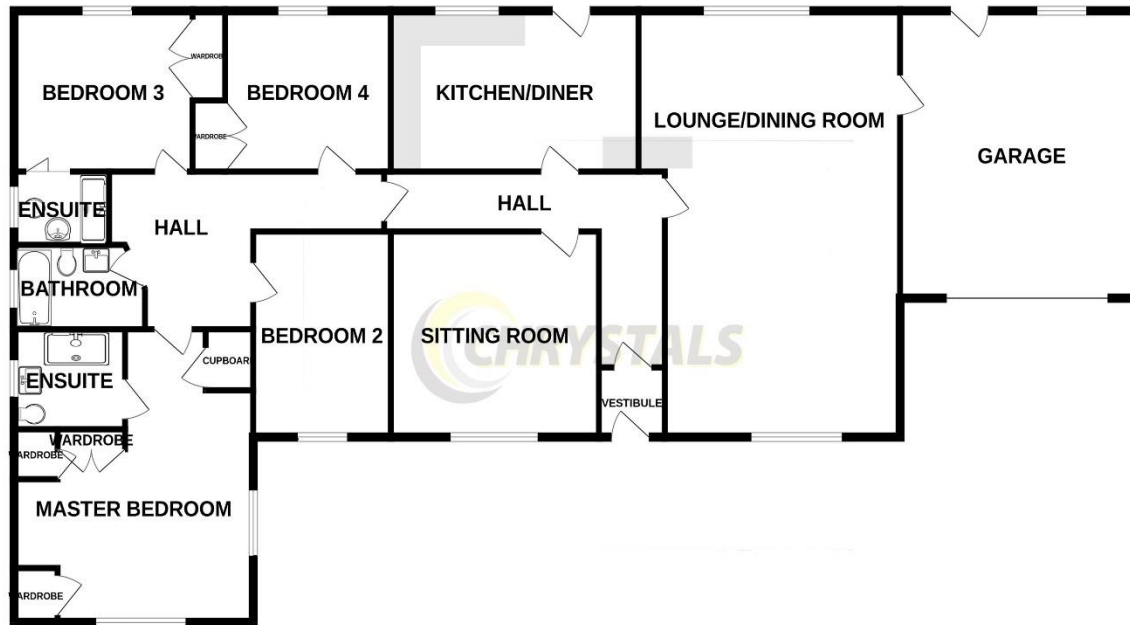
Viewing is strictly by appointment through CHRYSTALS. Please inform us if you are unable to keep appointments.

## **POSSESSION**

Vacant possession on completion of purchase. The company do not hold themselves responsible for any expenses which may be incurred in visiting the same should it prove unsuitable or have been let, sold or withdrawn. **DISCLAIMER** - Notice is hereby given that these particulars, although believed to be correct do not form part of an offer or a contract. Neither the Vendor nor Chrystals, nor any person in their employment, makes or has the authority to make any representation or warranty in relation to the property. The Agents whilst endeavouring to ensure complete accuracy, cannot accept liability for any error or errors in the particulars stated, and a prospective purchaser should rely upon his or her own enquiries and inspection. All Statements contained in these particulars as to this property are made without responsibility on the part of Chrystals or the vendors or lessors.







Measurements are approximate. Not to scale. Illustrative purposes only  
Made with Metropix ©2025

Since 1854



**DOUGLAS**  
31 Victoria Street  
Douglas IM1 2SE  
T. 01624 623778  
E. douglas@chrystals.co.im

**PORT ERIN**  
23 Station Road  
Port Erin IM9 6RA  
T. 01624 833903  
E. porterin@chrystals.co.im

**COMMERCIAL**  
Douglas Office: 01624 625100, commercial@chrystals.co.im

**RENTALS**  
Douglas Office: 01624 625300, douglasrentals@chrystals.co.im

Directors: Neil Taggart BSc (Hons), M.R.I.C.S.; Joney Kerruish BSc (Hons), M.R.I.C.S.; Dafydd Lewis BSc (Hons), M.R.I.C.S, MA (Cantab), Dip Surv Prac.  
Registered in the Isle of Man No. 34808, Chrystal Bros, Stott & Kerruish Ltd. Trading as Chrystals. Registered Office, 31 Victoria Street, Douglas, Isle of Man IM1 2SE.