



92 Caledonian Road | | London | NI 9DN

£3,190 Per month

ESON2
REAL ESTATE

Key features

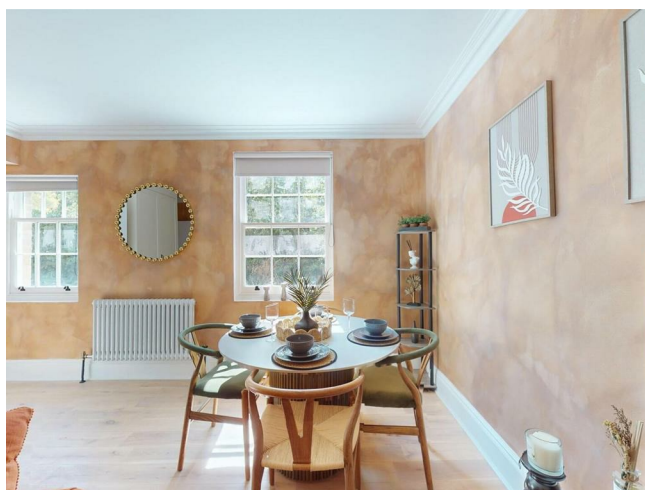
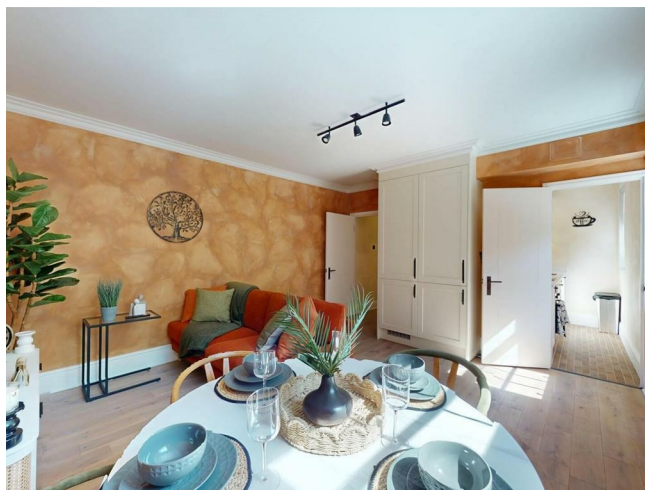
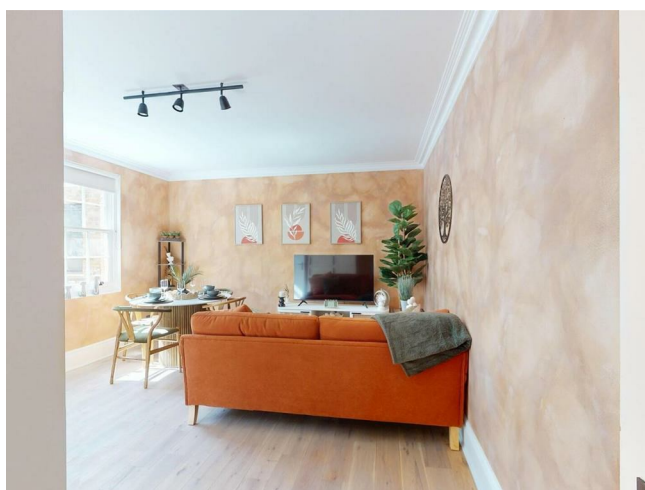
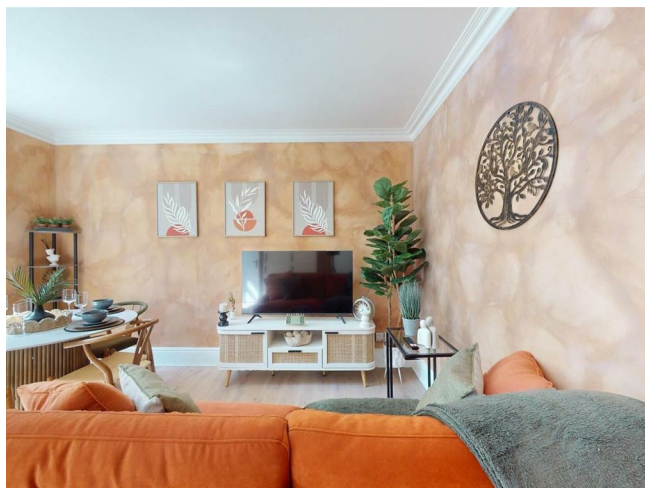
- Two bedroom flat
- Designer bathroom fittings
- Modern flat design
- Warm terracotta interiors
- Well-equipped galley kitchen
- Heart of vibrant Islington

Description

A beautifully styled 1-bedroom apartment in the heart of Islington, NI. Featuring warm terracotta living spaces, a designer bathroom with brushed gold fittings, and a well-equipped galley kitchen.

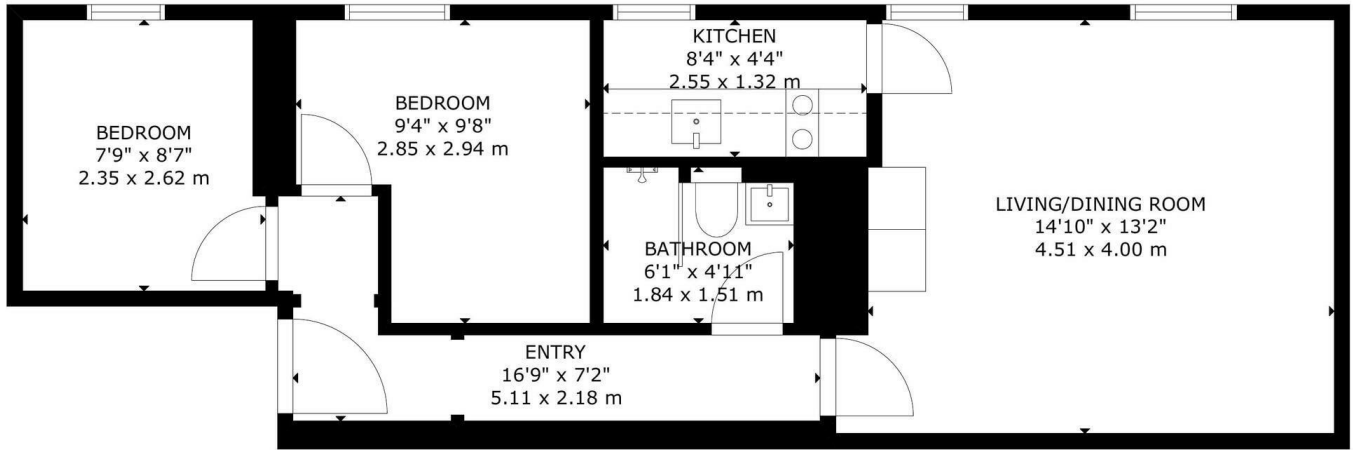
The double bedroom is calm and light-filled with a upholstered headboard, complemented by a second room perfect for guests or shares.

Directions



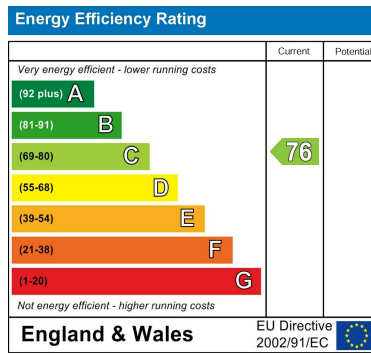


Floor plans



FIRST FLOOR

GROSS INTERNAL AREA
 TOTAL: 47 m²/501 sq ft
 FIRST FLOOR: 47 m²/501 sq ft
 SIZE AND DIMENSIONS ARE APPROXIMATE, ACTUAL MAY VARY



Council Tax Band D EPC Rating C



301 Michelin House 81 Fulham road
 London
 Greater London
 SW3 6RD
 07920 257649
 fayeel@eson2.co.uk
 www.eson2.co.uk