



RESIDE

—
MANCHESTER

A202 Railings 5 Shale Lane
Middlewood Locks, Salford, M5 4BU

£1,950 PCM



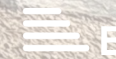
3



2



1



B

A202 Railings 5 Shale Lane

Middlewood Locks, Salford, M5 4BU

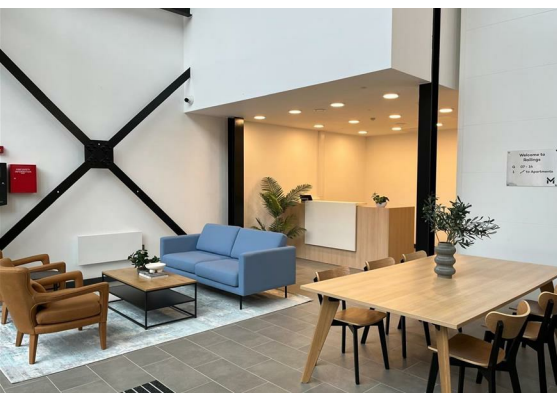
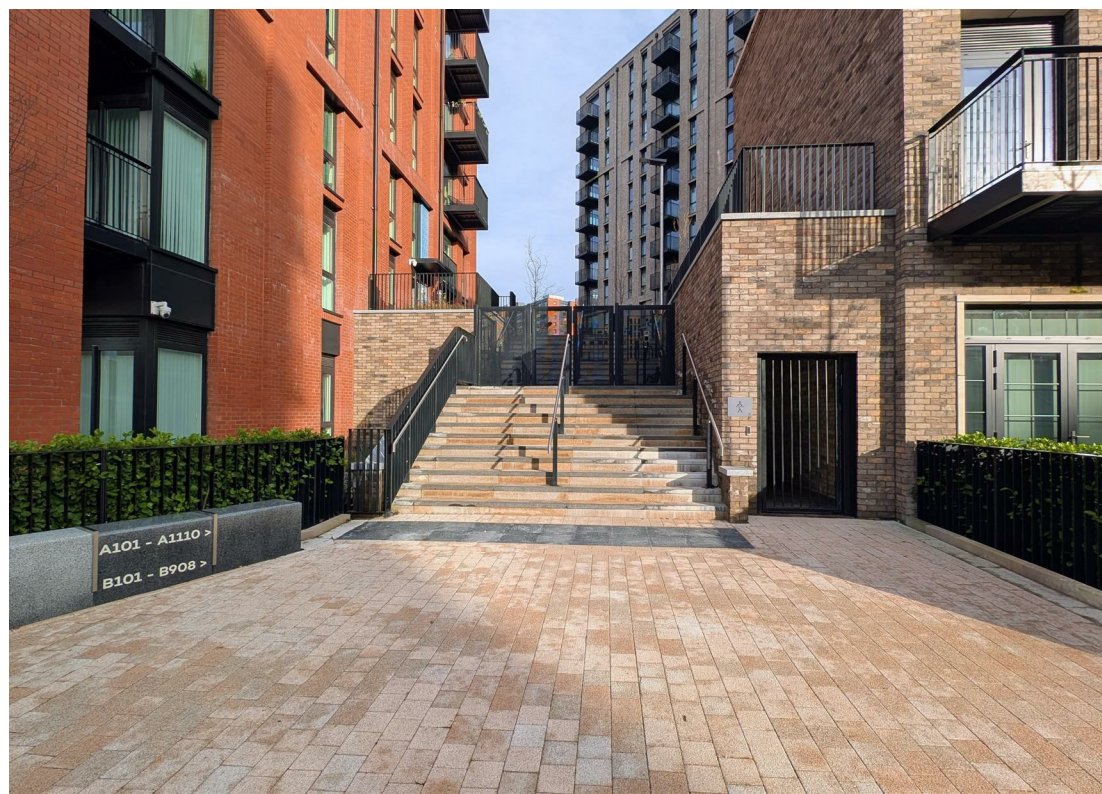
This brand new three-bedroom, two-bathroom apartment has been carefully designed to a high standard throughout. Features include a sleek, fully integrated kitchen, modern bathrooms, double-glazed windows, and access to a secure parcel delivery system and co-working space.

Located within a lively canalside setting with landscaped green spaces, the apartment offers modern living in a highly desirable location.

Contact our rentals team on 0161 837 2840 to register your interest and be among the first to secure a home within this exciting new development.

- Limited-Time Offer - Enjoy one month rent free on this unit for reservations until the end of April!
- Three Double Bedroom, Two Bathroom With A Spacious Balcony
- Furnished And Unfurnished Option Available
- Canalside Neighbourhood
- Available Immediately
- EPC Rating B
- Secure Parcel System
- 10 Minute Walk Into Manchester City Centre
- Brand New Apartment
- 6 Months Free Hyperoptic WiFi Included





Floor Plan



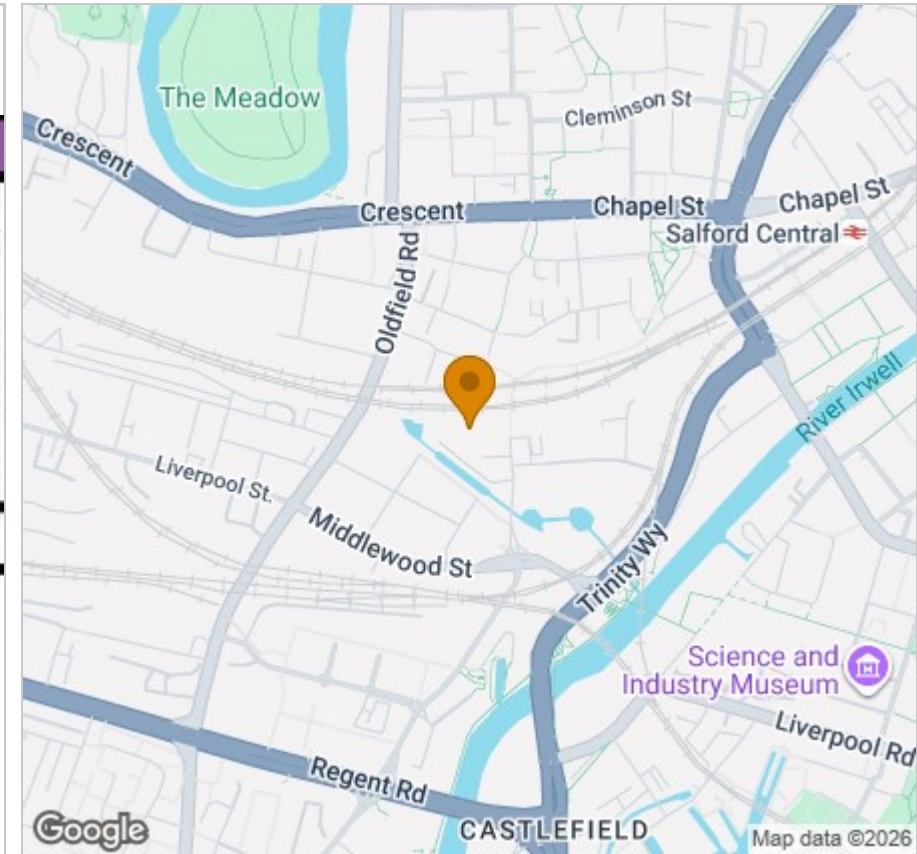
Viewing

Please contact our Reside Manchester Office on 0161 837 2840 if you wish to arrange a viewing appointment for this property or require further information.

These particulars, whilst believed to be accurate are set out as a general outline only for guidance and do not constitute any part of an offer or contract. Intending purchasers should not rely on them as statements of representation of fact, but must satisfy themselves by inspection or otherwise as to their accuracy. No person in this firm's employment has the authority to make or give any representation or warranty in respect of the property.

Upper Ground, 4 Jordan Street, Manchester, Greater Manchester, M15 4PY
 Tel: 0161 837 2840 Email: info@residemanchester.com www.reside-property.com

Area Map



Energy Efficiency Graph

