



Lower Peover

Foxcovert South Cottage, Foxcovert Lane





Lower Peover, WA16 9QP

Foxcovert Lane

£795,000



The Property

This beautifully presented, Grade II listed timber framed cottage has been sympathetically maintained and refurbished over the years by the current owners to now provide light, spacious and flexible living accommodation blending character features and modern convenience effortlessly. Particular mention must be made of the breakfast kitchen with island unit, stone worktops and bi fold doors to the patio, the principal bedroom suite with fitted wardrobes, dressing area and en-suite bathroom as well as the fantastic character features found throughout including thatched roof, exposed timber frame and stone fireplace. There has also recently been the addition of the detached timber lodge offering a multitude of opportunities with fantastic open plan living for dependent relatives, older children or as a home office.

Located in a charming position in a very secluded spot on one of the area's most sought after roads with stunning views to the rear over adjoining countryside, close to The Bells of Peover Public House and Lower Peover Primary School whilst being ideally positioned for all major network links to the Northwest and beyond.

The property is approached over a sweeping gravel driveway, providing ample off-road parking, leading to the detached timber lodge and along a stone and cobbled pathway to the property. The front gardens are lawned in the main with mature trees and hedging giving a high degree of privacy, retained by post and rail fencing. The rear gardens are a lovely feature of the property, being of generous proportions with a private, open aspect enjoying stunning views over adjoining countryside. Laid to lawn with borders surrounding and features trees, fully enclosed by mature hedging and fencing. Stone flagged patio area, accessed off the main reception rooms and breakfast kitchen provides ideal opportunity for alfresco dining and enjoying the lovely outlook.

Directions

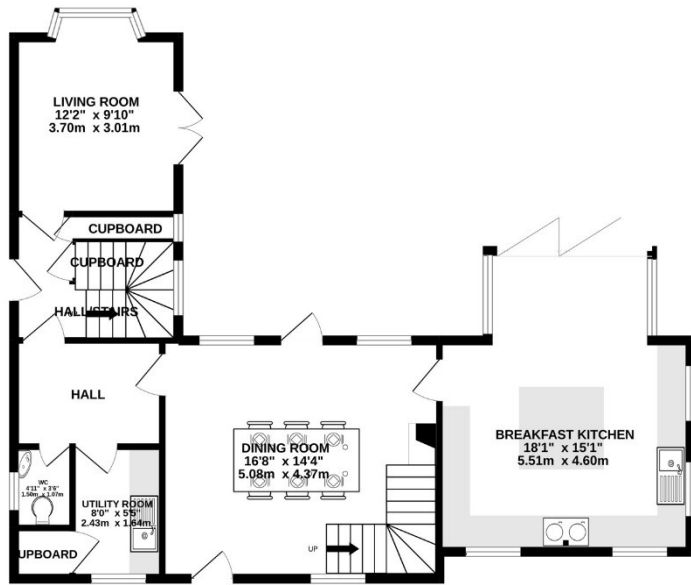
From Knutsford Town Centre proceed along Toft Road (A50) and turn right into Middlewich Road (B5081) passing through Lower Peover village and The Crown public house. Turn left into Foxcovert Lane and next right and the property will be seen at the end of the private driveway.

- A beautifully presented Grade II listed Cottage with detached Timber Lodge
- Set in a stunning position overlooking open countryside
- Lovely character features throughout
- Flexible living space
- Fitted breakfast kitchen opening onto the garden
- Three generous bedrooms
- Two bathrooms
- Private driveway & ample off-road parking

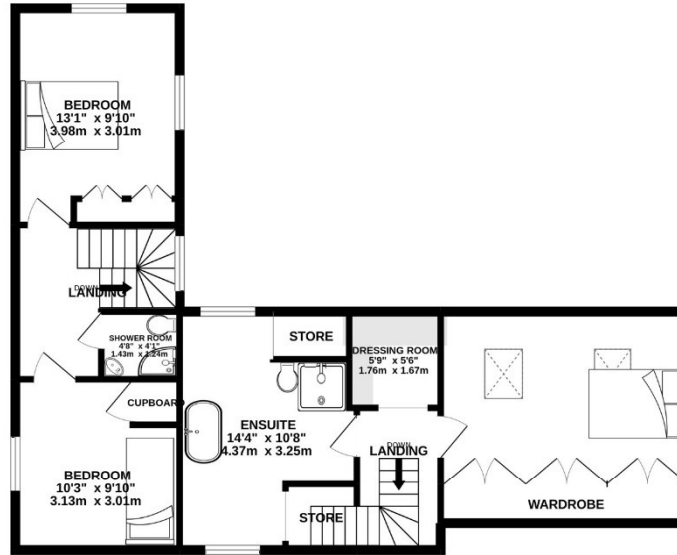
Postcode – WA16 9QP
Tenure – Freehold
Local Authority – Cheshire West
Council Tax – Band G
EPC Rating – TBC



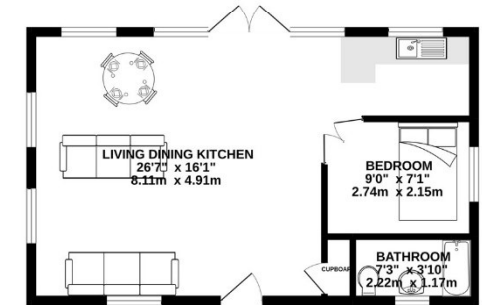
GROUND FLOOR
792 sq.ft. (73.6 sq.m.) approx.



1ST FLOOR
738 sq.ft. (68.6 sq.m.) approx.



DETACHED LODGE
429 sq.ft. (39.8 sq.m.) approx.



TOTAL FLOOR AREA : 1959 sq.ft. (182.0 sq.m.) approx.

Whilst every attempt has been made to ensure the accuracy of the floorplan contained here, measurements of doors, windows, rooms and any other items are approximate and no responsibility is taken for any error, omission or mis-statement. This plan is for illustrative purposes only and should be used as such by any prospective purchaser. The services, systems and appliances shown have not been tested and no guarantee as to their operability or efficiency can be given.
Made with Metropix ©2022

103 King Street, Knutsford, Cheshire, WA16 6EQ

01565 654 000

E: info@irlamsestateagents.co.uk

www.irlamsestateagents.co.uk

I1021_ Printed by Ravensworth 01670 713330

Irlams (Estate Agents) Ltd for themselves and for the vendors or lessors of this property whose agents they are give notice that:

- (a) The particulars are set out as a general outline only for the guidance of intending purchasers or lessees, and do not constitute, nor constitute part of, an offer or contract;
- (b) All descriptions, dimensions, references to condition and necessary permissions for use and occupation, and other details are given in good faith and are believed to be correct but any intending purchasers or lessees should not rely on them as statements or representations of fact, but must satisfy themselves by inspection or otherwise as to the correctness of each of them;
- (c) No person in the employment of Irlams (Estate Agents) Ltd has any authority to make or give any representation or warranty whatsoever in relation to this property.

