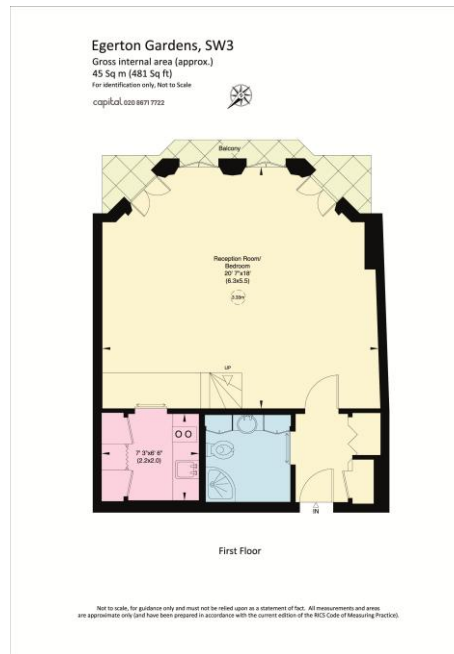




## Egerton Gardens

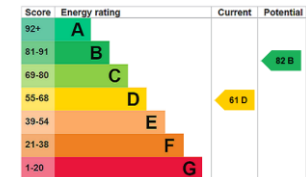
An exquisite first floor flat with balcony, situated at the rear of this attractive period building and offering wonderful open views of this exclusive garden square in Knightsbridge.

**CHESTERTONS**



**Tenure:** Leasehold 169 years 5 months  
**Service Charge:** £4,225.72 per annum  
**Ground Rent:** Peppercorn  
**Local Authority:** Kensington and Chelsea  
**Council Tax Band:** F

Asking Price £695,000



### Chestertons Knightsbridge & Belgravia Sales

31 Lowndes St  
 Knightsbridge  
 London  
 SW1X 9HX  
 knightsbridge@chestertons.co.uk  
 020 7235 8090  
 chestertons.co.uk

Chesterton UK Services Limited trading as Chestertons for themselves and for the vendor of this property whose agents they are, give notice that (i) these particulars do not constitute any part of an offer or contract, (ii) all statements contained within these particulars are made without responsibility on the part of Chestertons or the vendor, (iii) whilst made in good faith, none of the statements contained within these particulars are to be relied upon as a statement or representation of fact, (iv) any intending purchasers must satisfy themselves by inspection or otherwise as to the correctness of each of the statements contained within these particulars, (v) the vendor does not make or give either Chestertons or any person in their employment any authority to make or give representation or warranty whatsoever in relation to this property. Wide angle lenses may be used. ©Copyright Chestertons | Chesterton UK Services Limited | Registered Office 40 Connaught Street, Hyde Park, London W2 2AB Registered Company Number 05334580.



This paper is  
 100% recyclable