



Compton Close, NW11

£807 Per week

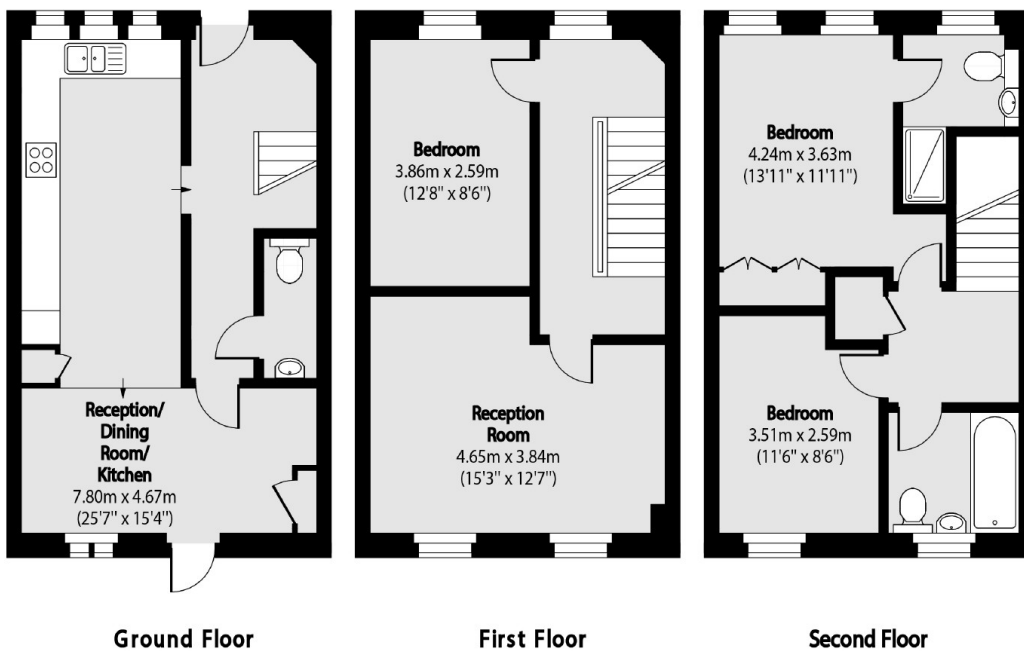
This newly refurbished three bedroom townhouse, spread over three floors is situated in the Golders Green Estate. The house has a modern integrated family kitchen, a bright reception room, a spacious primary bedroom with good storage, an en-suite bathroom and a private garden.

Compton Close is well located close to Cricklewood Station (Thameslink), Cricklewood Broadway, with a range of local amenities, restaurants, cafés, Brent Cross, and excellent transport and motorway links.

Features

- Three Bedrooms
- Spacious Reception
- Two Bathrooms
- Family Kitchen
- Private Garden
- Off Street Parking

Compton Close, London, NW11



Total area (approx): 109.44 sq m (1178 sq. ft)