



## 15 Jasmine Way, Carterton

Guide Price £275,000



## 15 Jasmine Way

Brought to market with no onward chain is this delightful two-bedroom terraced home located on the ever-popular Shilton Park development.

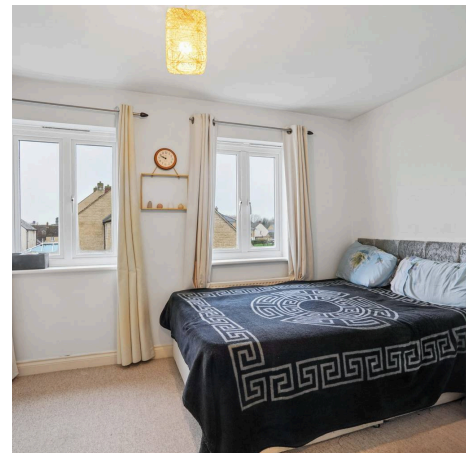
Council Tax band: C

Tenure: Freehold

EPC Energy Efficiency Rating: C

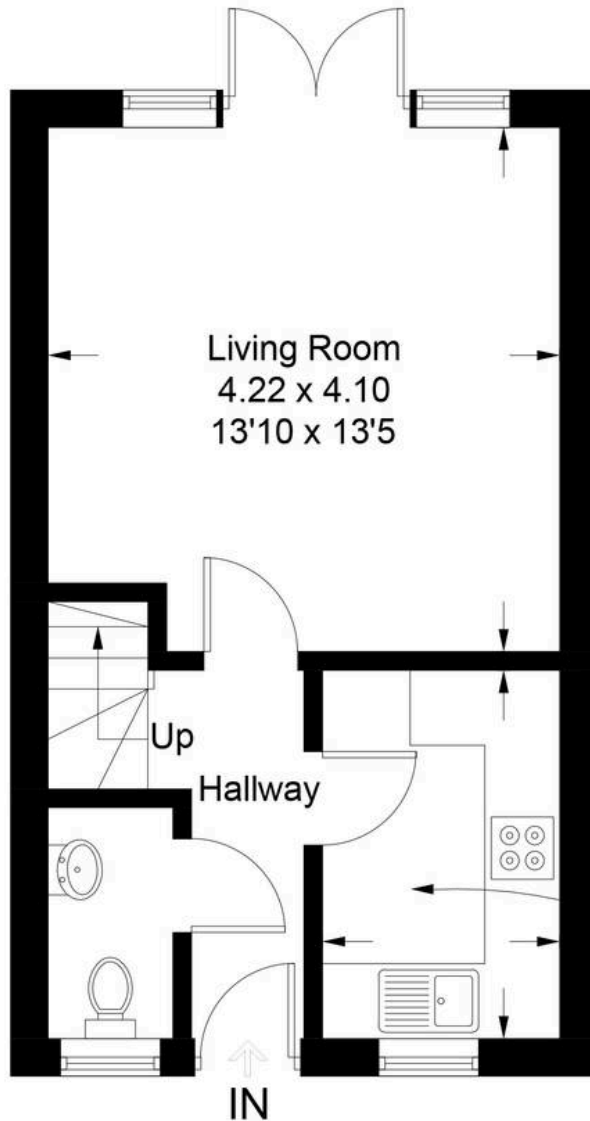
EPC Environmental Impact Rating: C

- Brought to market with no onward chain.
- A neatly presented two-bedroom terraced home located on the ever-popular Shilton Park development.
- Garage and off-street parking.
- Two double bedrooms, both with built-in storage.
- Landscaped westerly-facing rear garden.
- Open plan sitting/dining room.



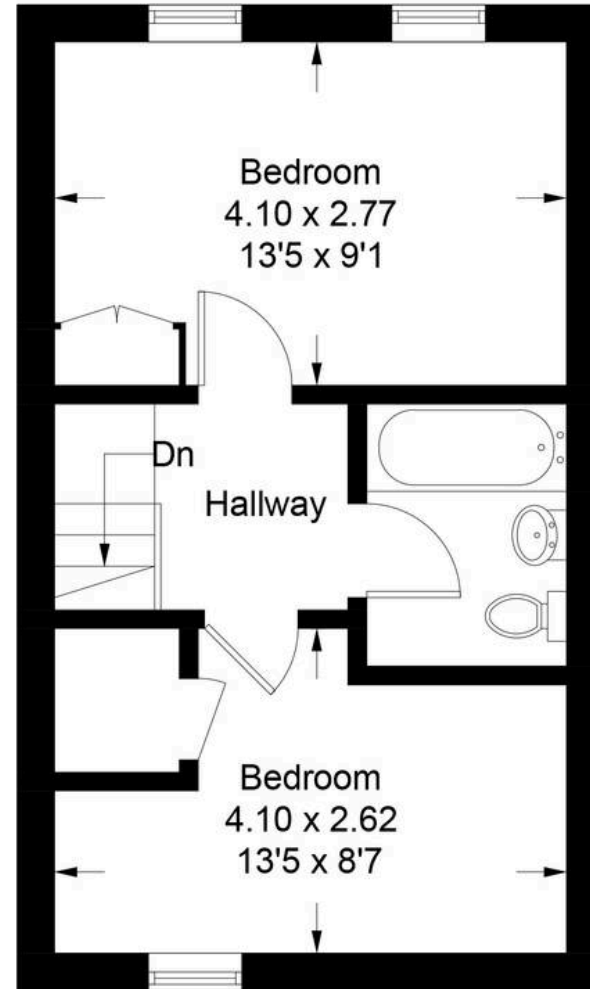
# Jasmine Way - Carterton

Approximate Gross Internal Area = 60.2 sq m / 648 sq ft



**Ground Floor**

Kitchen  
2.97 x 1.88  
9'9 x 6'2



**First Floor**

Illustration for identification purposes only, measurements are approximate, not to scale. Fourlabs.co © (ID1279668)



## Simpsons Witney Branch

4 Langdale Court Witney, Oxfordshire - OX28 6AD

01993 835030 • [witney@simpsonsproperty.com](mailto:witney@simpsonsproperty.com) • [www.simpsonsproperty.com/](http://www.simpsonsproperty.com/)